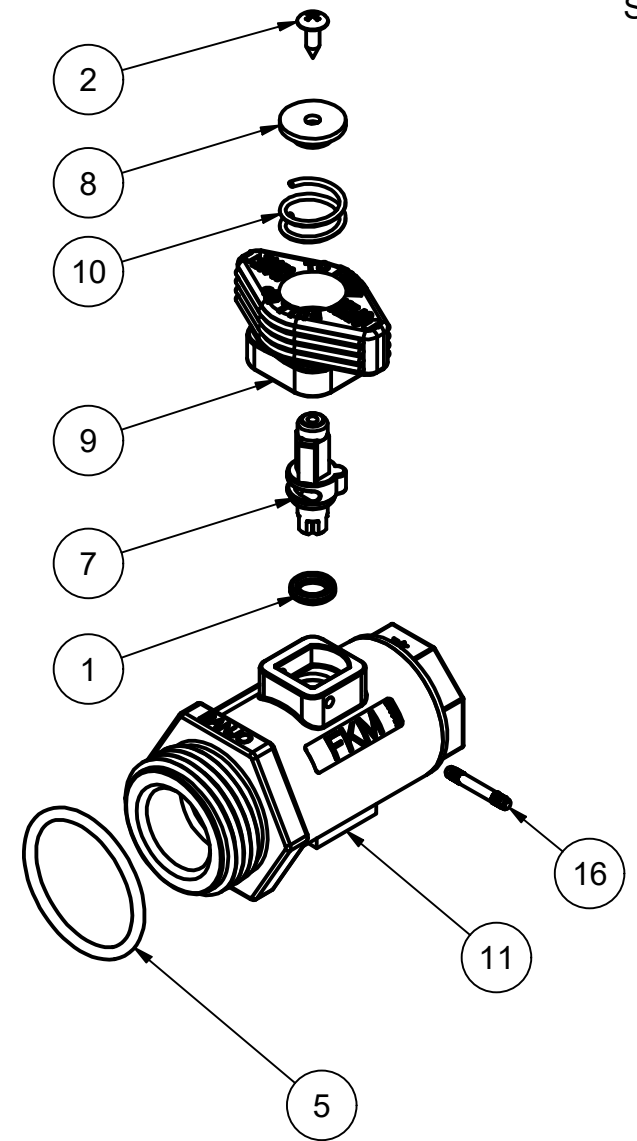
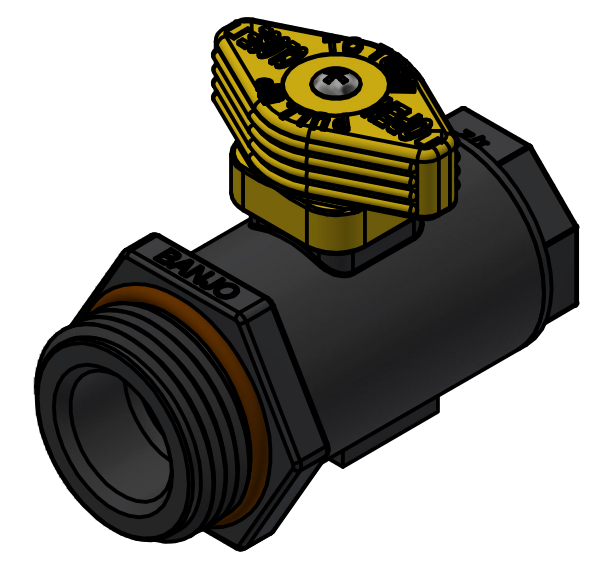


PARTS LIST			
ITEM	QTY	PART NUMBER	DESCRIPTION
1	1	AQ010V	-010 Quad-Ring FKM
2	1	B0424038T	#4 x 3/8" Cross Recessed Truss Head Tapping Screw - Type AB - Type II
5	1	LSQ200-RV	AS568A -123 O-RING, FKM, BROWN
7	1	LV02151	3/8" MICRO-VALVE PINNED STEM
8	1	LV02153C	3/8" MICRO VALVE HANDLE CAP
9	1	LV02153L	3/8" MICRO VALVE HANDLE
10	1	LV02153S	Compression Spring
11	1	LV05254A	1/2" MICRO-VALVE BODY, MOLDED
16	1	WS10002	STEM RETAINING PIN, PLATED STEEL



NOTE: PULL UP ON HANDLE TO TURN.



THIS DRAWING AND ALL INFORMATION CONTAINED THEREON ARE THE EXCLUSIVE PROPERTY OF BANJO CORPORATION.

UNLESS SPECIFICALLY NOTED, THIS DRAWING AND ITEMS SHOWN ON THIS DRAWING ARE SUBJECT TO CHANGE AT ANY TIME.



BANJO CORPORATION

150 BANJO DRIVE, CRAWFORDSVILLE, IN 47933
 WEB SITE: WWW.BANJOCORP.COM
 E-MAIL: BANJOSALES@IDEXCORP.COM

DESCRIPTION
 1/2" FNPT X 1" MNPT MICRO-VALVE LOCK HANDLE

PART NUMBER
 LV050100MTLV