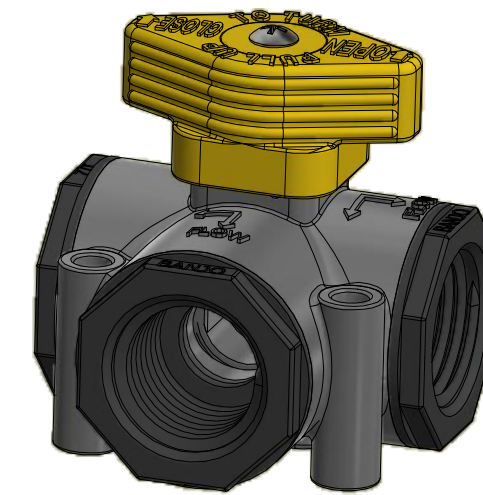
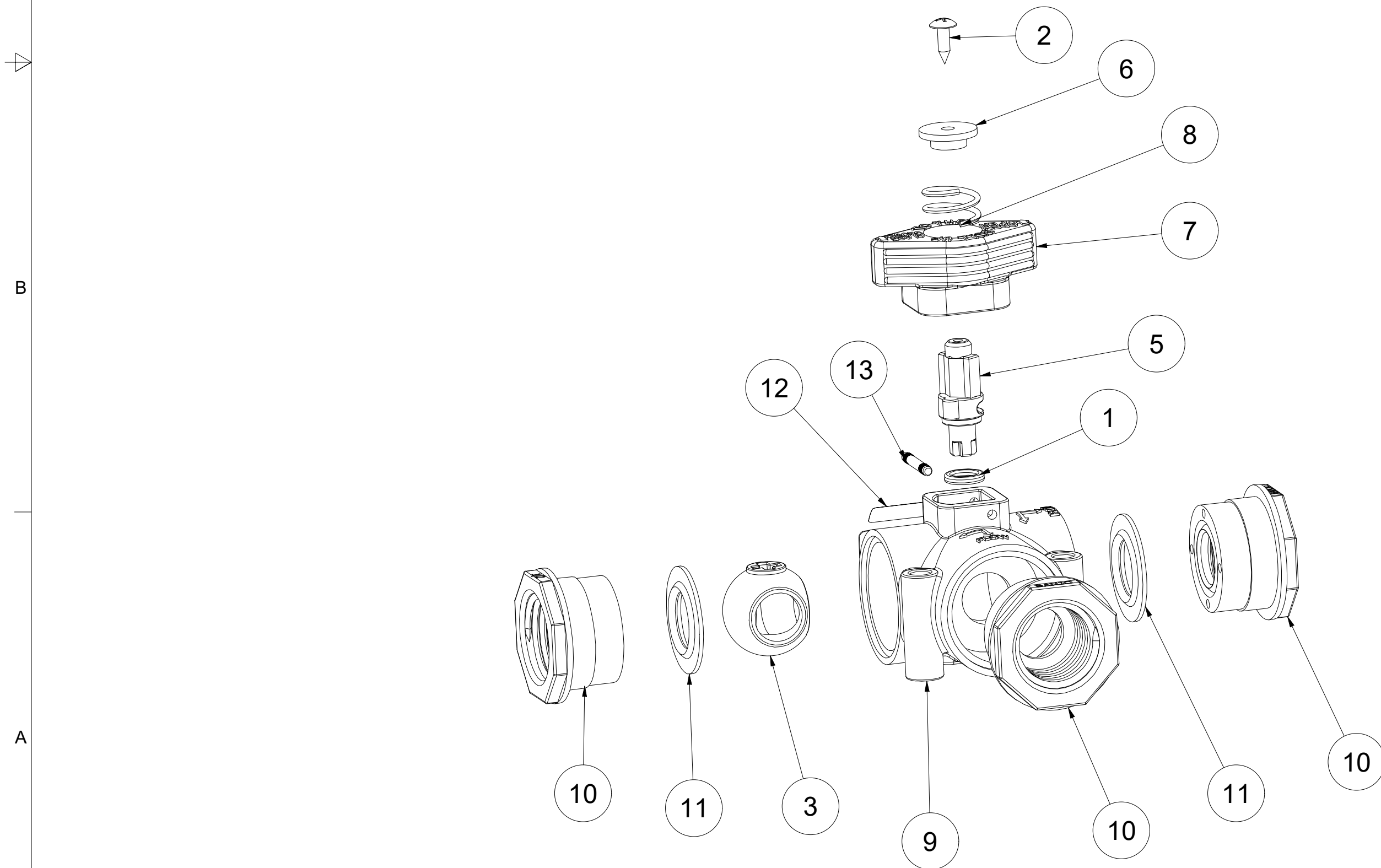


Parts List			
ITEM	QTY	PART NUMBER	DESCRIPTION
1	1	AQ010V	-010 Quad-Ring FKM
2	1	B0424038T	#4 x 3/8" Cross Recessed Truss Head Tapping Screw - Type AB - Type II
3	1	LEV05255S	1/2" MV SIDE LOAD BALL
4	1	LST1300D	300 PSI DECAL
5	1	LV02151	MICRO-VALVE STEM
6	1	LV02153C	LV HANDLE CAP
7	1	LV02153L	MICRO-VALVE HANDLE
8	1	LV02153S	Compression Spring
9	1	LV05254AS	1/2" SIDE LOAD MV BODY
10	3	LV05256	1/2" NPT ENDPLATE
11	2	LV05258V	1/2" MICRO-VALVE SEAT
12	1	VL1005	FKM LABEL
13	1	WS10002	Weld Valve Retaining Pin



THIS DRAWING AND ALL INFORMATION CONTAINED THEREON ARE THE EXCLUSIVE PROPERTY OF BANJO CORPORATION. UNLESS SPECIFICALLY NOTED, THIS DRAWING AND ITEMS SHOWN ON THIS DRAWING ARE SUBJECT TO CHANGE AT ANY TIME.

BANJO CORPORATION
 150 BANJO DRIVE, CRAWFORDSVILLE, IN 47933
 WEB SITE: WWW.BANJOCORP.COM
 E-MAIL: SALES1@BANJOCORP.COM

DESCRIPTION
 1/2" FNPT SIDE LD VLV, FKM LCK HDL
 PART NUMBER
 LV050SLLV