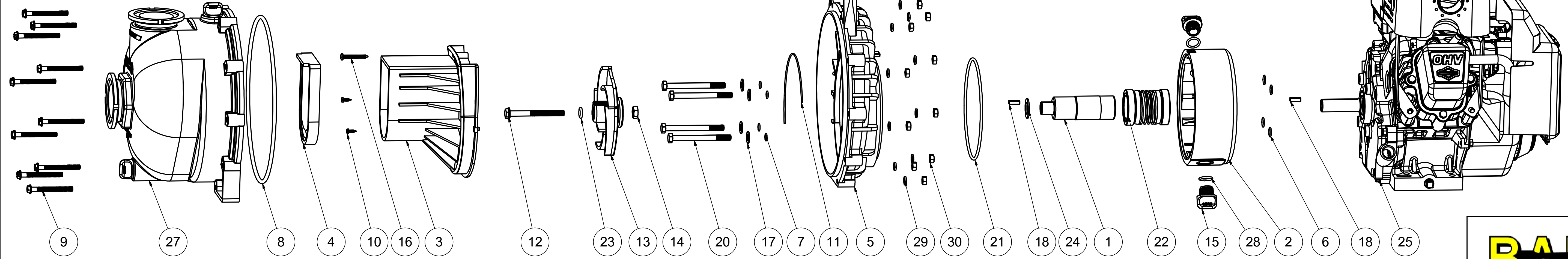


Parts List			
ITEM	QTY	PART NUMBER	DESCRIPTION
1	1	12155	ADAPTER SHAFT
2	1	12202W	2" POLY RESERVOIR
3	1	12702A	2" POLY PUMP VOLUTE
4	1	12705	PUMP CHECKVALVE, EPDM
5	1	12707W	2" W.S. REAR BRACKET
6	4	12709	#13 O-RING, EPDM
7	4	12717	#11 O-RING, EPDM
8	1	12719A	#375 O-RING, EPDM
9	10	12720	1/4-20 X 2 1/2" SL IND HWHS
10	2	12725	#6 X 1/2" PPH SMS
11	1	12754	O-RING SEGMENT
12	1	12766	5/16-24 X 3 1/4" HFS
13	1	12772	IMPELLER
14	1	12775A	7/16-14 HEX NUT
15	2	12777	1/2" DRAIN PLUG
16	1	12900	#10 X 1 1/2" PPH SMS
17	4	12901	5/16" FLAT WASHER
18	2	12902A	3/16" SQ. X 5/8" KEY
19	1	12910	DECAL (N/S)
20	4	13034	5/16-24 X 3 1/2" HHCS
21	1	13719	#256 O-RING, EPDM
22	1	15035E	MECH. SEAL ASSY, EPDM
23	1	A204	#204 O-RING, EPDM
24	1	CV10175	GASKET, EPDM
25	1	E6.5PRO	6.5 HP B&S ENGINE
26	1	KK-57	WARNING TAG (N/S)
27	1	M12712	2" FP MNFLD PUMP BODY ASSY
28	2	UV15163	#114 O-RING, EPDM
29	10	V07018	1/4" LOCKWASHER
30	10	V07019	1/4-20 HEX NUT



BANJO CORPORATION
 150 BANJO DRIVE, CRAWFORDSVILLE, IN 47933
 WEB SITE: WWW.BANJOCORP.COM
 E-MAIL: SALES1@BANJOCORP.COM

THIS DRAWING AND ALL INFORMATION CONTAINED THEREON ARE THE EXCLUSIVE PROPERTY OF BANJO CORPORATION.

UNLESS SPECIFICALLY NOTED, THIS DRAWING AND ITEMS SHOWN ON THIS DRAWING ARE SUBJECT TO CHANGE AT ANY TIME.

DESCRIPTION
2" POLY WET SEAL PUMP

PART NUMBER
M220P6PROW