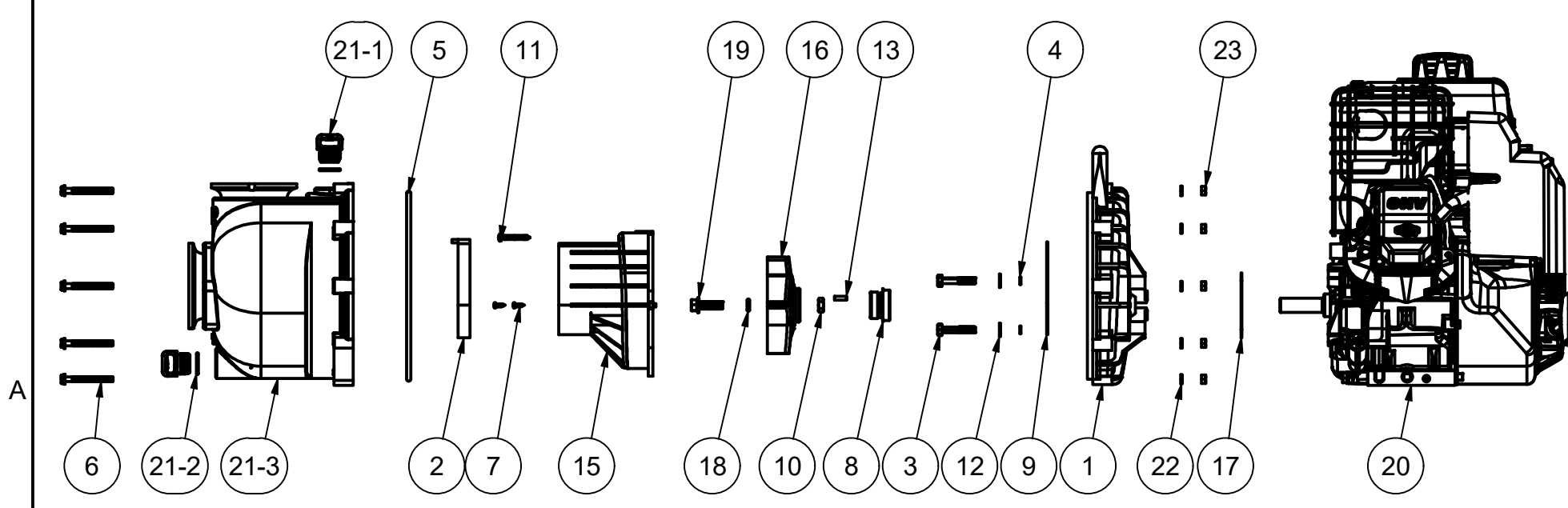



PARTS LIST			
ITEM	QTY	PART NUMBER	DESCRIPTION
1	1	12703A	POLY PUMP REAR BRACKET
2	1	12705	PUMP CHECKVALVE, EPDM
3	4	12715A	5/16-24 X 1 3/4" HHCS WITH TORQ-PATCH
4	4	12717	AS568A -011 O-RING, EPDM
5	1	12719A	AS568A -375 O-RING, EPDM, BLACK
6	10	12720	1/4-20 X 2 1/2" SL IND HWHS
7	2	12725	#6 X 1/2" PPH SMS
8	1	12733	MECHANICAL SEAL ASSY
9	1	12754	O-RING SEGMENT
10	1	12775A	7/16-14 HEX NUT
11	1	12900	#10 X 1 1/2" PPH SMS
12	4	12901	5/16" FLAT WASHER
13	1	12902A	3/16" SQ. X 5/8" KEY
14	1	12910	PUMP DECAL (N/S)
15	1	13702	3" POLY PUMP VOLUTE
16	1	13772	3" POLY PUMP IMPELLER
17	1	15751	REAR BRACKET SHIM
18	1	A204	AS568A -204 O-RING, EPDM, BLACK
19	1	B038125F	3/8-24 X 1 1/4" HFS
20	1	E11PROE	11 HP B&S, Ø3/4" SHAFT, ELEC. START
21	1	M13712	3" MNFLD POLY PUMP BODY ASSY.
21-1	2	13777	3/4" DRAIN PLUG
21-2	2	13778	AS568A -119 O-RING, EPDM, BLACK
21-3	1	M13712Y	3" MNFLD POLY PUMP BODY ASSY.
22	10	V07018	1/4" LOCKWASHER
23	10	V07019	1/4-20 HEX NUT



THIS DRAWING AND ALL INFORMATION CONTAINED THEREON ARE THE EXCLUSIVE PROPERTY OF BANJO CORPORATION.

UNLESS SPECIFICALLY NOTED, THIS DRAWING AND ITEMS SHOWN ON THIS DRAWING ARE SUBJECT TO CHANGE AT ANY TIME.



**BANJO CORPORATION**

150 BANJO DRIVE, CRAWFORDSVILLE, IN 47933  
 WEB SITE: WWW.BANJOCORP.COM  
 E-MAIL: BANJOSALES@IDEXCORP.COM

DESCRIPTION  
**3" POLY PUMP W/ 11HP B&S**

PART NUMBER  
**M300P11PRO**