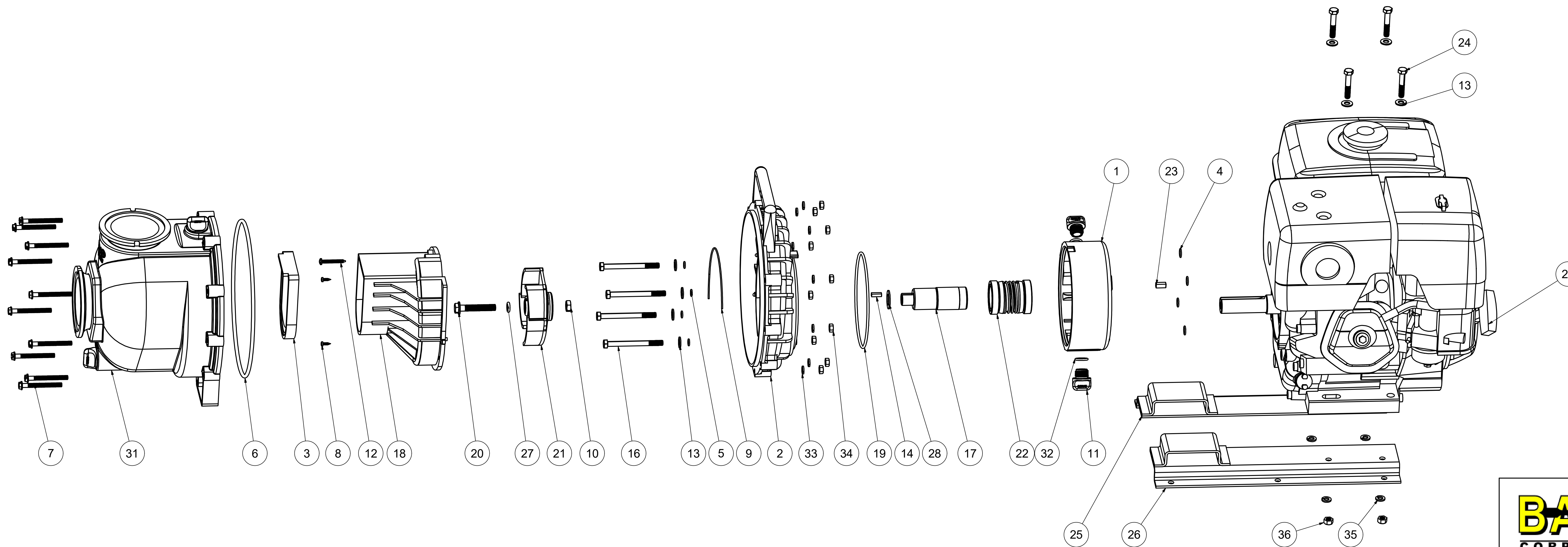


Parts List			
ITEM	QTY	PART NUMBER	DESCRIPTION
1	1	12201W	3" WET SEAL RESERVOIR
2	1	12703AW	3" W.S. REAR BRACKET
3	1	12705	PUMP CHECKVALVE, EPDM
4	4	12709	MOTOR MT O'RING
5	4	12717	O'RING FOR BRKT SCREW
6	1	12719A	PUMP BODY O'RING
7	10	12720	1/4-20 X 2 1/2" SCREW
8	2	12725	#6 X 1/2" PPH SMS
9	1	12754	O'RING SEGMENT
10	1	12775A	7/16-14 HEX NUT
11	2	12777	1/2" DRAIN PLUG
12	1	12900	#10 X 1 1/2" PPH SMS
13	8	12901	5/16" FLAT WASHER
14	1	12902A	3/16" SQ. X 5/8" KEY
15	1	12910	PUMP DECAL (N/S)
16	4	13034	5/16-24 X 3 1/2" HHCS
17	1	13055	ADAPTER SHAFT
18	1	13702	3" POLY PUMP VOLUTE
19	1	13719	RESERVOIR O'RING
20	1	13766	3/8-24 X 2 1/4" HFS
21	1	13772	3" POLY PUMP IMPELLER
22	1	15035	MECH. SEAL ASSY, FKM
23	1	16901	1/4" SQ. X 3/4" KEY
24	4	17029	5/16-18 X 1.75" HHCS
25	1	18135A	Z-RAIL
26	1	18135B	Z-RAIL
27	1	A204	#204 O'RING, EPDM
28	1	CV10175	GASKET, EPDM
29	1	E13H	13 HP HONDA ENGINE
30	1	KK-57	WARNING TAG (N/S)
31	1	M13712	3" MNFLD POLY PUMP BODY ASSY.
32	2	UV15163	#114 O'RING, EPDM
33	10	V07018	1/4" LOCKWASHER
34	10	V07019	1/4-20 HEX NUT
35	4	V10118	5/16" LOCKWASHER
36	4	V10119	5/16" HEX NUT



THIS DRAWING AND ALL INFORMATION CONTAINED THEREON ARE THE EXCLUSIVE PROPERTY OF BANJO CORPORATION.

UNLESS SPECIFICALLY NOTED, THIS DRAWING AND ITEMS SHOWN ON THIS DRAWING ARE SUBJECT TO CHANGE AT ANY TIME.

BANJO CORPORATION
 150 BANJO DRIVE, CRAWFORDSVILLE, IN 47933
 WEB SITE: WWW.BANJOCORP.COM
 E-MAIL: SALES1@BANJOCORP.COM

DESCRIPTION
3" POLY WET SEAL PUMP W/ 13 HP HONDA

PART NUMBER
M300PH13W