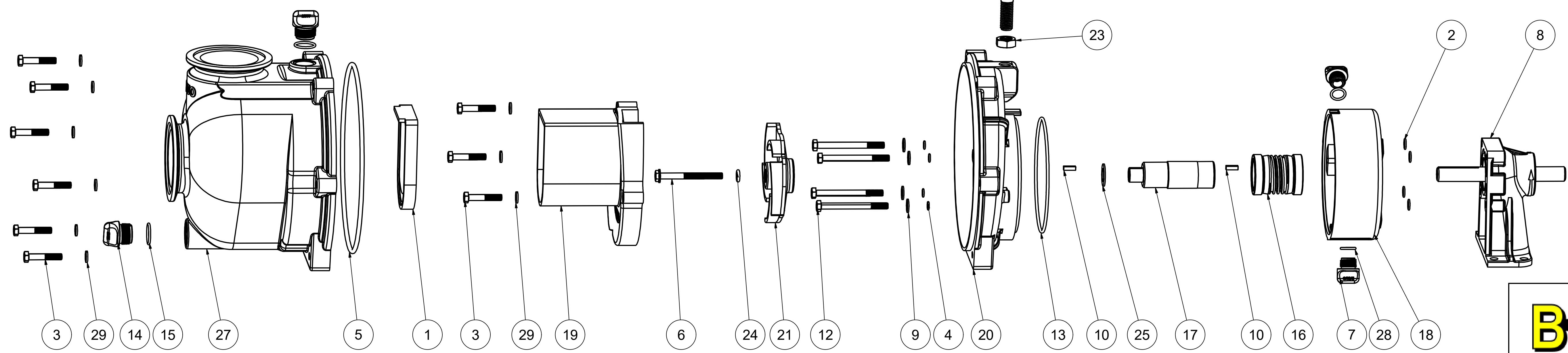


Parts List			
ITEM	QTY	PART NUMBER	DESCRIPTION
1	1	12705	PUMP CHECKVALVE, EPDM
2	4	12709	#13 O-RING, EPDM
3	9	12715A	5/16-24 X 1 3/4" HHCS WITH TORQ-PATCH
4	4	12717	#11 O-RING, EPDM
5	1	12719A	#375 O-RING, EPDM
6	1	12766	5/16-24 X 3 1/4" HFS
7	2	12777	1/2" DRAIN PLUG
8	1	12882A	BEARING PEDESTAL
9	4	12901	5/16" FLAT WASHER
10	2	12902A	3/16" SQ. X 5/8" KEY
11	1	12910	DECAL (N/S)
12	4	13034	5/16-24 X 3 1/2" HHCS
13	1	13719	#256 O-RING, EPDM
14	2	13777	3/4" DRAIN PLUG
15	2	13778	#119 O-RING, EPDM
16	1	15035E	MECH. SEAL ASSY, EPDM
17	1	15055	ADAPTER SHAFT
18	1	15201W	2" WET SEAL RESERVOIR
19	1	15702A	CI PUMP VOLUTE
20	1	15703W	REAR BRACKET
21	1	15772	5 VANE IMPELLER
22	1	18033	PUMP HANDLE
23	1	18034	5/8-11 JAM NUT
24	1	A204	#204 O-RING, EPDM
25	1	CV10175	GASKET
26	1	KK-57	WET SEAL WARNING TAG (N/S)
27	1	M19712X	3" CI MNFLD PUMP BODY
28	2	UV15163	#114 O-RING, EPDM
29	9	V10118	5/16" LOCKWASHER



BANJO CORPORATION
 150 BANJO DRIVE, CRAWFORDSVILLE, IN 47933
 WEB SITE: WWW.BANJOCORP.COM
 E-MAIL: SALES1@BANJOCORP.COM

THIS DRAWING AND ALL INFORMATION CONTAINED THEREON ARE THE EXCLUSIVE PROPERTY OF BANJO CORPORATION.
 UNLESS SPECIFICALLY NOTED, THIS DRAWING AND ITEMS SHOWN ON THIS DRAWING ARE SUBJECT TO CHANGE AT ANY TIME.

DESCRIPTION
3" CAST IRON WET SEAL PUMP W/ BEARING PED.
 PART NUMBER
M332PBIW