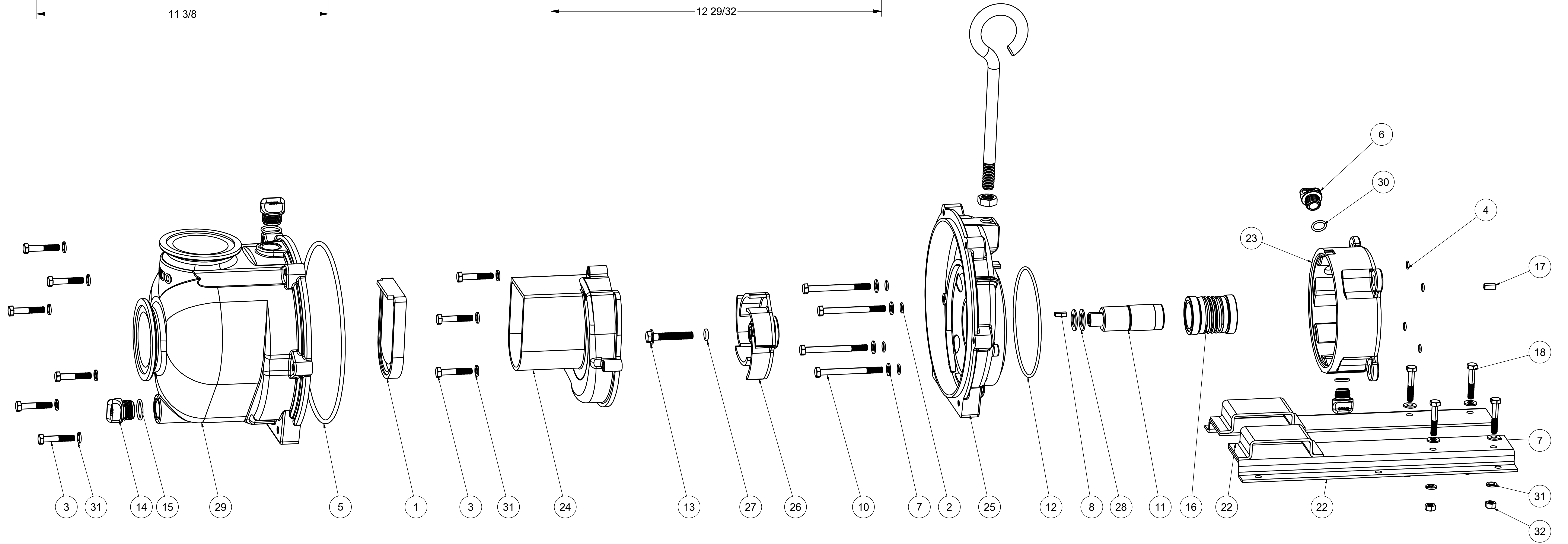


Parts List			
ITEM	QTY	PART NUMBER	DESCRIPTION
1	1	12705	PUMP CHECKVALVE, EPDM
2	4	12709	#13 O-RING, EPDM
3	9	12715A	5/16-24 X 1 3/4" HHCS WITH TORQ-PATCH
4	4	12717	#11 O'RING, EPDM
5	1	12719A	#375 O'RING, EPDM
6	2	12777	1/2" DRAIN PLUG
7	8	12901	5/16" FLAT WASHER
8	1	12902A	3/16" SQ. X 5/8" KEY
9	1	12910	DECAL (N/S)
10	4	13034	5/16-24 X 3 1/2" HHCS
11	1	13055	ADAPTER SHAFT
12	1	13719	#256 O'RING, EPDM
13	1	13766	3/8-24 X 2 1/4" HFS
14	2	13777	3/4" DRAIN PLUG
15	2	13778	#119 O'RING, EPDM
16	1	15035E	MECH. SEAL ASSY, EPDM
17	1	16901	1/4" SQ. X 3/4" KEY
18	4	17029	5/16-18 X 1.75" HHCS
19	1	18033	PUMP HANDLE
20	1	18034	5/8-11 JAM NUT
21	1	18135A	Z-RAIL
22	1	18135B	Z-RAIL
23	1	19201W	3" WET SEAL RESERVOIR
24	1	19702	3" CI PUMP VOLUTE
25	1	19703W	REAR BRACKET
26	1	19772SS	3" CI PUMP IMPELLER, 316 SS
27	1	A204	#204 O'RING, EPDM
28	2	CV10175	GASKET, EPDM
29	1	M19712X	3" CI MNFLD PUMP BODY
30	2	UV15163	#114 O'RING, EPDM
31	13	V10118	5/16" LOCKWASHER
32	4	V10119	5/16" HEX NUT



THIS DRAWING AND ALL INFORMATION CONTAINED THEREON ARE THE EXCLUSIVE PROPERTY OF BANJO CORPORATION.

BANJO CORPORATION
 150 BANJO DRIVE, CRAWFORDSVILLE, IN 47933
 WEB SITE: WWW.BANJOCORP.COM
 E-MAIL: SALES1@BANJOCORP.COM

UNLESS SPECIFICALLY NOTED, THIS DRAWING AND ITEMS SHOWN ON THIS DRAWING ARE SUBJECT TO CHANGE AT ANY TIME.

DESCRIPTION
3" CAST IRON WET SEAL PUMP
 PART NUMBER
M332POIW