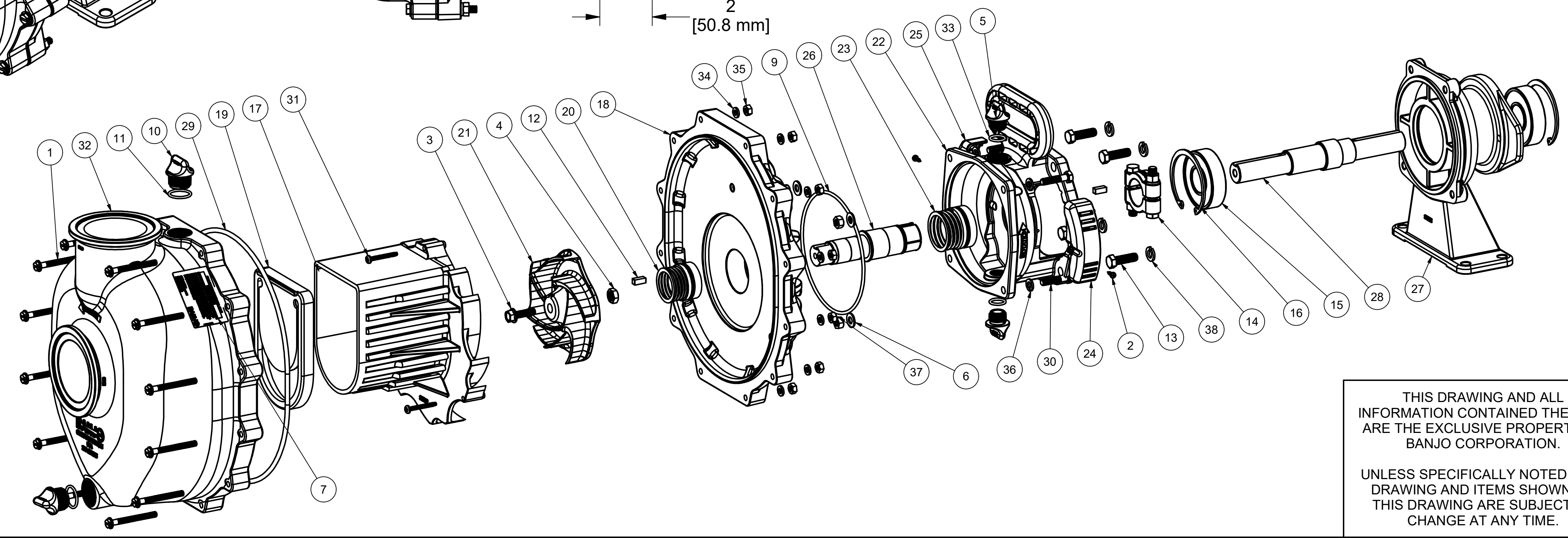
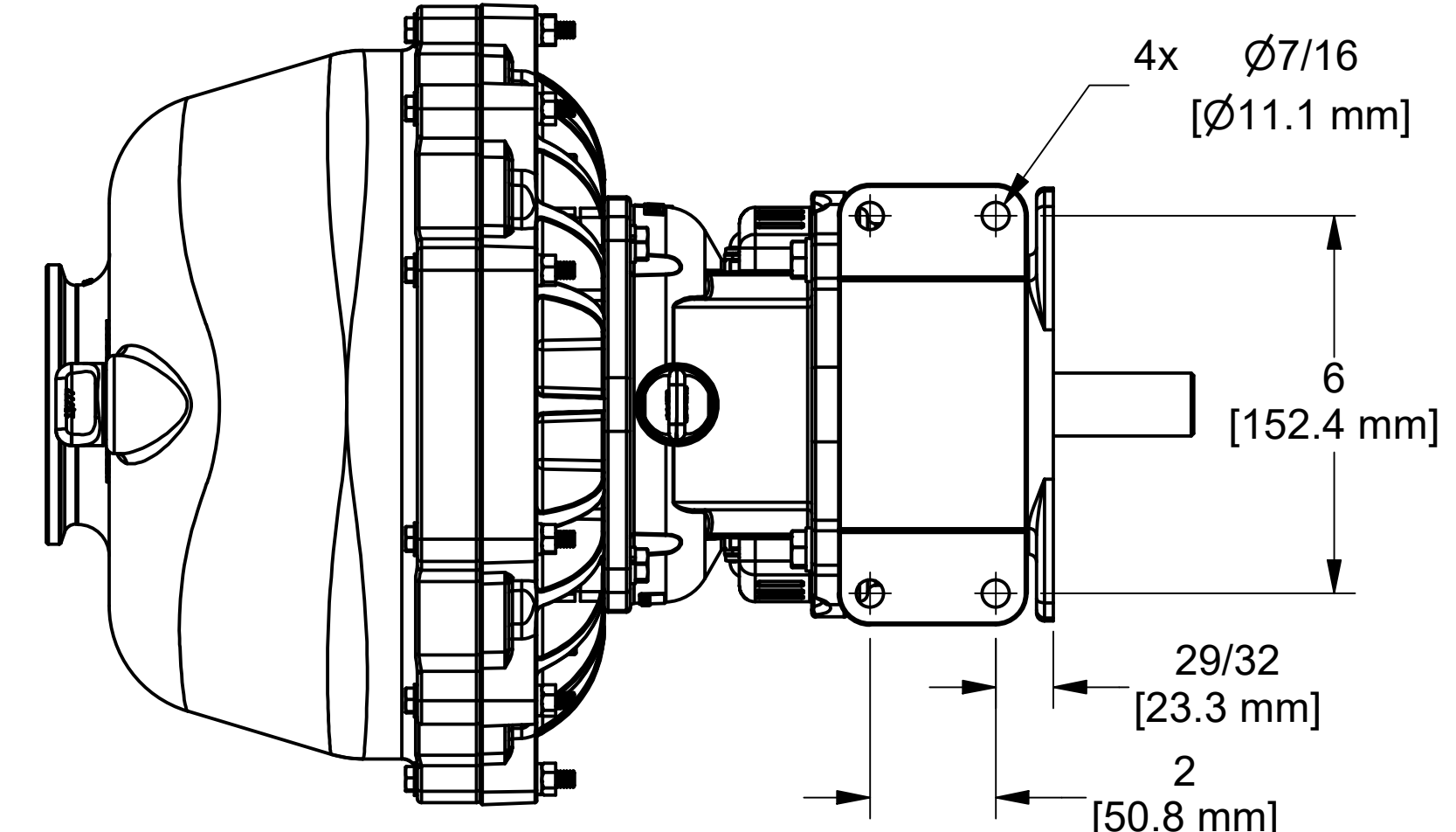
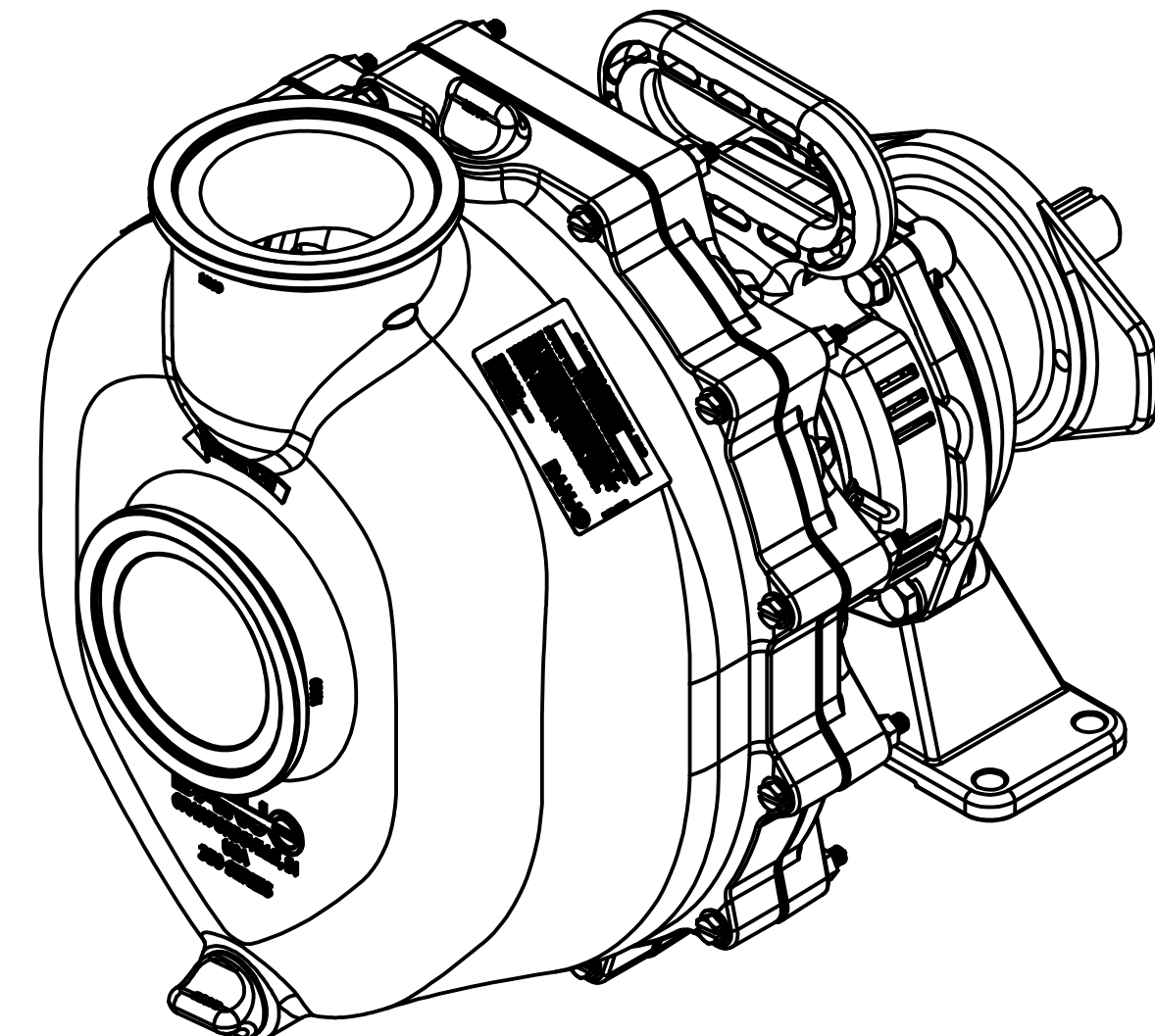


Parts List			
ITEM	QTY	PART NUMBER	DESCRIPTION
1	12	12720	1/4-20 X 2 1/2" SL IND HEX WASHER HEAD SCREW
2	2	12725	#6 X 1/2" PPH SMS
3	1	12765A	5/16-24 X 1 1/8" HFS
4	1	12775A	7/16-14 HEX NUT
5	2	12777	1/2" DRAIN PLUG
6	4	12901	5/16" FLAT WASHER
7	1	12910	PUMP WARNING LABEL
9	1	13719	AS568A -256 O-RING, EPDM, BLACK
10	2	13777	3/4" DRAIN PLUG, MOLDED
11	2	13778	AS568A -119 O-RING, EPDM, BLACK
12	2	16901SS	1/4" SQ. X 5/8" KEY 18-8 SS
13	4	17704	3/8-16 X 1 1/4" HHCS
14	1	18029	CLAMP
15	2	18502	BEARING PEDESTAL BEARING
16	2	18506	RETAINING RING
17	1	35002	M350 DIFFUSER
18	1	35004	M350 REAR BRACKET
19	1	35005	3" WET SEAL POLY PUMP CHECK VALVE
20	1	35113E	1.125" MECHANICAL SEAL, EPDM, BULK
21	1	35073	M350 5-VANE IMPELLER
22	1	35201	M350 WET SEAL RESERVOIR
23	1	35313E	1.375" MECHANICAL SEAL, EPDM, BULK
24	1	35246GL	LEFT SHAFT GUARD FOR M350P
25	1	35246GR	RIGHT SHAFT GUARD FOR M350P
26	1	35255	3" WET SEAL POLY PUMP SHAFT ADAPTER FOR E13H
27	1	35882	BEARING PEDESTAL HOUSING, SAE 2-BOLT "A"
28	1	35883A	BEARING PEDESTAL SHAFT, LONG COUPLE
29	1	A380E	AS568 #380 EPDM O-RING
30	4	B0516138	5/16-18 X 1 3/8" HHCS
31	3	B1014150TS	#10 X 1 1/2" THREAD FORMING SCREW, 18-8 SS
32	1	M35012	M350 MANIFOLD BODY
33	2	UV15163	AS568A -114 O-RING, EPDM, BLACK
34	12	V07018	1/4" LOCKWASHER
35	12	V07019	1/4"-20 S.S. HEX NUT
36	4	V10118	5/16" LOCKWASHER
37	4	V10119	5/16"-18 SS NUT
38	4	V20018	3/8" LOCKWASHER



THIS DRAWING AND ALL INFORMATION CONTAINED THEREON ARE THE EXCLUSIVE PROPERTY OF BANJO CORPORATION.

UNLESS SPECIFICALLY NOTED, THIS DRAWING AND ITEMS SHOWN ON THIS DRAWING ARE SUBJECT TO CHANGE AT ANY TIME.

BANJO CORPORATION
 A UNIT OF IDEX CORPORATION
 150 BANJO DRIVE, CRAWFORDSVILLE, IN 47933
 WEB SITE: WWW.BANJOCORP.COM
 E-MAIL: BANJOSALES@IDEXCORP.COM

DESCRIPTION:
3" WET SEAL POLY PUMP PEDESTAL

PART NUMBER:
M350PBW