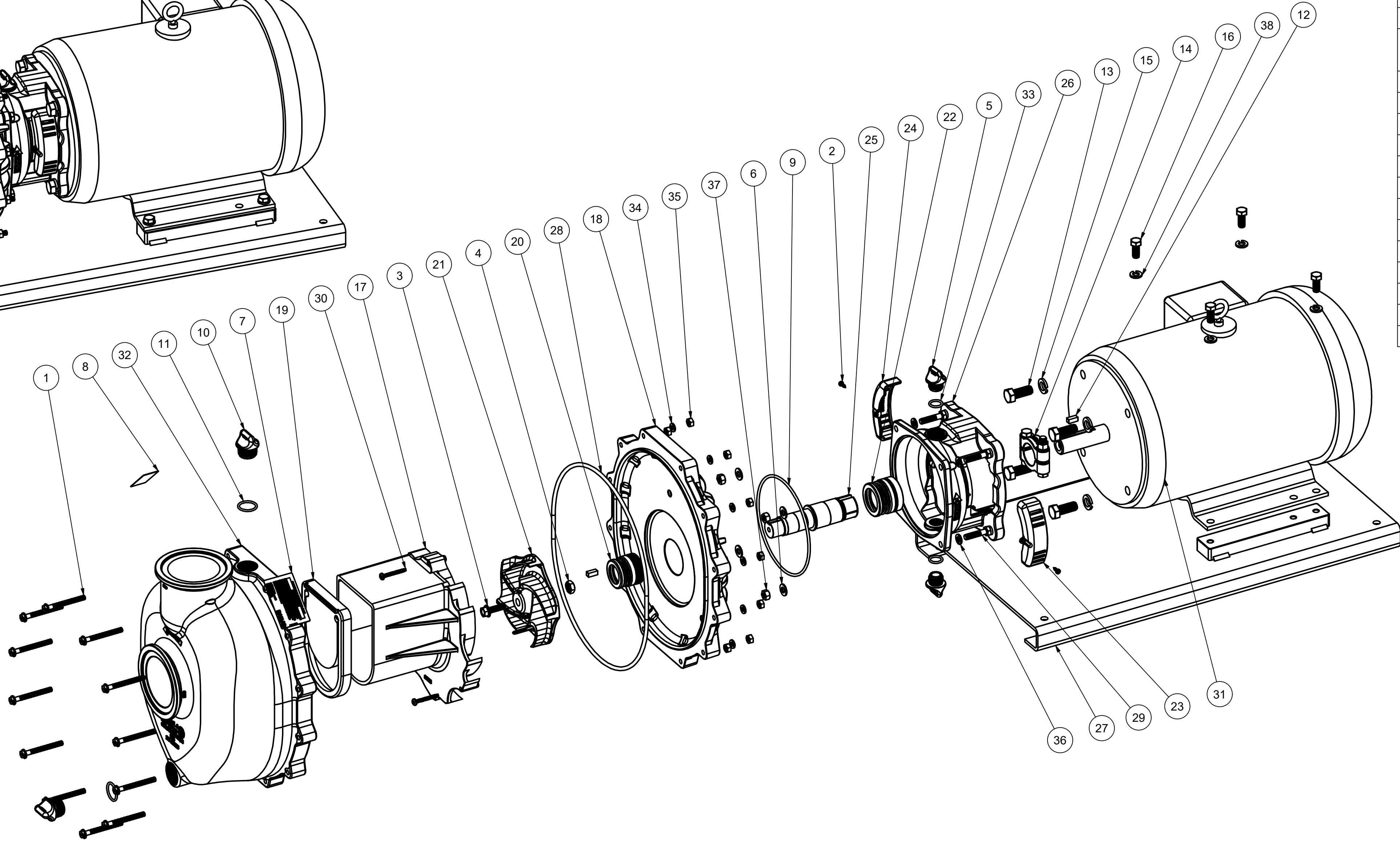
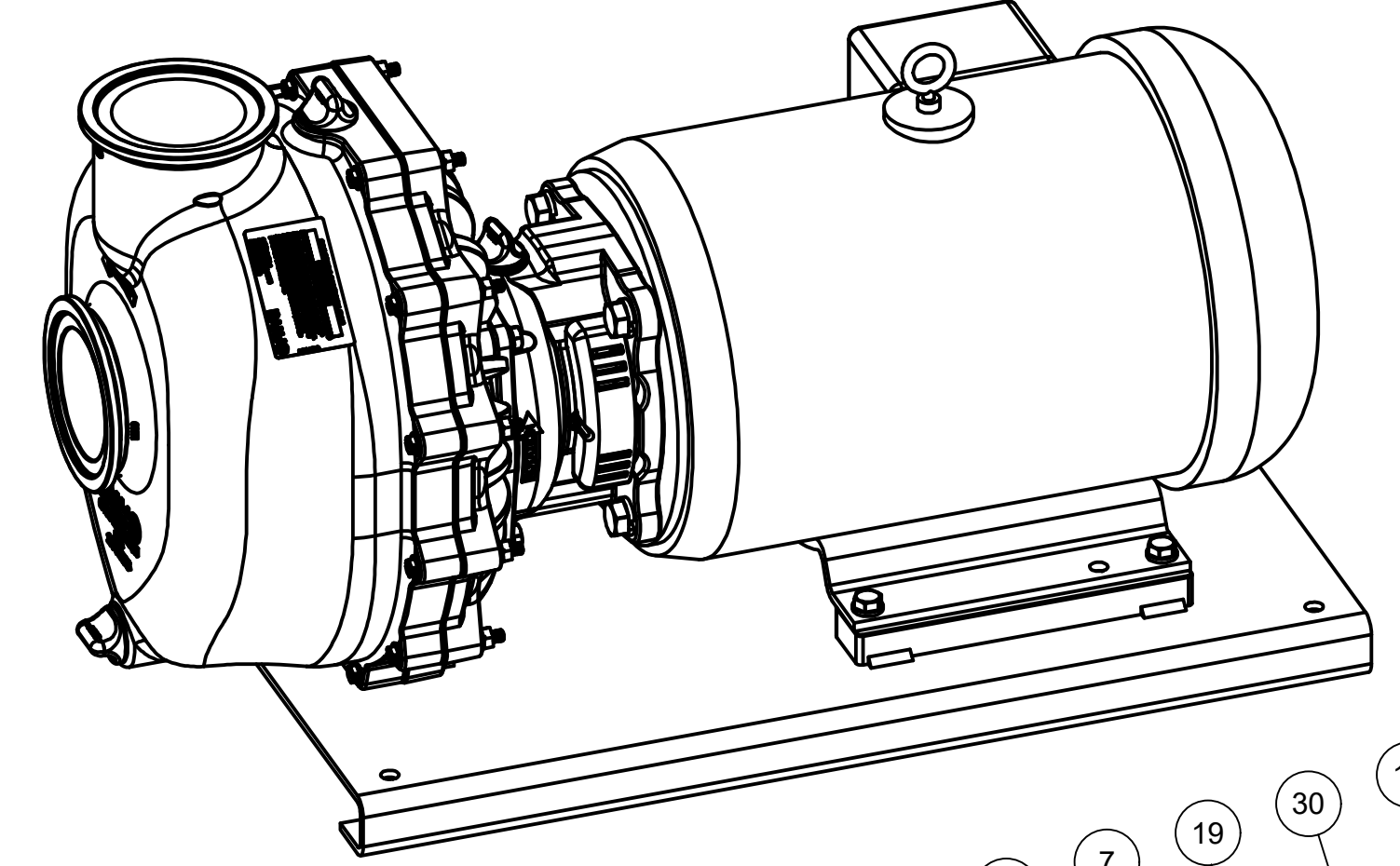


SECTION B-B  
SCALE .25



Parts List			
ITEM	QTY	PART NUMBER	DESCRIPTION
1	12	12720	1/4-20 X 2 1/2" SL IND HEX WASHER HEAD SCREW
2	2	12725	#6 X 1/2" PPH SMS
3	1	12765A	5/16-24 X 1 1/8" HFS
4	1	12775A	7/16-14 HEX NUT
5	2	12777	1/2" DRAIN PLUG
6	4	12901	5/16" FLAT WASHER
7	1	12910	PUMP WARNING LABEL
8	1	12911D	PUMP PSI DECAL
9	1	13719	AS568A -256 O-RING, EPDM, BLACK
10	2	13777	3/4" DRAIN PLUG, MOLDED
11	2	13778	AS568A -119 O-RING, EPDM, BLACK
12	2	16901	1/4" SQ. X 3/4" KEY
13	4	17449	1/2-13 X 1 1/4" HHCS
14	1	18029	CLAMP
15	4	18058	1/2" LOCKWASHER
16	4	18512	3/8-16 X 7/8" HHCS
17	1	35002	M350 DIFFUSER
18	1	35004	M350 REAR BRACKET
19	1	35005	3" WET SEAL POLY PUMP CHECK VALVE
20	1	35013E	1.125" MECHANICAL SEAL, EPDM, INDIV BOX
21	1	35073	M350 5-VANE IMPELLER
22	1	35213E	1.375" MECHANICAL SEAL, EPDM, INDIV BOX
23	1	35246GL	LEFT SHAFT GUARD FOR M350P
24	1	35246GR	RIGHT SHAFT GUARD FOR M350P
25	1	35255A	3" WET SEAL POLY PUMP SHAFT ADAPTER FOR BEM15-100
26	1	35401	M350 WET SEAL RESERVOIR, ELEC
27	1	35433	BASE PLATE
28	1	A380E	AS568 #380 EPDM O-RING
29	4	B0516138	5/16-18 X 1 3/8" HHCS
30	3	B1014150TS	#10 X 1 1/2 THREAD FORMING SCREW, 18-8 SS
31	1	BEM15-100	15 HP ELEC. MTR. - Ø1" SHAFT
32	1	M35012	M350 MANIFOLD BODY
33	2	UV15163	AS568A -114 O-RING, EPDM, BLACK
34	12	V07018	1/4" LOCKWASHER
35	12	V07019	1/4"-20 S.S. HEX NUT
36	4	V10118	5/16" LOCKWASHER
37	4	V10119	5/16"-18 SS NUT
38	4	V20018	3/8" LOCKWASHER



THIS DRAWING AND ALL INFORMATION CONTAINED THEREON ARE THE EXCLUSIVE PROPERTY OF BANJO CORPORATION.  
UNLESS SPECIFICALLY NOTED, THIS DRAWING AND ITEMS SHOWN ON THIS DRAWING ARE SUBJECT TO CHANGE AT ANY TIME.

BANJO CORPORATION  
150 BANJO DRIVE, CRAWFORDSVILLE, IN 47933  
WEB SITE: WWW.BANJO.CORP.COM  
E-MAIL: BANJOSALES@DEXCORP.COM  
DESCRIPTION  
3" POLY PUMP W/ 15HP ELEC MTR  
PART NUMBER  
M350PE15W