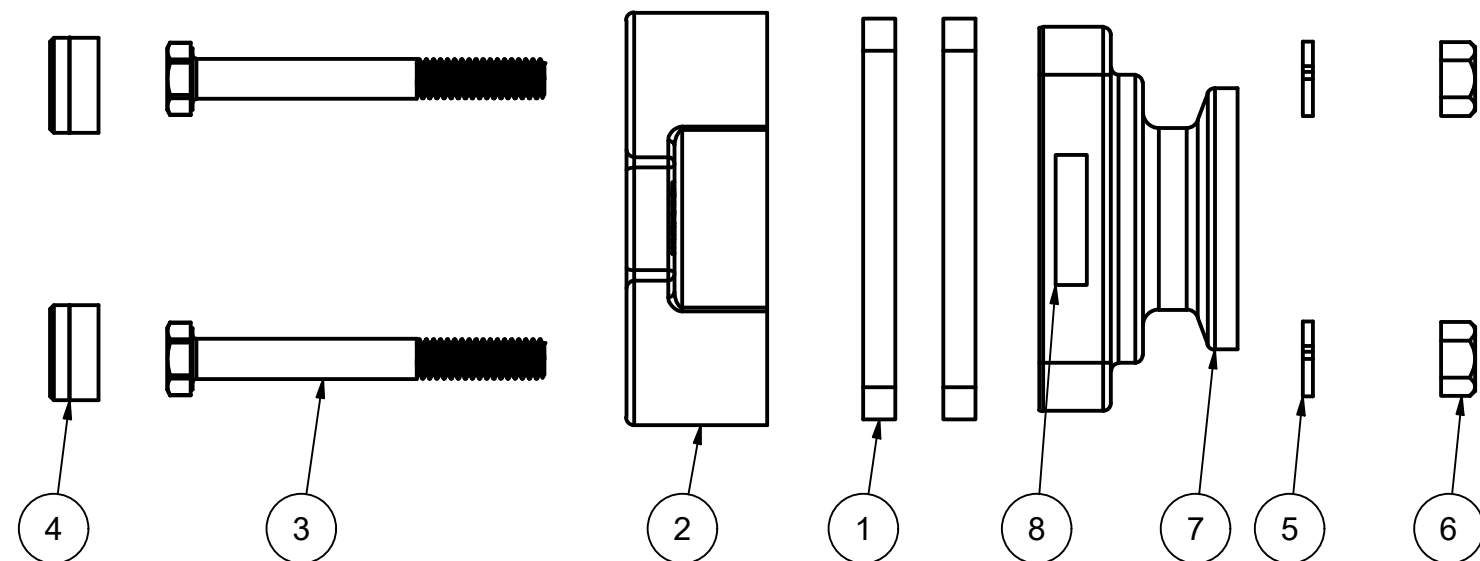


| PARTS LIST | | | |
|------------|-----|-------------|-----------------------------------|
| ITEM | QTY | PART NUMBER | DESCRIPTION |
| 1 | 2 | BF100GE | 1" B.F. GASKET |
| 2 | 1 | BF101 | BOLTED FLANGE END PLATE |
| 3 | 4 | BF109 | 5/16"-18x2.75 HHCS 18-8SS |
| 4 | 4 | BF304A | BOLTED FLANGE PLUG |
| 5 | 4 | V10118 | 5/16" LOCKWASHER |
| 6 | 4 | V10119 | 5/16" HEX NUT |
| 7 | 1 | V10178 | 1" MANIFOLD BF ENDPLATE, MACHINED |
| 8 | 1 | VL1004 | EPDM DECAL |



THIS DRAWING AND ALL INFORMATION CONTAINED THEREON ARE THE EXCLUSIVE PROPERTY OF BANJO CORPORATION.

UNLESS SPECIFICALLY NOTED, THIS DRAWING AND ITEMS SHOWN ON THIS DRAWING ARE SUBJECT TO CHANGE AT ANY TIME.

BANJO CORPORATION

150 BANJO DRIVE, CRAWFORDSVILLE, IN 47933
 WEB SITE: WWW.BANJOCORP.COM
 E-MAIL: BANJOSALES@IDEXCORP.COM

DESCRIPTION
 1" BOLTED MANIFOLD TANK FLANGE, W/
 2-3/4" BOLTS

PART NUMBER
 MBF105