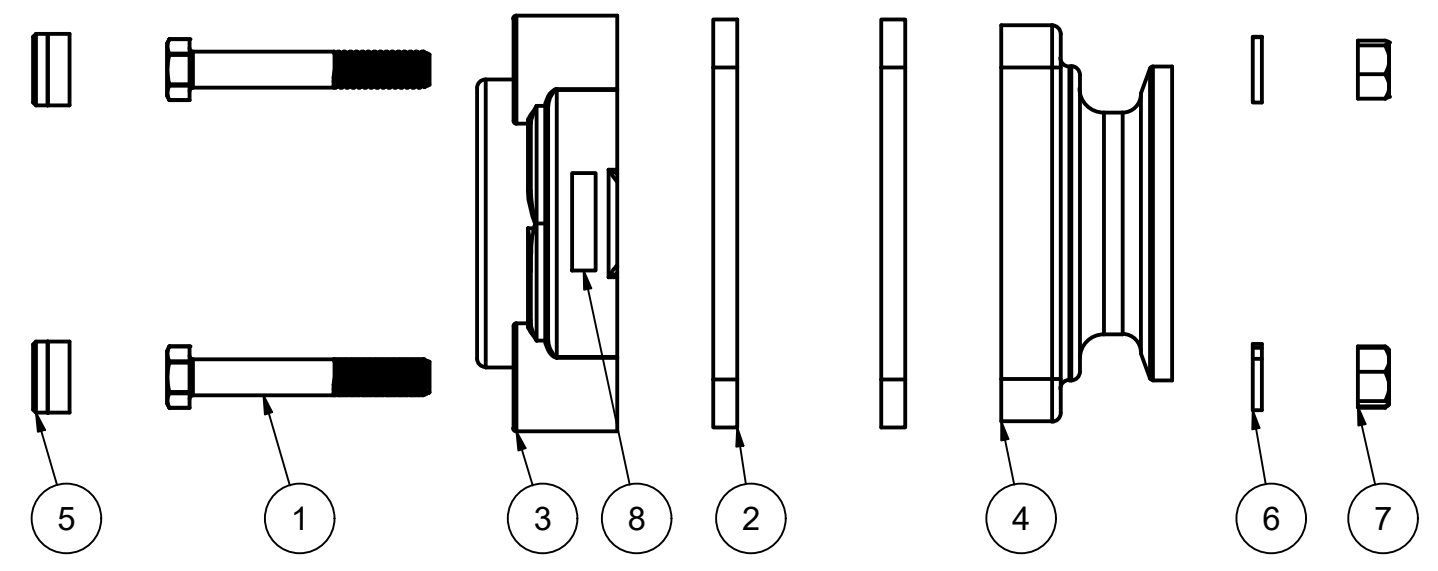
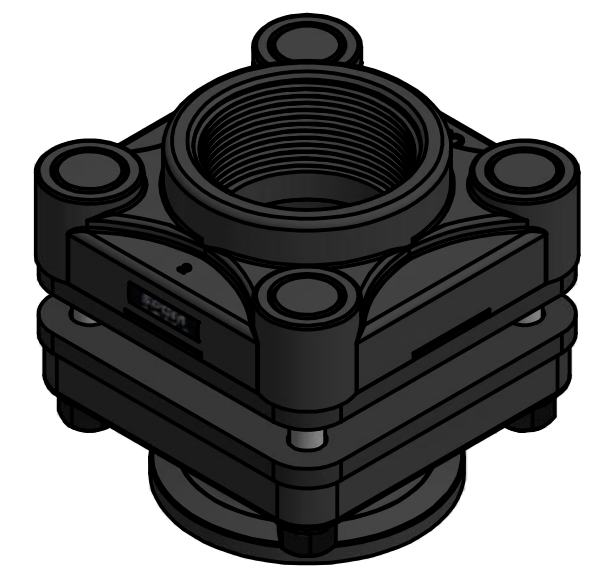



PARTS LIST			
ITEM	QTY	PART NUMBER	DESCRIPTION
1	4	BF206	3/8-16 X 2 1/2" HHCS
2	2	BF220GE	2" FP B.T.F. Gasket - EPDM
3	1	BF221	2" Full Port Flange
4	1	BF278	2" FP (4) BOLT FLANGE, MACHINED
5	4	BF304A	BOLTED FLANGE PLUG
6	4	V20018	3/8" LOCKWASHER
7	4	V20019	3/8" HEX NUT
8	1	VL1004	EPDM DECAL



THIS DRAWING AND ALL INFORMATION CONTAINED THEREON ARE THE EXCLUSIVE PROPERTY OF BANJO CORPORATION.

UNLESS SPECIFICALLY NOTED, THIS DRAWING AND ITEMS SHOWN ON THIS DRAWING ARE SUBJECT TO CHANGE AT ANY TIME.



BANJO CORPORATION

150 BANJO DRIVE, CRAWFORDSVILLE, IN 47933
 WEB SITE: WWW.BANJOCORP.COM
 E-MAIL: BANJOSALES@IDEXCORP.COM

DESCRIPTION
2" FP MANIFOLD TANK FLANGE W/ 2-1/2" BOLTS

PART NUMBER
MBF220