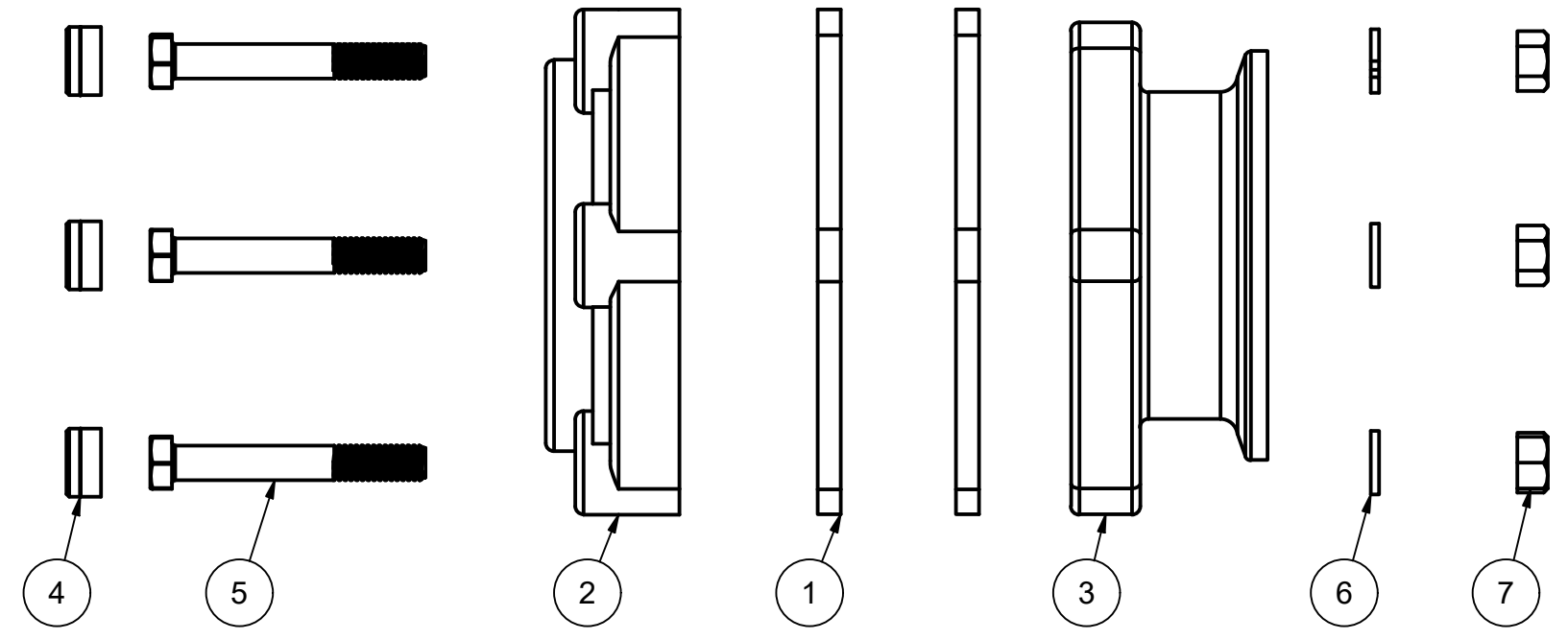
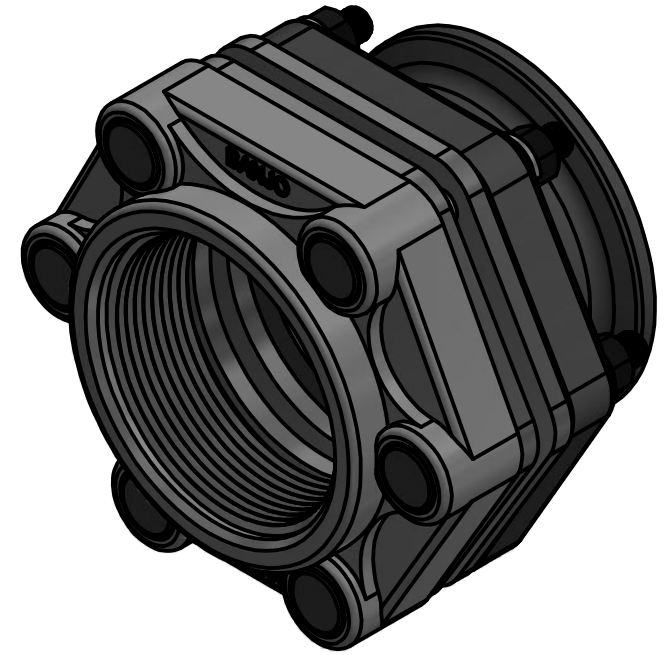


Parts List			
ITEM	QTY	PART NUMBER	DESCRIPTION
1	2	BF300GE	3" BOLTED FLG GASKET
2	1	BF301	3" BOLTED FLG END PLATE
3	1	BF30178	3" FLG END PLATE
4	6	BF304A	BOLTED FLANGE PLUG
5	6	BF306	3/8"-16 x 2.75" HHCS
6	6	V20018	3/8" LOCKWASHER
7	6	V20019	3/8" HEX NUT
8	1	VL1004	EPDM LABEL (N/S)



THIS DRAWING AND ALL INFORMATION CONTAINED THEREON ARE THE EXCLUSIVE PROPERTY OF BANJO CORPORATION.

UNLESS SPECIFICALLY NOTED, THIS DRAWING AND ITEMS SHOWN ON THIS DRAWING ARE SUBJECT TO CHANGE AT ANY TIME.



BANJO CORPORATION

150 BANJO DRIVE, CRAWFORDSVILLE, IN 47933
 WEB SITE: WWW.BANJOCORP.COM
 E-MAIL: BANJOSALES@IDEXCORP.COM

DESCRIPTION	3" FLANGE X FEMALE THREAD, EPDM
PART NUMBER	MBF300

B

B

A

A