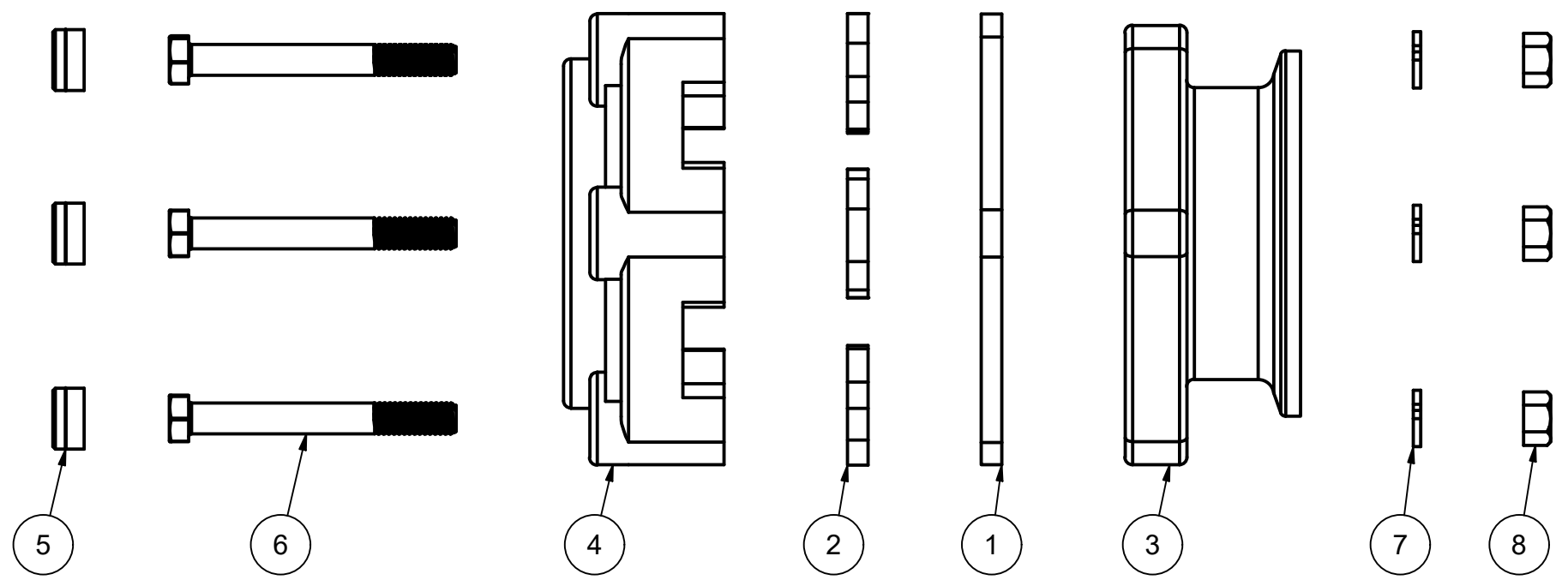



Parts List			
ITEM	QTY	PART NUMBER	DESCRIPTION
1	1	BF300GE	3" BOLTED FLG GASKET
2	6	BF300GFE	3" BOTTOM DRAIN GASKET
3	1	BF30178	3" FLG END PLATE
4	1	BF301BD	3" BOLTED FLG END PLATE
5	6	BF304A	BOLTED FLANGE PLUG
6	6	BF307	3/8"-16 x 3.25" HHCS
7	6	V20018	3/8" LOCKWASHER
8	6	V20019	3/8" HEX NUT
9	1	VL1004	EPDM DECAL (NS)



THIS DRAWING AND ALL INFORMATION CONTAINED THEREON ARE THE EXCLUSIVE PROPERTY OF BANJO CORPORATION.

UNLESS SPECIFICALLY NOTED, THIS DRAWING AND ITEMS SHOWN ON THIS DRAWING ARE SUBJECT TO CHANGE AT ANY TIME.



**BANJO CORPORATION**

150 BANJO DRIVE, CRAWFORDSVILLE, IN 47933  
 WEB SITE: WWW.BANJOCORP.COM  
 E-MAIL: BANJOSALES@IDEXCORP.COM

DESCRIPTION	3" FLANGE X 3" FEMALE THREAD, EPDM
PART NUMBER	MBF300BD