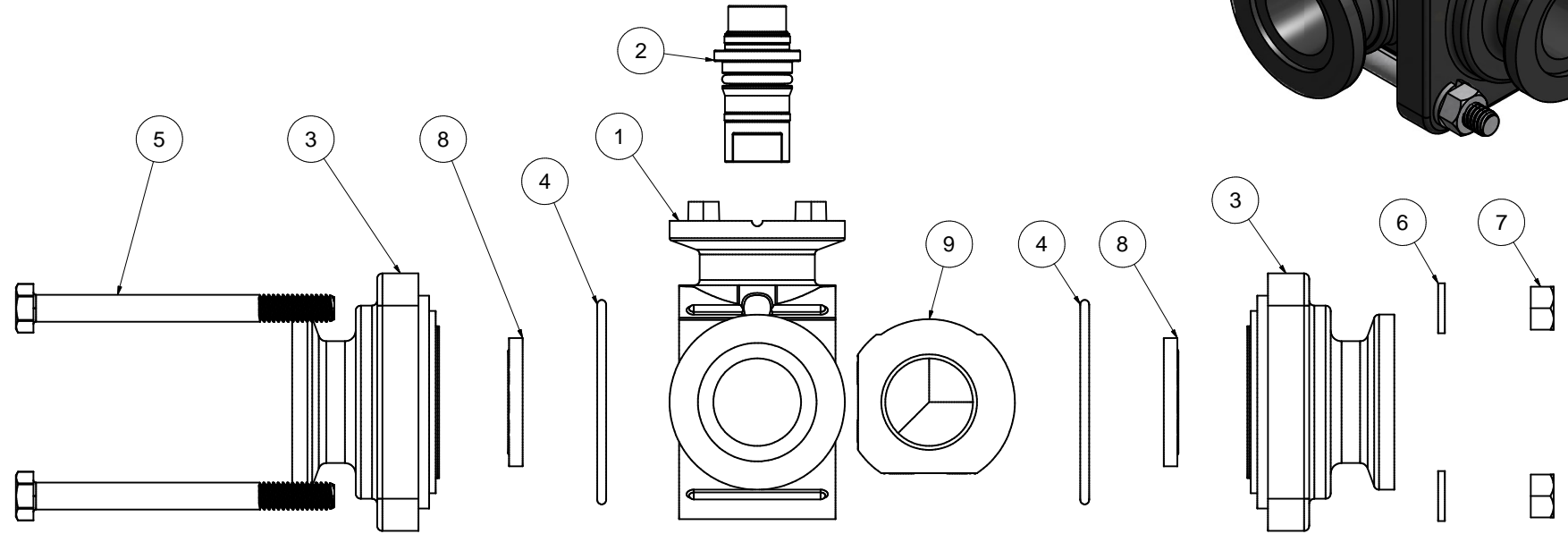
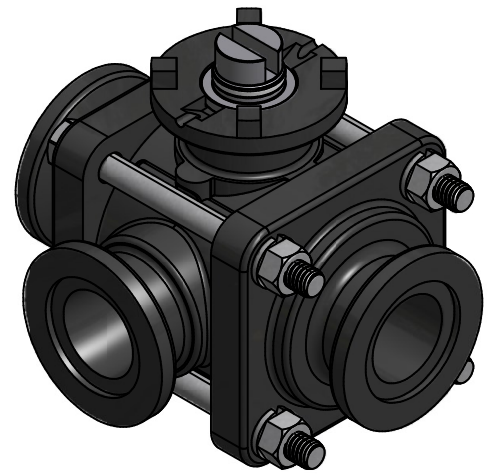


		Parts List	
ITEM	QTY	PART NUMBER	DESCRIPTION
1	1	MEV10354AS	1" FP SL Manifold Style Ve Body
2	1	MEV10151	1" Top Load Stem Assy
3	2	VE10278A	1" VE Flange Endplate
4	2	VE10264E	#139 O-RING, EPDM
5	4	V10117	5/16 - 18 X 3 1/2" HHCS
6	4	V10118	5/16" LOCKWASHER
7	4	V10119	5/16" HEX NUT
8	2	VE10258A	1" VE Seat TFM
9	1	VE10355	1" FP VE 3-Way SS Ball



Assembly Specs:
 Body Bolt Tightening Torque: 75 in-lb
 Max Stem Turning Torque: 50 in-lb

THIS DRAWING AND ALL INFORMATION CONTAINED THEREON ARE THE EXCLUSIVE PROPERTY OF BANJO CORPORATION.

 UNLESS SPECIFICALLY NOTED, THIS DRAWING AND ITEMS SHOWN ON THIS DRAWING ARE SUBJECT TO CHANGE AT ANY TIME.

BANJO CORPORATION 150 BANJO DRIVE, CRAWFORDSVILLE, IN 47933 WEB SITE: WWW.BANJOCORP.COM E-MAIL: SALES1@BANJOCORP.COM	
DESCRIPTION	1" SL Manifold Valve SubAssy
PART NUMBER	MEV100SLXR1