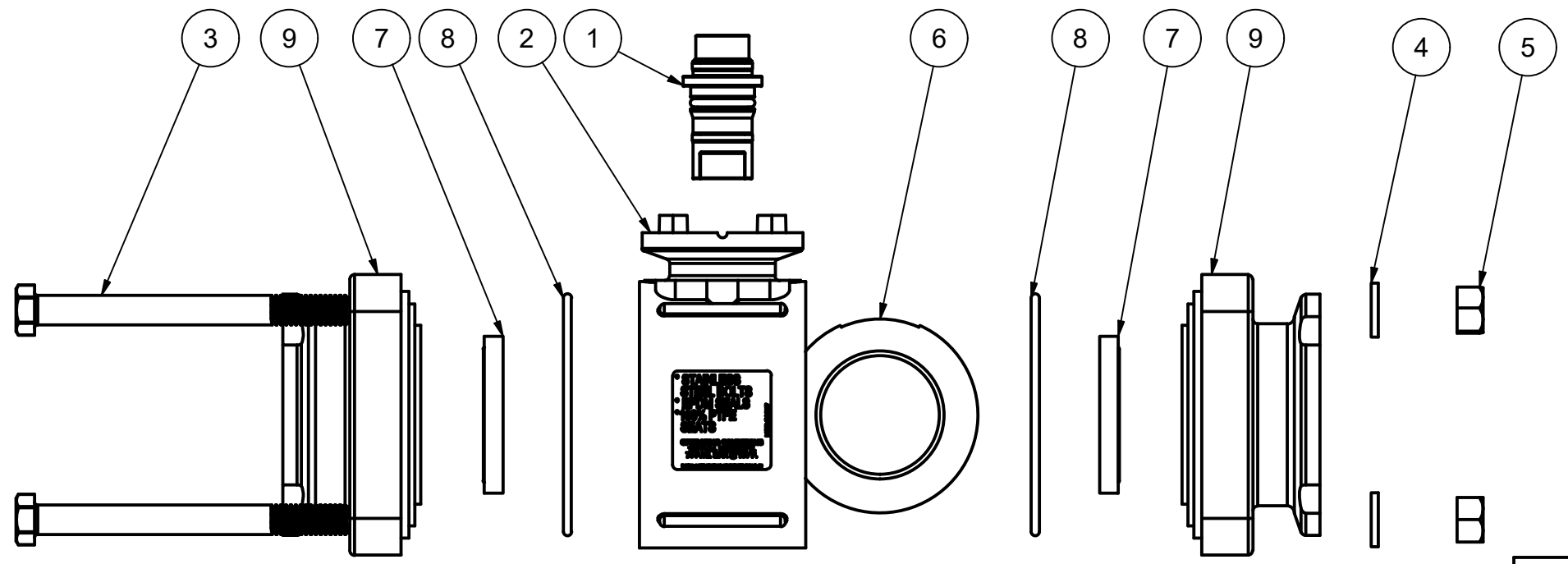
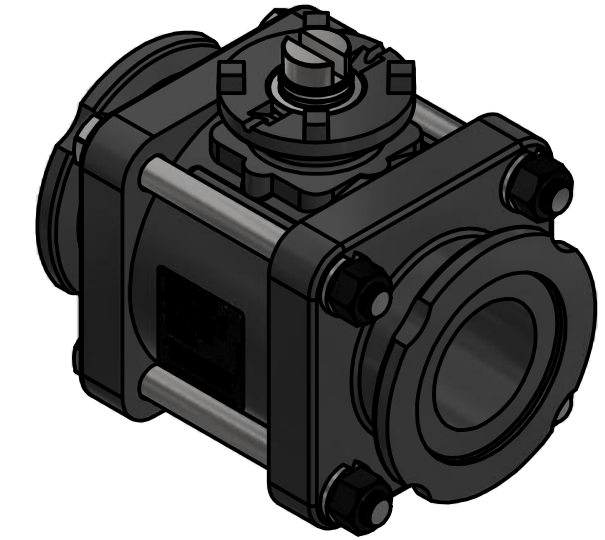


Parts List			
ITEM	QTY	PART NUMBER	DESCRIPTION
1	1	MEV10151	1" Top Load Stem Assy
2	1	MEV20254A	2" VE BODY
3	4	V20017	3/8-16 X 4" HHCS
4	4	V20018	3/8" LOCKWASHER
5	4	V20019	3/8" HEX NUT
6	1	VE20255SSH	2" VE SS Hollow Ball
7	2	VE20258A	2" VE Seat TFM
8	2	VE20264E	2-150 O'RING, EPDM
9	2	VE20294A	2" Manifold EV Endplate
10	1	VL1007	150 PSI PRESSURE LABEL EPDM SEALS



Assembly Specs:
 Body Bolt Tightening Torque: 75 in-lb
 Max Stem Turning Torque: 50 in-lb

THIS DRAWING AND ALL INFORMATION CONTAINED THEREON ARE THE EXCLUSIVE PROPERTY OF BANJO CORPORATION.
 UNLESS SPECIFICALLY NOTED, THIS DRAWING AND ITEMS SHOWN ON THIS DRAWING ARE SUBJECT TO CHANGE AT ANY TIME.



BANJO CORPORATION
 150 BANJO DRIVE, CRAWFORDSVILLE, IN 47933
 WEB SITE: WWW.BANJOCORP.COM
 E-MAIL: BANJOSALES@IDEXCORP.COM

DESCRIPTION	2" Manifold Valve SubAssy
PART NUMBER	MEV200XR1

B

B

A

A

A

A

4

3

2

1