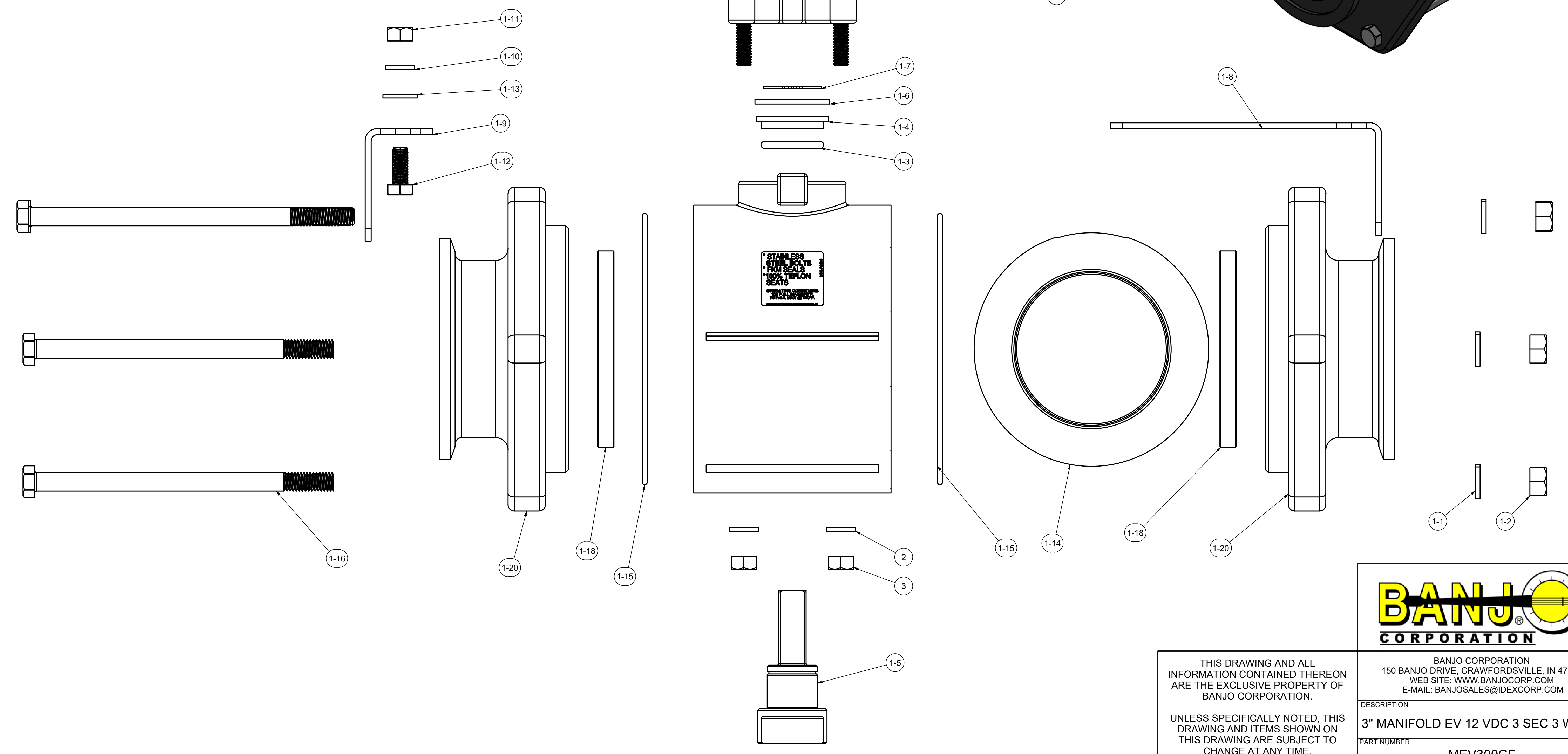
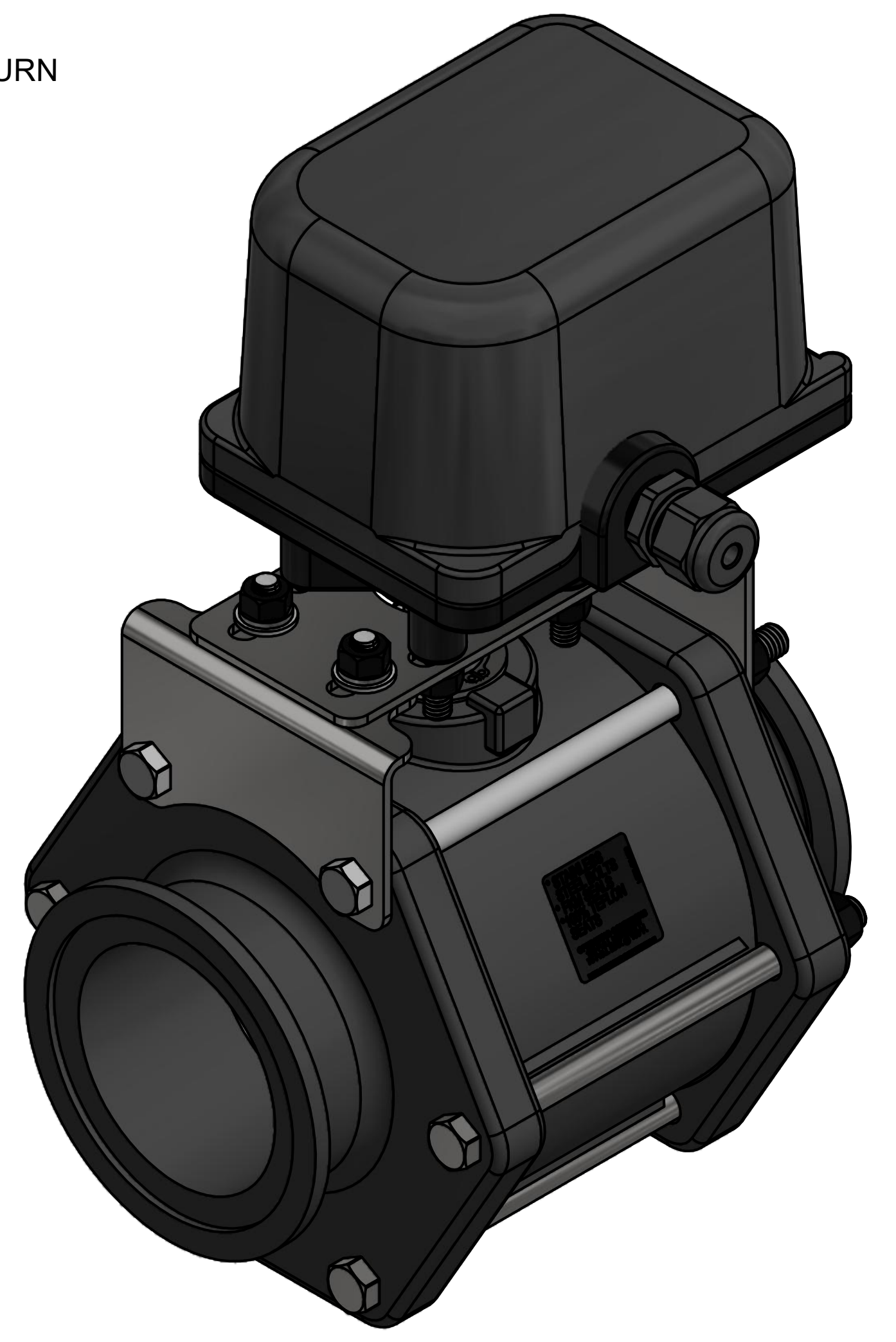


CYCLE TIME: 3 SEC / QUARTER TURN  
VOLTAGE: 12 VDC

ITEM	QTY	PART NUMBER	DESCRIPTION
1	1	MEV300XR1A	3" FP MNFLD ELECTRIC VALVE ONLY
1-1	6	V20018	3/8" LOCKWASHER
1-2	6	V20019	3/8" HEX NUT
1-3	1	V25163	AS568A -214 O-RING, FKM, BROWN
1-4	1	V25160	Stem Bushing
1-5	1	VE30151SS	Electric Valve Stem SS
1-6	1	VE30121	1" 18-8SS Shim
1-7	1	VE30022	1" External Snap Ring - SS
1-8	1	VE35188	3" FP EV Actuator Large Bracket
1-9	1	VE35189	3" FP Actuator Small Bracket
1-10	2	V10118	5/16" LOCKWASHER
1-11	2	V10119	5/16" HEX NUT
1-12	2	17019	5/16-18 X 3/4" HHCS
1-13	2	12901	5/16" FLAT WASHER
1-14	1	V35255ASS	3" FP SS Hollow Ball
1-15	2	V35265	AS568A -160 O-RING, FKM, BROWN
1-16	4	V35017	3/8"-16 x 6" HHCS, 18-8SS
1-17	2	V35018	3/8"-16 x 6.5" HHCS, 18-8SS
1-18	2	VE35258B	3" FP Ball Seat
1-19	1	V35254	3" FP VALVE BODY
1-20	2	V35278	3" FP MANIFOLD ENDPLATE, MACHINED
2	4	V10118	5/16" LOCKWASHER
3	4	V10119	5/16" HEX NUT
4	1	VE5630	Rect Actuator, 12VDC, 3 Sec, 3 Wire



THIS DRAWING AND ALL INFORMATION CONTAINED THEREON ARE THE EXCLUSIVE PROPERTY OF BANJO CORPORATION.

BANJO CORPORATION  
150 BANJO DRIVE, CRAWFORDSVILLE, IN 47933  
WEB SITE: WWW.BANJOCORP.COM  
E-MAIL: BANJOSALES@IDEXCORP.COM

UNLESS SPECIFICALLY NOTED, THIS DRAWING AND ITEMS SHOWN ON THIS DRAWING ARE SUBJECT TO CHANGE AT ANY TIME.

DESCRIPTION  
3" MANIFOLD EV 12 VDC 3 SEC 3 WIRE  
PART NUMBER  
MEV300CF