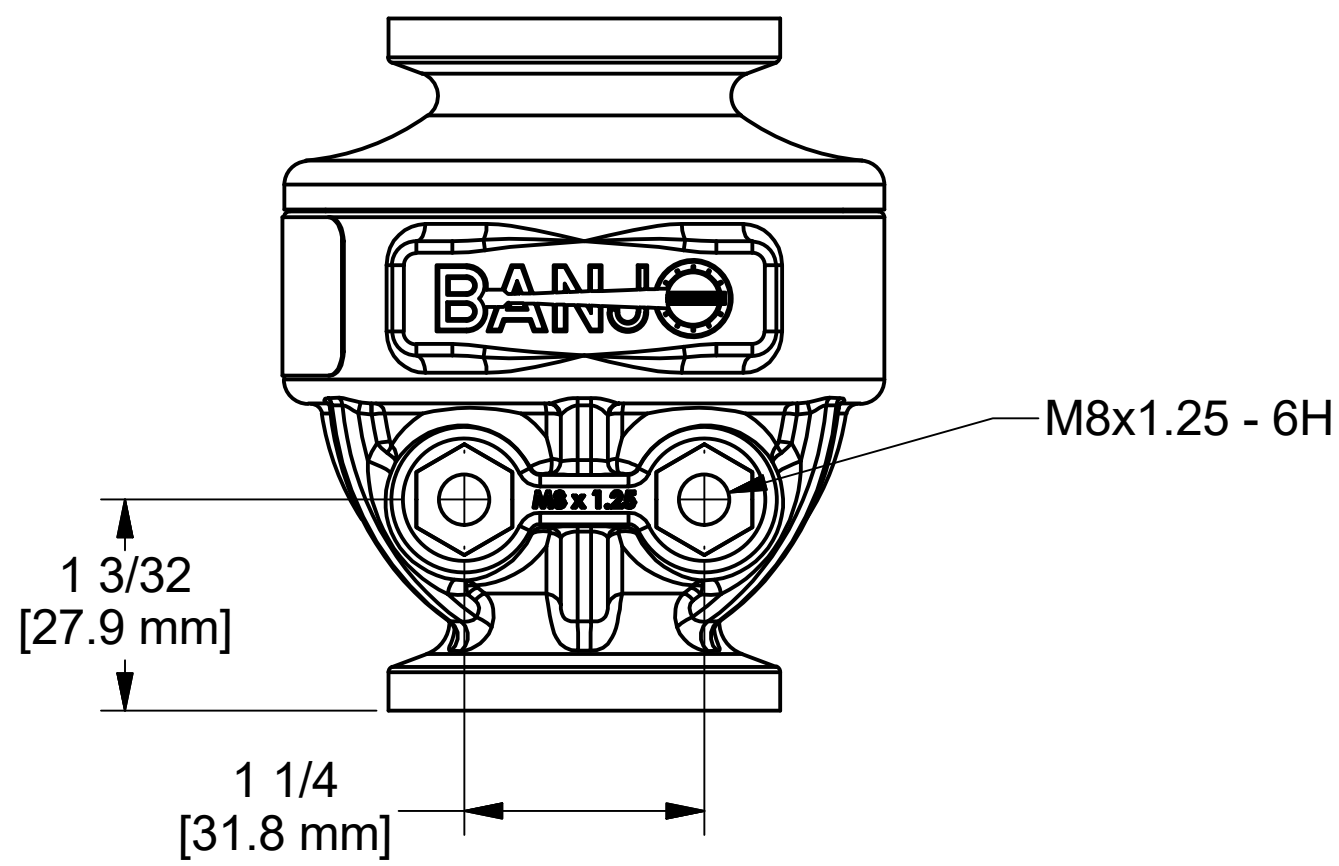
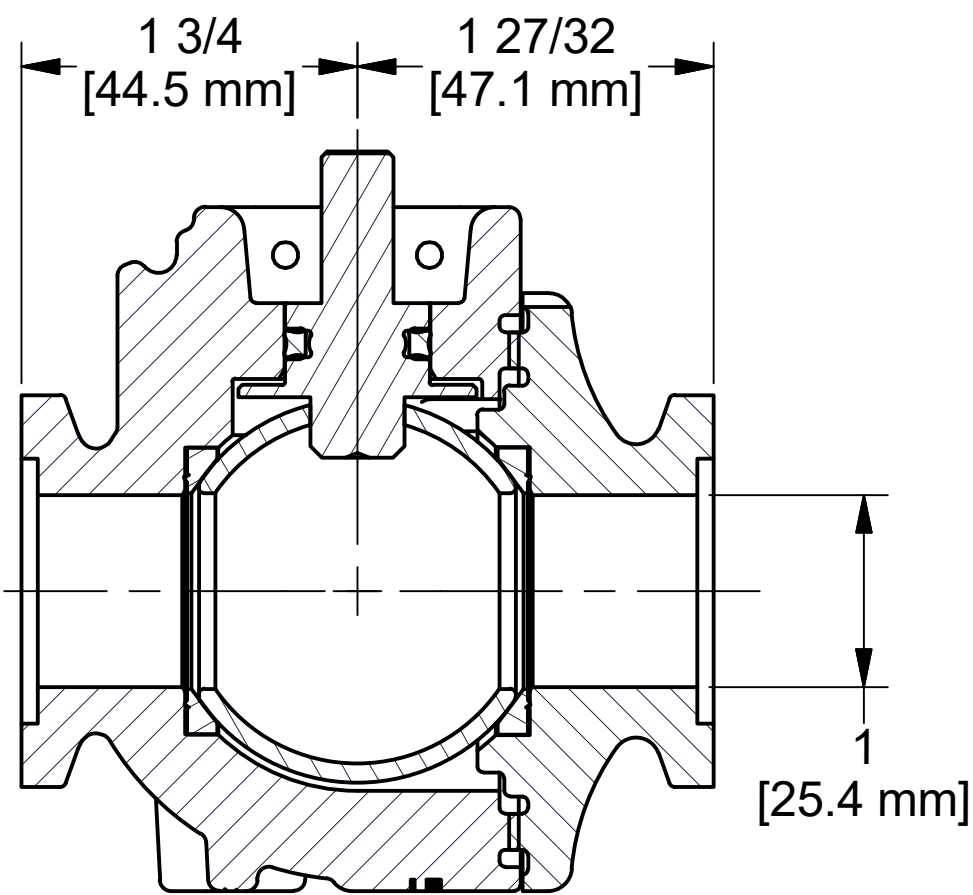
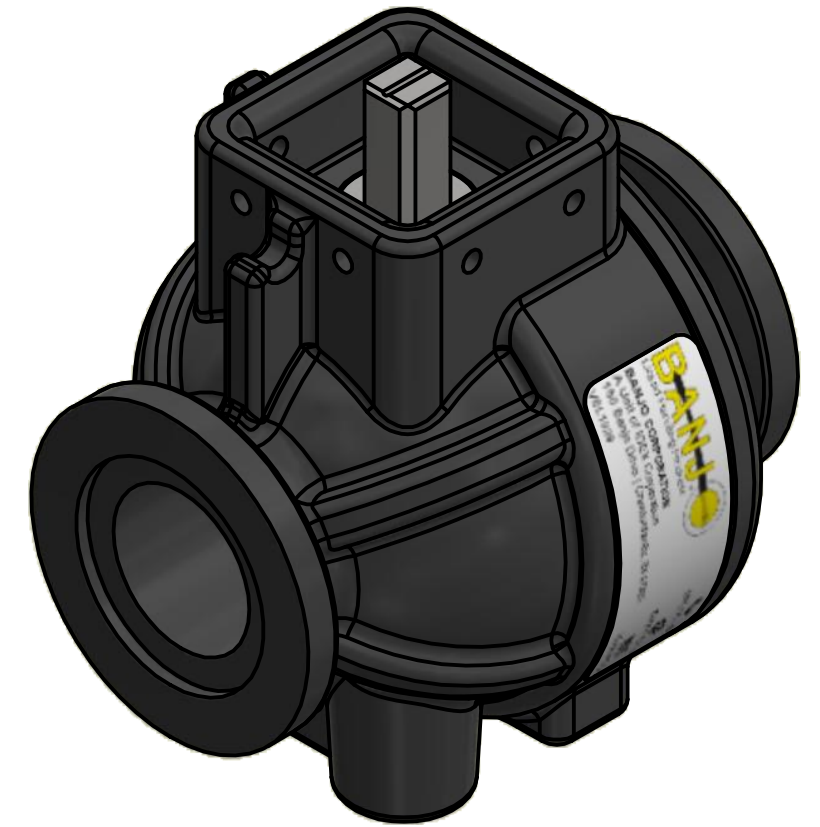
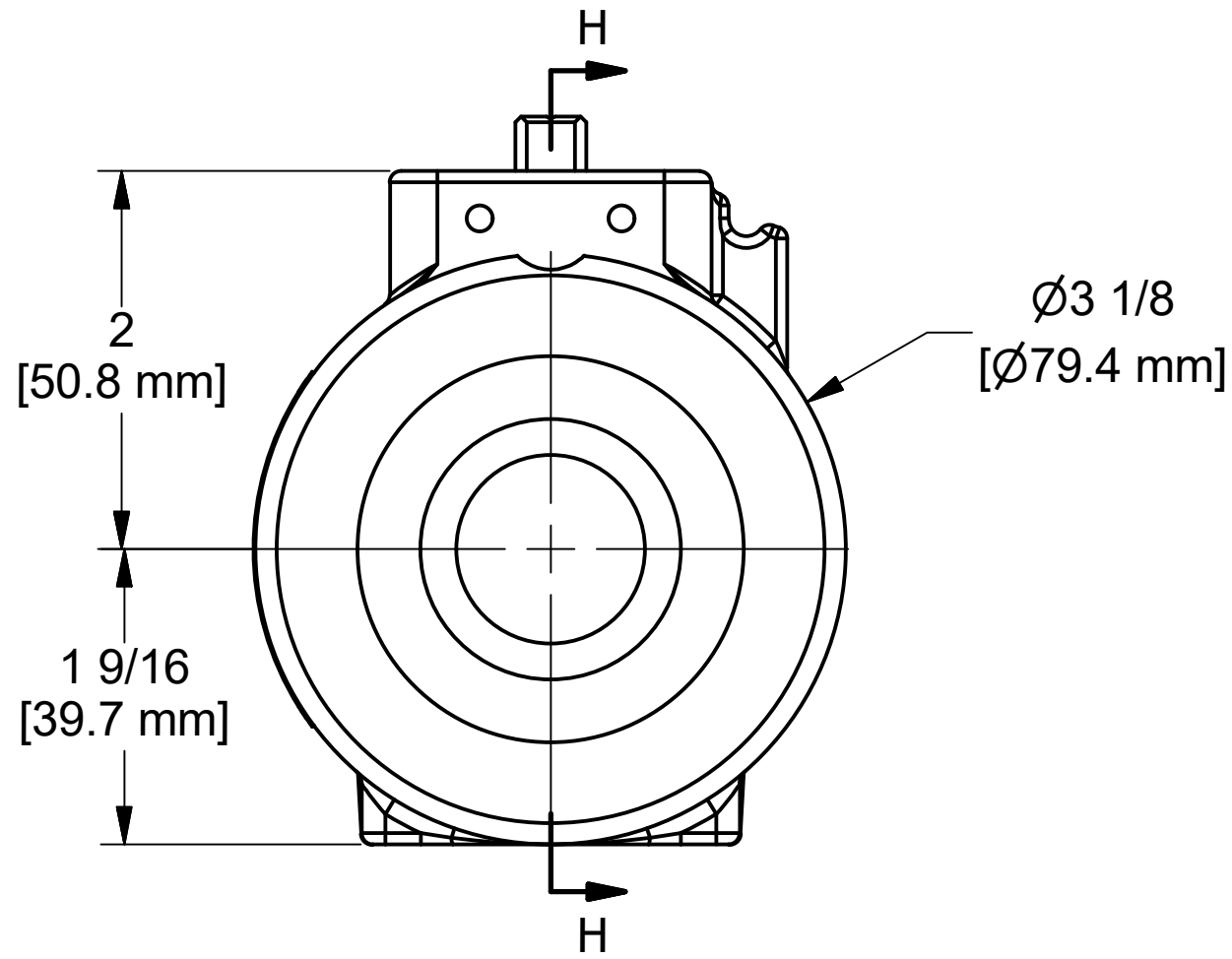


Parts List			
ITEM	QTY	PART NUMBER	DESCRIPTION
1	1	AQ206V	#206 QUAD RING, FKM
2	1	EVP20251	ELEC. VALVE STEM
3	1	MEVPS10254H	1" FP MANIFOLD EV BODY
4	1	MEVPS10378H	1" FP EV MNFLD ENDPLATE
5	1	VE10155SSH	1" VE SS Hollow Ball
6	2	VE10258A	1" VE Seat TFM
7	1	VEL1029	EVX RFID VALVE ADDRESS LABEL



THIS DRAWING AND ALL INFORMATION CONTAINED THEREON ARE THE EXCLUSIVE PROPERTY OF BANJO CORPORATION.

UNLESS SPECIFICALLY NOTED, THIS DRAWING AND ITEMS SHOWN ON THIS DRAWING ARE SUBJECT TO CHANGE AT ANY TIME.

BANJO CORPORATION

BANJO CORPORATION
 150 BANJO DRIVE, CRAWFORDSVILLE, IN 47933
 WEB SITE: WWW.BANJOCORP.COM
 E-MAIL: BANJOSALES@IDEXCORP.COM

DESCRIPTION
 1" FP EV STUBBY VALVE ASSY

PART NUMBER
 MEVX100HX