

4

3

2

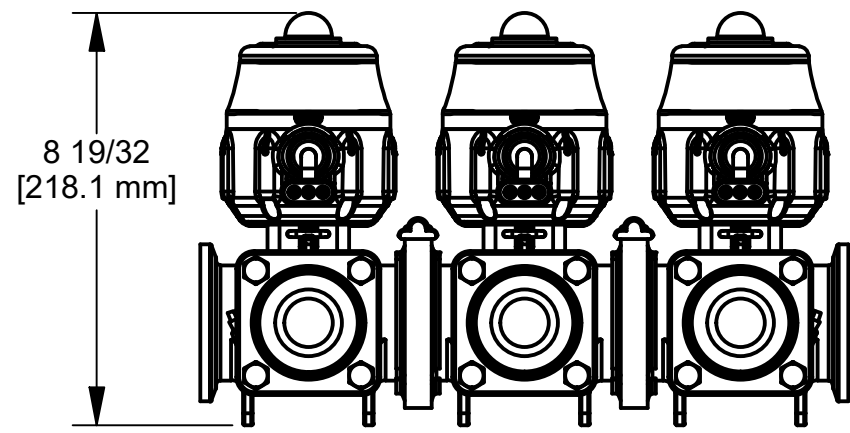
1

WIRING:
 PIN A: RED = +12VDC
 PIN B: BLACK = GND
 PIN C: WHITE = +12VDC (OPEN), 0VDC (CLOSE)

CONNECTOR: APTIV (FORMERLY DELPHI):
 12010717

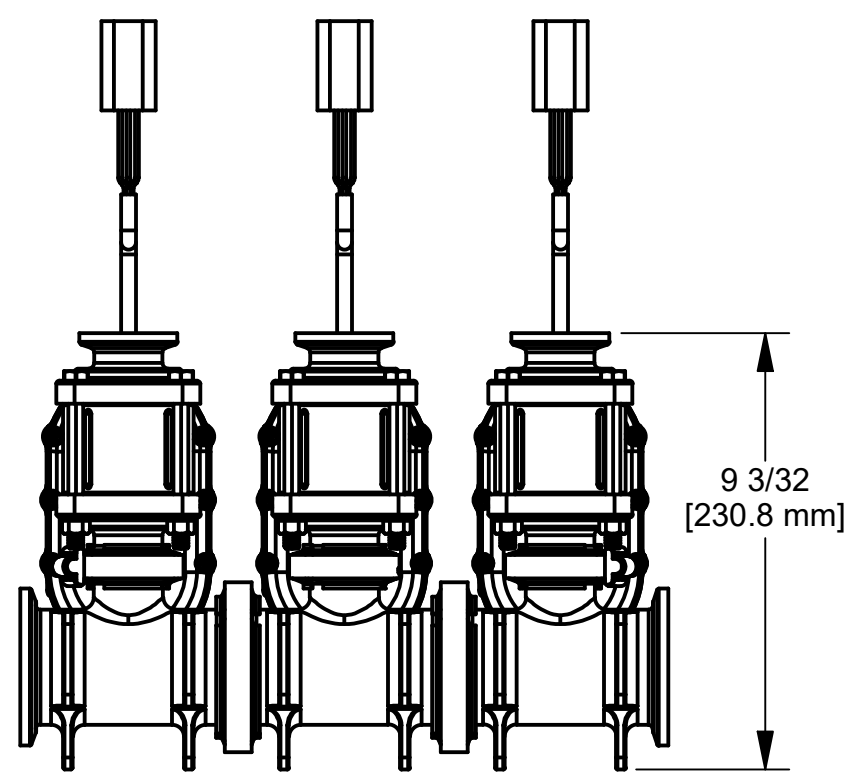
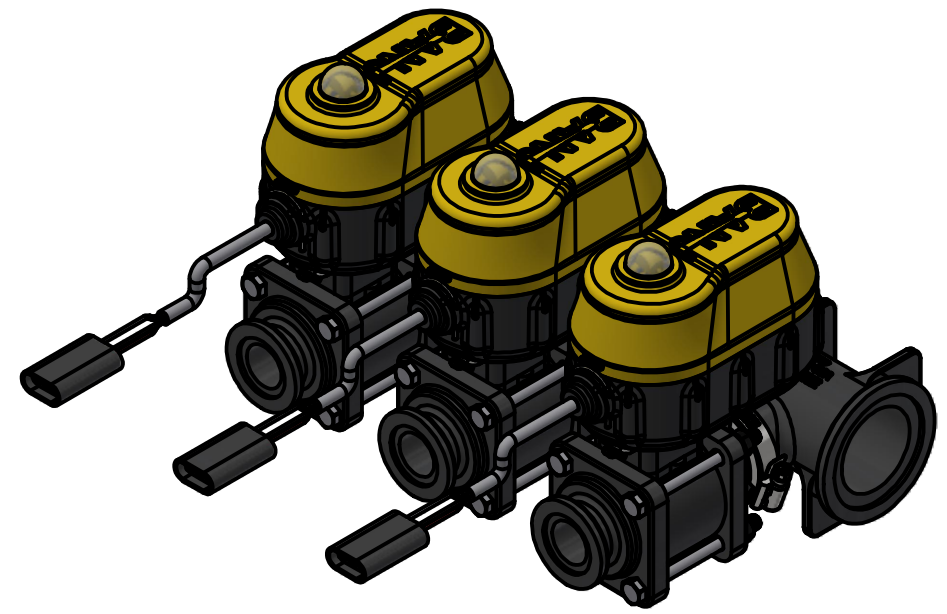
WIRE LENGTH: 18" ± 1"

Parts List			
ITEM	QTY	PART NUMBER	DESCRIPTION
1	3	EP21A10310	EVX ACT 0.75S WWC 3W
2	3	EVP20001	EV U-PIN
3	3	FC100	100 SERIES WORM SCREW CLAMP
4	2	FC220	220 SERIES WORM SCREW CLAMP
5	3	M102G	1" MANIFOLD GASKET W/ SKIRT
6	2	M222G	2" FP MANIFOLD GASKET W/ SKIRT
7	3	M220100TEE	2" FP X 1" MANIFOLD TEE
8	3	MEVX101EX	1" MEVX 2-WAY BOLTED VALVE, EPDM
9	9	VE001	CABLE SEAL
10	9	VE002	MALE TERMINAL
11	3	VE003	3 Conductor Female Shroud

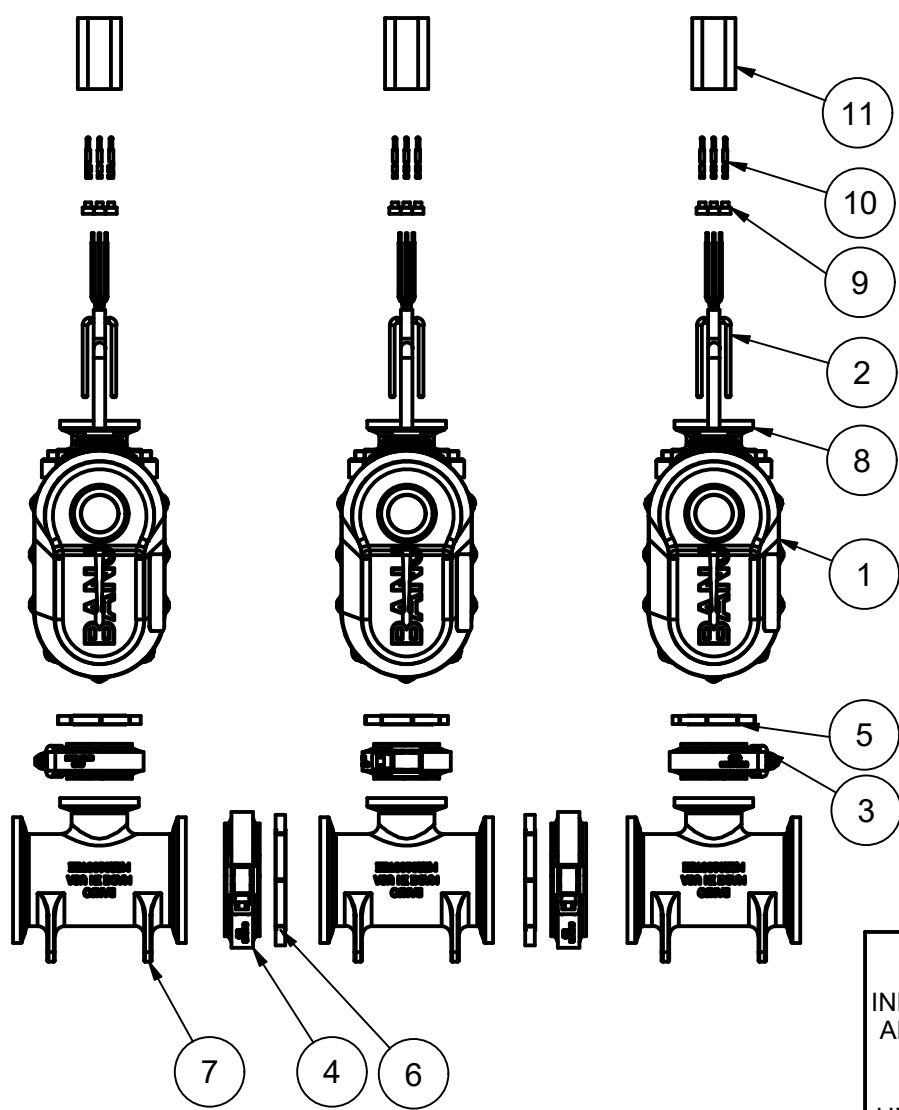


B

*TO PURCHASE ACTUATOR ONLY WITH
 CONNECTOR: PART NUMBER IS: **EP21A10310C3**



A



THIS DRAWING AND ALL INFORMATION CONTAINED THEREON ARE THE EXCLUSIVE PROPERTY OF BANJO CORPORATION.

UNLESS SPECIFICALLY NOTED, THIS DRAWING AND ITEMS SHOWN ON THIS DRAWING ARE SUBJECT TO CHANGE AT ANY TIME.

BANJO CORPORATION

150 BANJO DRIVE, CRAWFORDSVILLE, IN 47933
 WEB SITE: WWW.BANJOCORP.COM
 E-MAIL: BANJOSALES@IDEXCORP.COM

DESCRIPTION
MEVX BOLTED 3 BANK 2" FP IN, 1" OUT

PART NUMBER
MEVX1013C

4

3

2

1