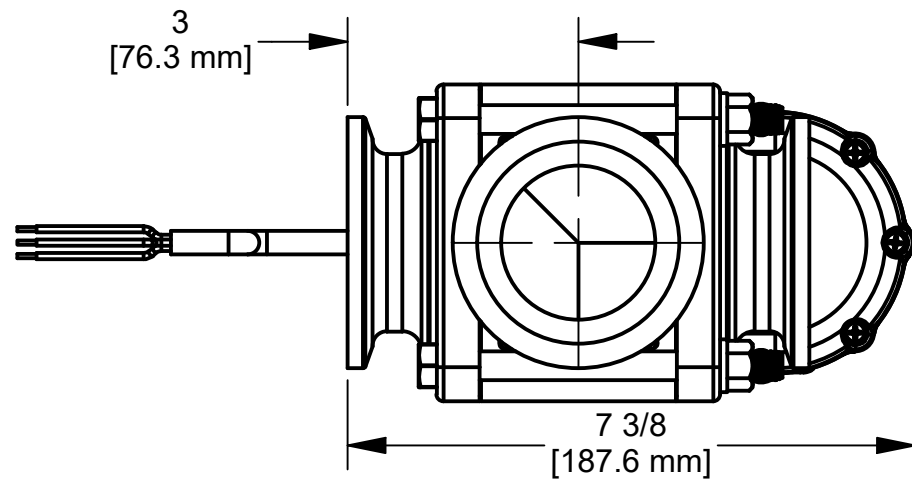
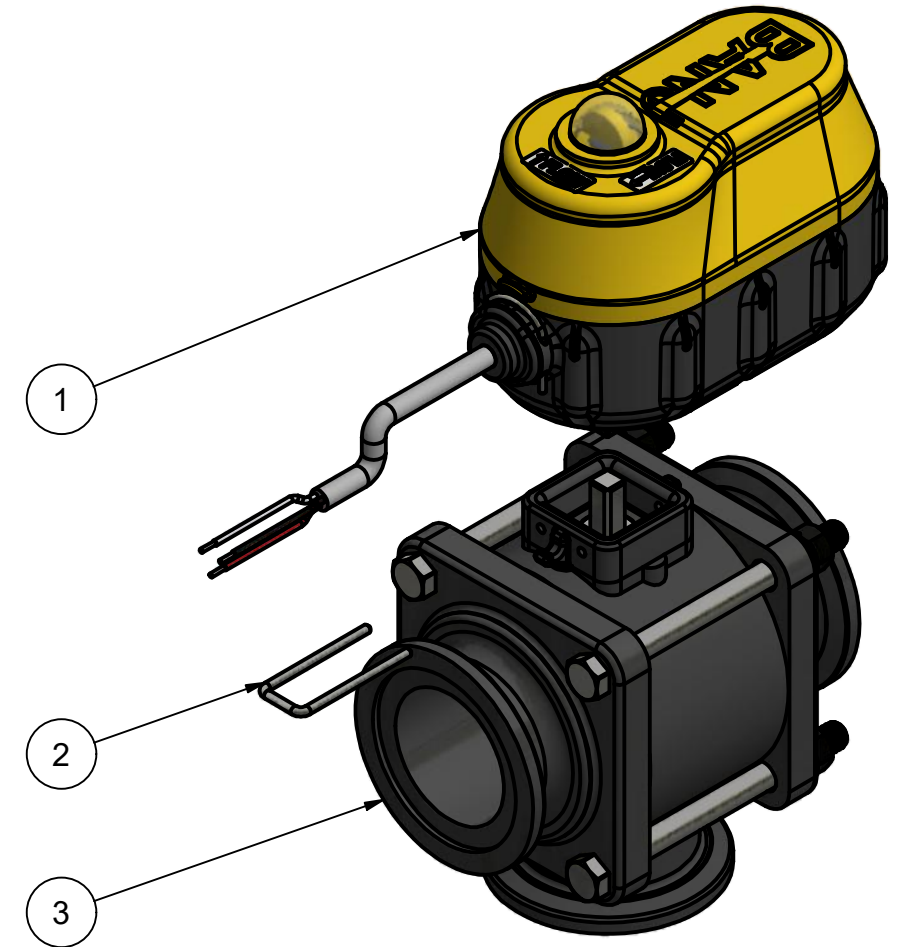
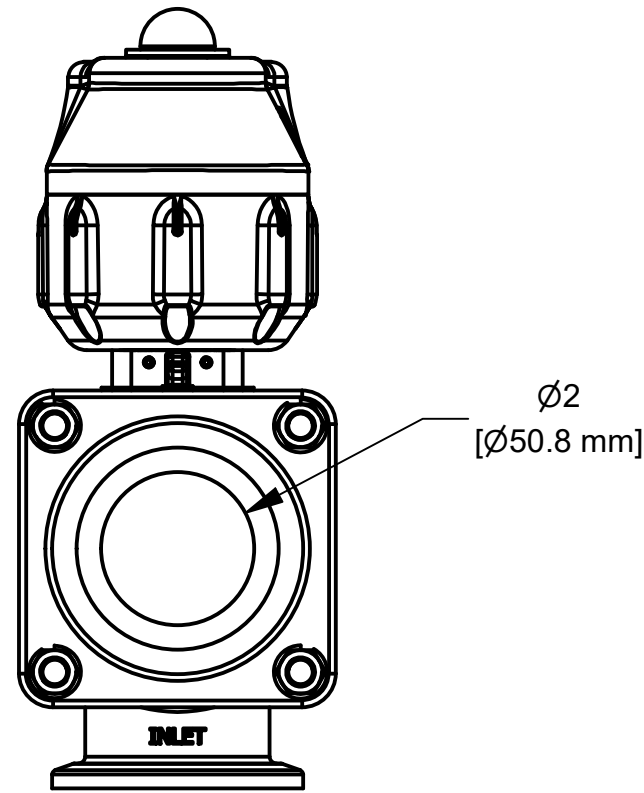
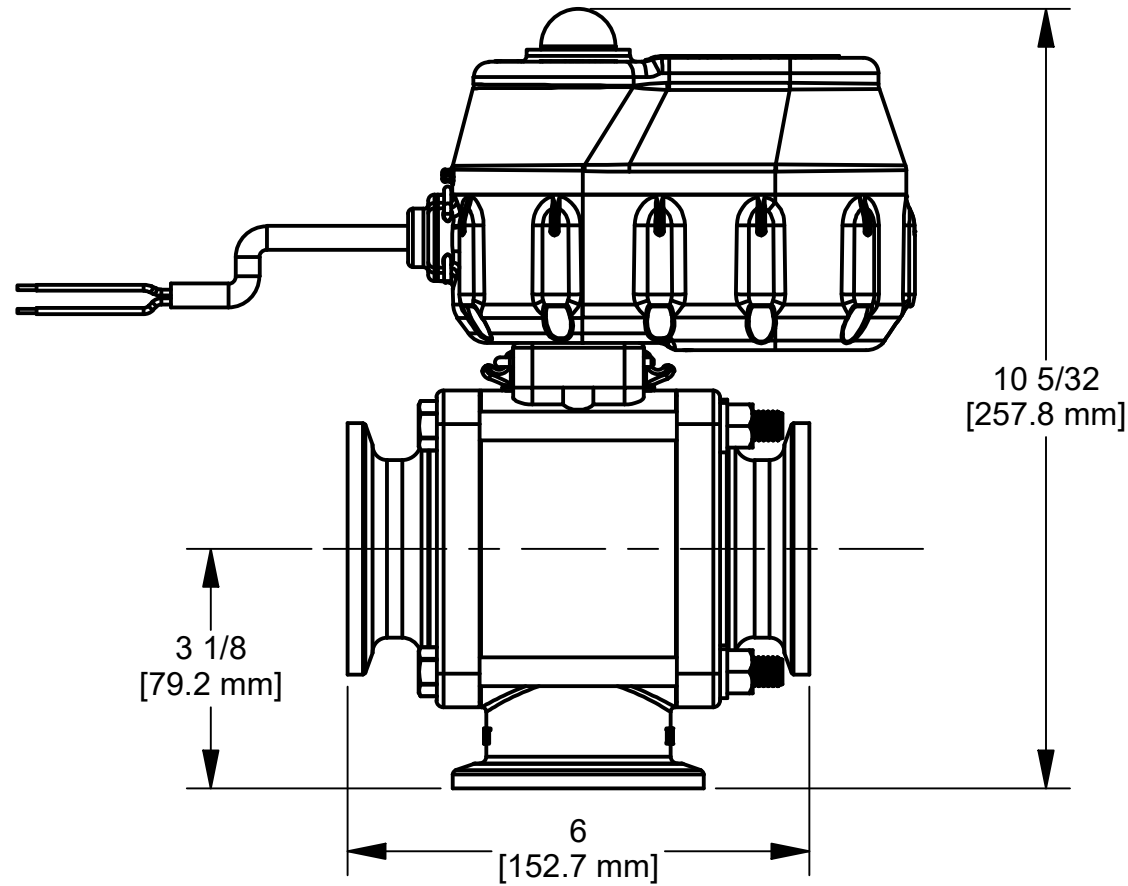


WIRING:
 RED = +24VDC
 BLACK = GND
 WHITE = +24VDC (OPEN), 0VDC (CLOSE)

WIRE LENGTH: 18" ± 1"

Parts List			
ITEM	QTY	PART NUMBER	DESCRIPTION
1	1	EP32B10320	EVX ACT 1.5S WWC 3W 24V
2	1	EVP20001	EV U-PIN
3	1	MEVX220BLX	2" FP BL EVX VALVE ONLY



THIS DRAWING AND ALL INFORMATION CONTAINED THEREON ARE THE EXCLUSIVE PROPERTY OF BANJO CORPORATION.

UNLESS SPECIFICALLY NOTED, THIS DRAWING AND ITEMS SHOWN ON THIS DRAWING ARE SUBJECT TO CHANGE AT ANY TIME.

BANJO CORPORATION

BANJO CORPORATION
 150 BANJO DRIVE, CRAWFORDSVILLE, IN 47933
 WEB SITE: WWW.BANJOCORP.COM
 E-MAIL: BANJOSALES@IDEXCORP.COM

DESCRIPTION
 MEVX 2" FP BL 1.5S WWC 3W 24V

PART NUMBER
 MEVX220BL24