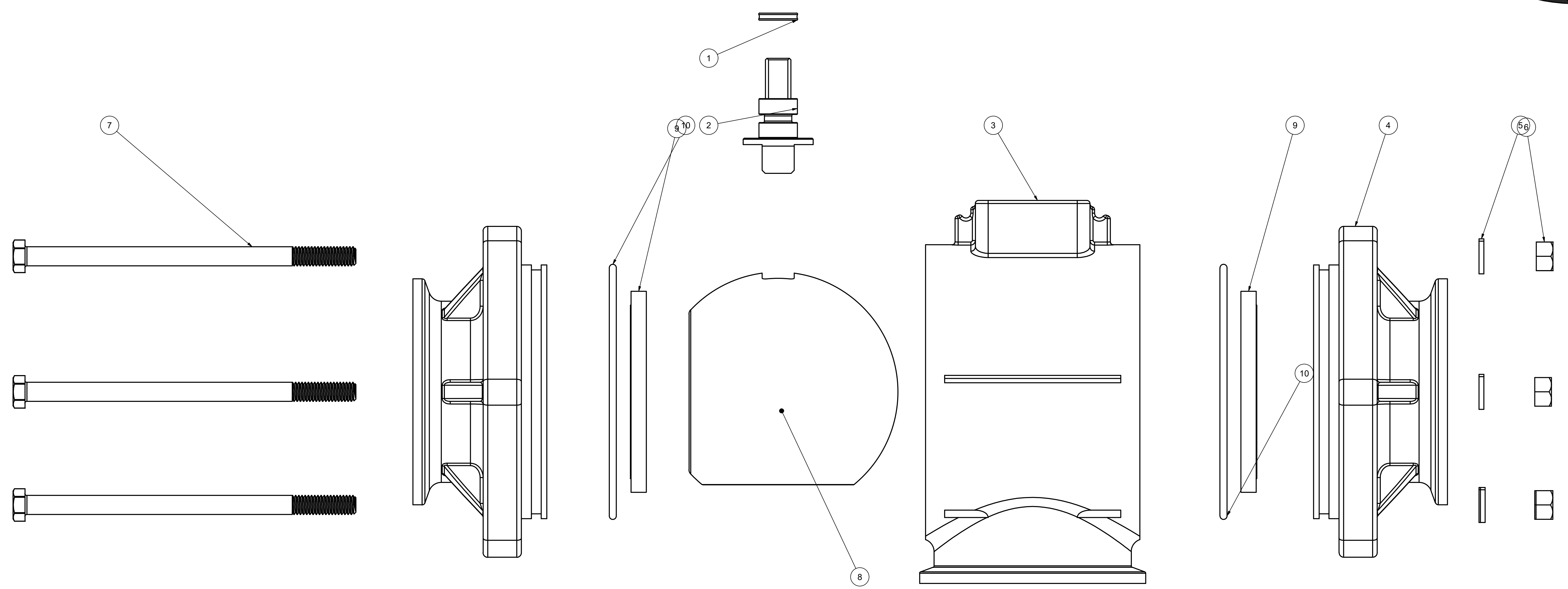
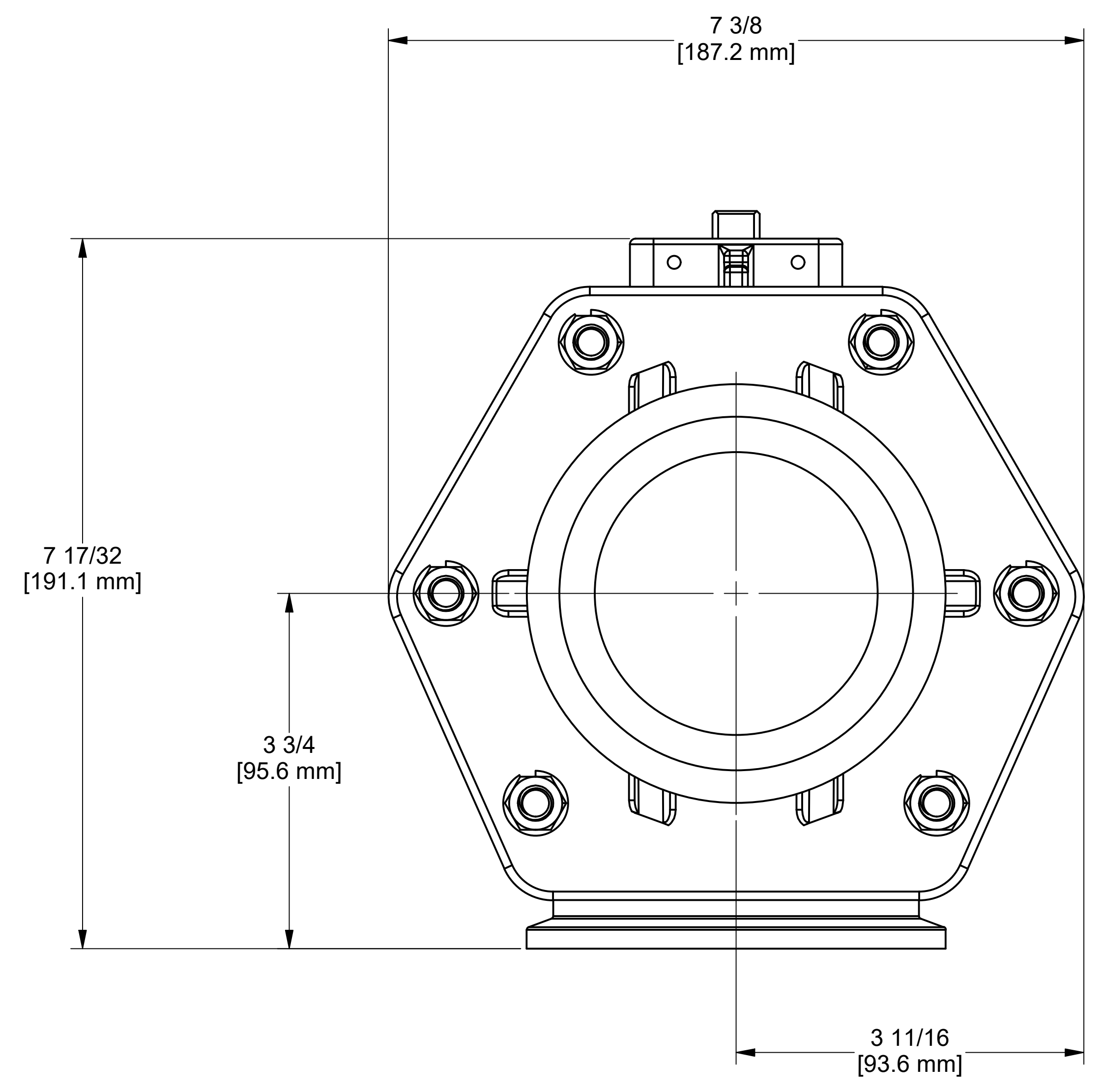
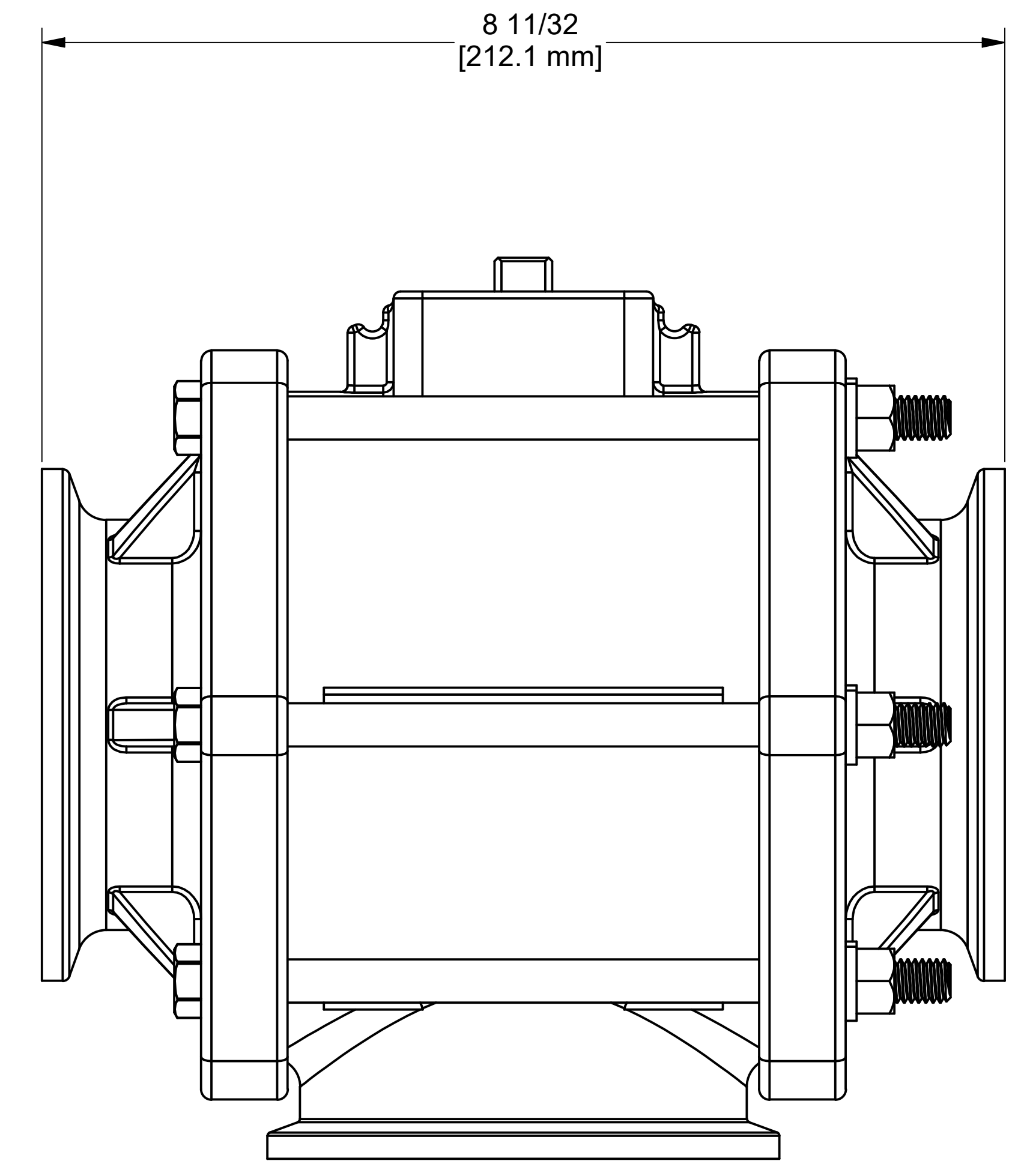


ITEM	QTY	PART NUMBER	PARTS LIST	DESCRIPTION
1	1	AQ206V	#206 QUAD RING, FKM	
2	1	EVP30251	EVX VALVE SS STEM 3" BOLTED	
3	1	MEVX35254BL	3" FP EVX BL BODY	
4	2	MV35278	3" FP MANIFOLD ENDPLATE, MACHINED	
5	6	V20018	3/8" LOCKWASHER	
6	6	V20019	3/8" HEX NUT	
7	6	V35018	3/8"-16 x 6.5" HHCS, 18-8SS	
8	1	V35255BLSS	3" BL SS BALL	
9	2	V35258A	3" FP Ball Seat	
10	2	V35264BL	AS568A -248 O-RING, FKM, BROWN	



ASSEMBLY SPECS:
BODY BOLT TIGHTENING TORQUE: 75-100 IN-LB



THIS DRAWING AND ALL INFORMATION CONTAINED THEREON ARE THE EXCLUSIVE PROPERTY OF BANJO CORPORATION.

BANJO CORPORATION
150 BANJO DRIVE, CRAWFORDSVILLE, IN 47933
WEB SITE: WWW.BANJOCORP.COM
E-MAIL: BANJOSALES@IDEXCORP.COM

UNLESS SPECIFICALLY NOTED, THIS DRAWING AND ITEMS SHOWN ON THIS DRAWING ARE SUBJECT TO CHANGE AT ANY TIME.

DESCRIPTION
3" FP BL MANIFOLD VALVE ONLY
PART NUMBER
MEVX300BLX