

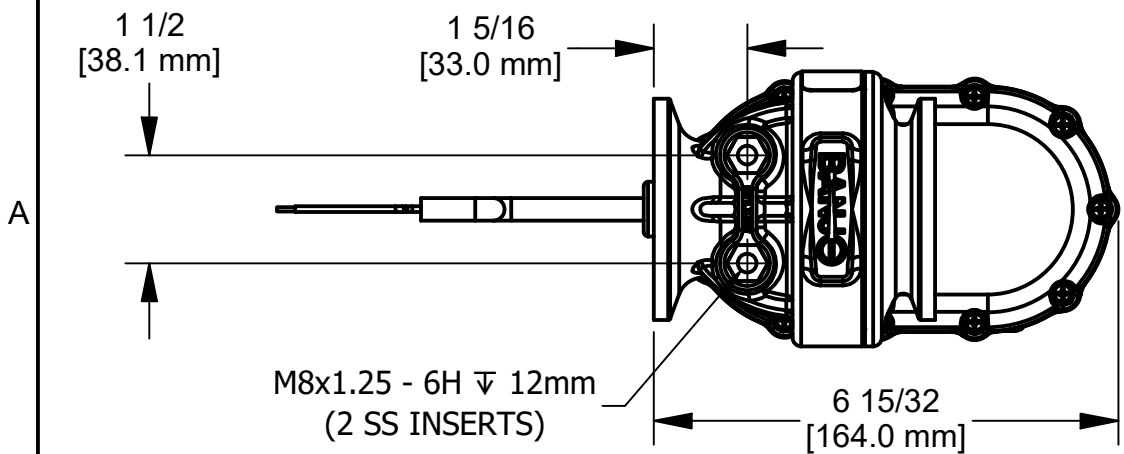
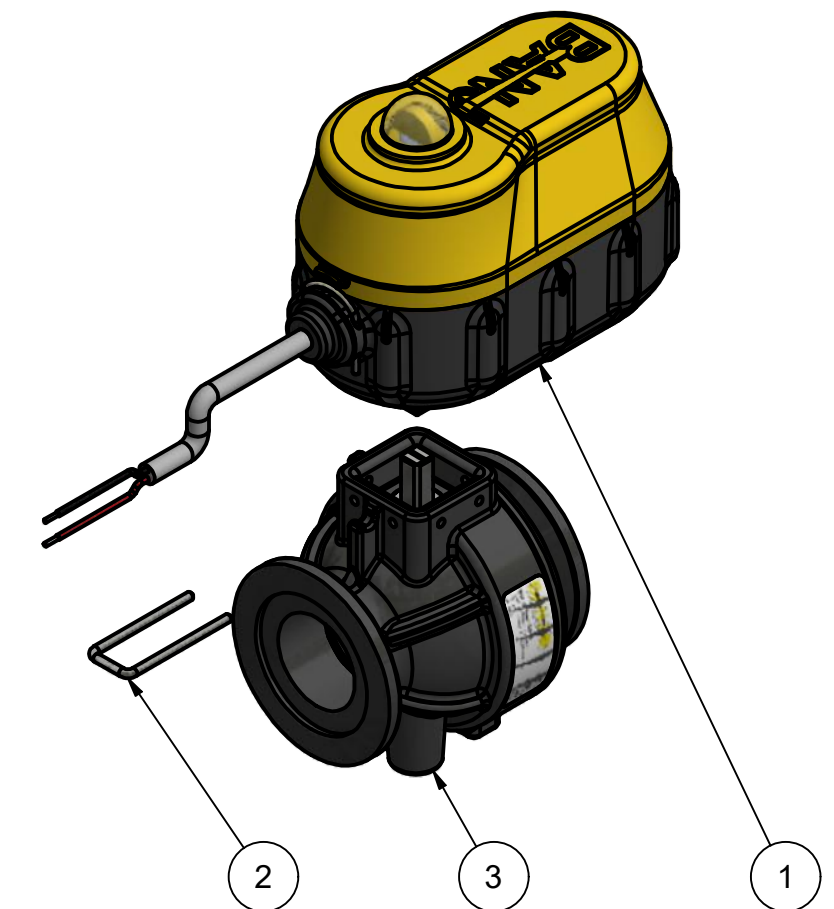
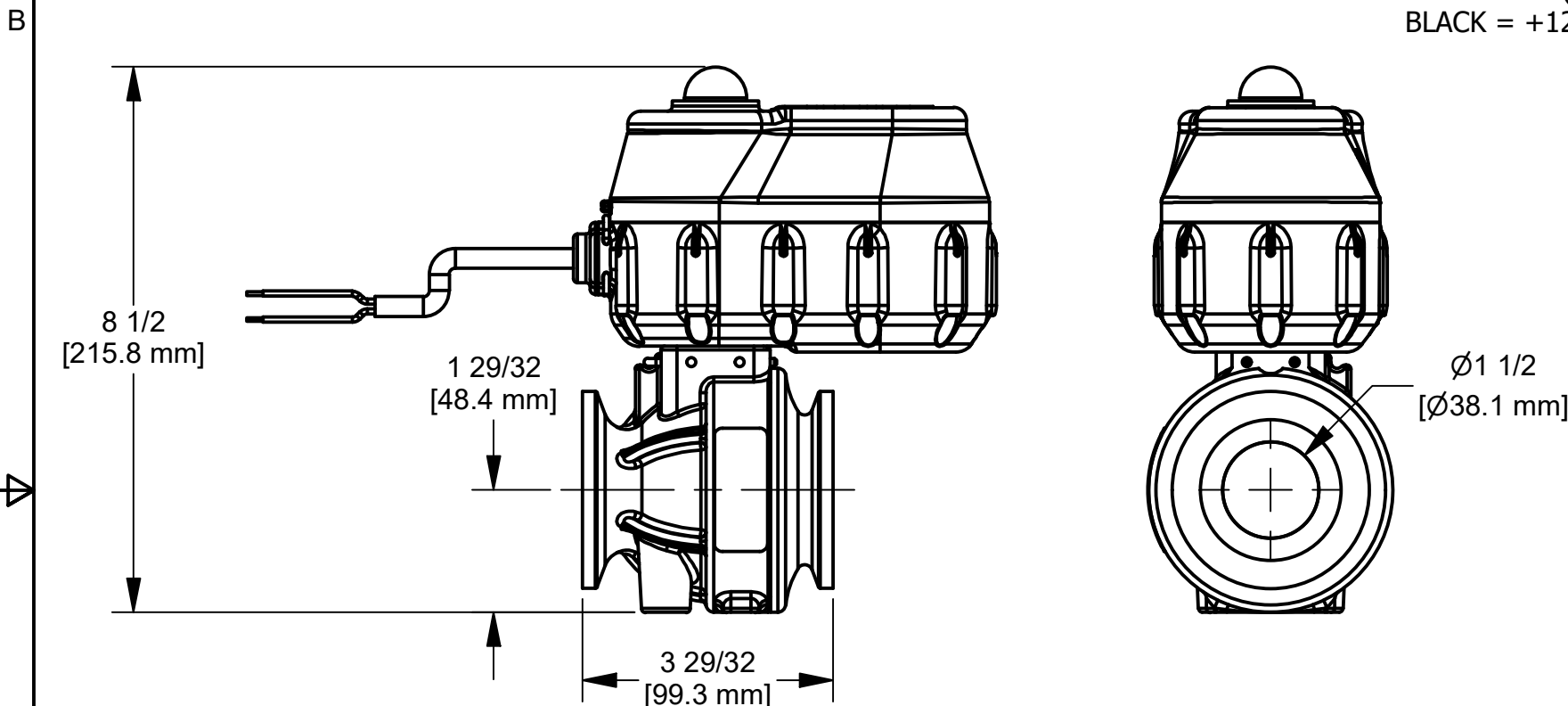
NOTES:

CABLE LENGTH: 18" ± 1" FROM HOUSING.

WIRING:

- RED = +12VDC (OPEN)
- BLACK = GND (OPEN)
- RED = GND (CLOSE)
- BLACK = +12VDC (CLOSE)

| Parts List | | | |
|------------|-----|-------------|---------------------------|
| ITEM | QTY | PART NUMBER | DESCRIPTION |
| 1 | 1 | EP31C02210 | EVX ACT 4S 2W REG |
| 2 | 1 | EVP20001 | EV U-PIN |
| 3 | 1 | MEVX200HX | MEVX 2" STUBBY VALVE ONLY |



THIS DRAWING AND ALL INFORMATION CONTAINED THEREON ARE THE EXCLUSIVE PROPERTY OF BANJO CORPORATION.

UNLESS SPECIFICALLY NOTED, THIS DRAWING AND ITEMS SHOWN ON THIS DRAWING ARE SUBJECT TO CHANGE AT ANY TIME.



BANJO CORPORATION

150 BANJO DRIVE, CRAWFORDSVILLE, IN 47933
 WEB SITE: WWW.BANJOCORP.COM
 E-MAIL: BANJOSALES@IDEXCORP.COM

| | |
|-------------|-------------------|
| DESCRIPTION | MEVX 2" 4S 2W REG |
| PART NUMBER | MEVXR2W200 |