

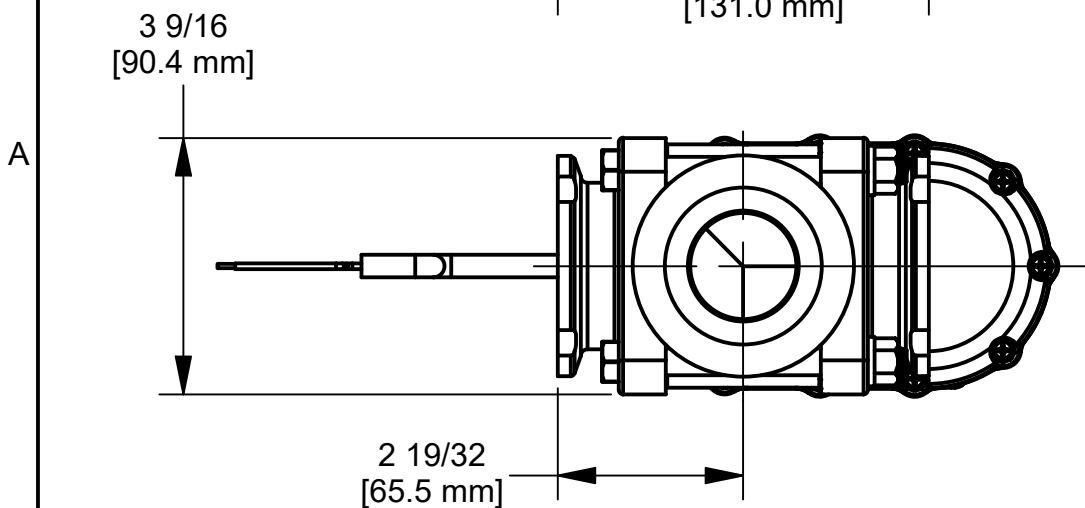
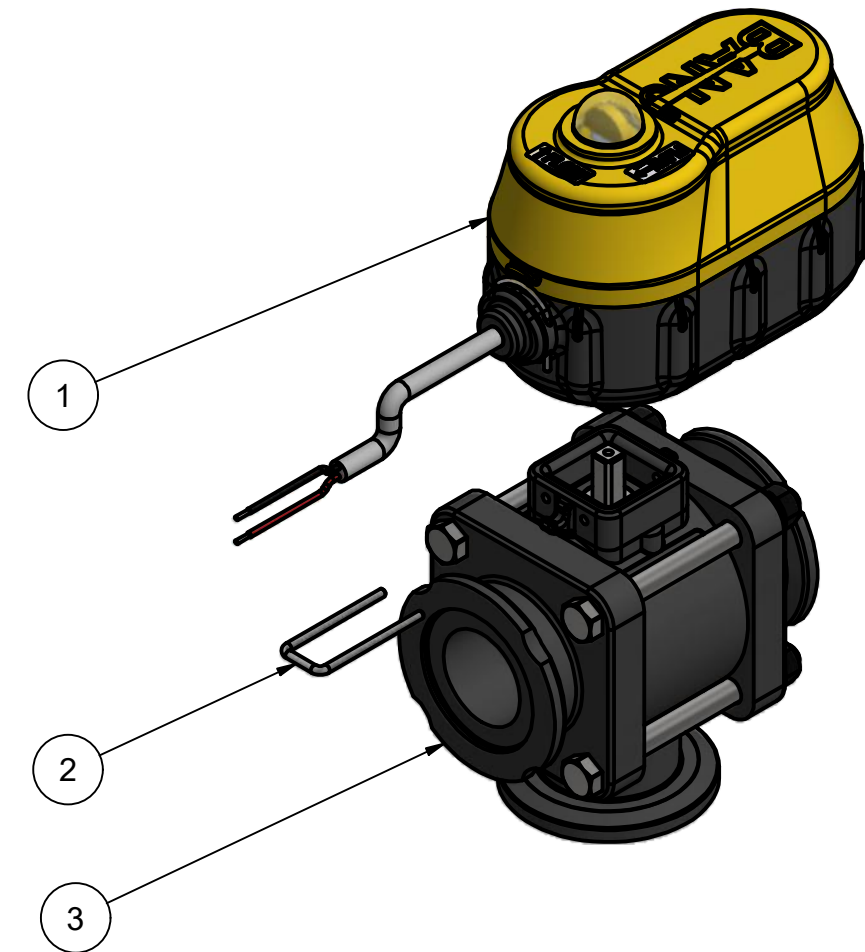
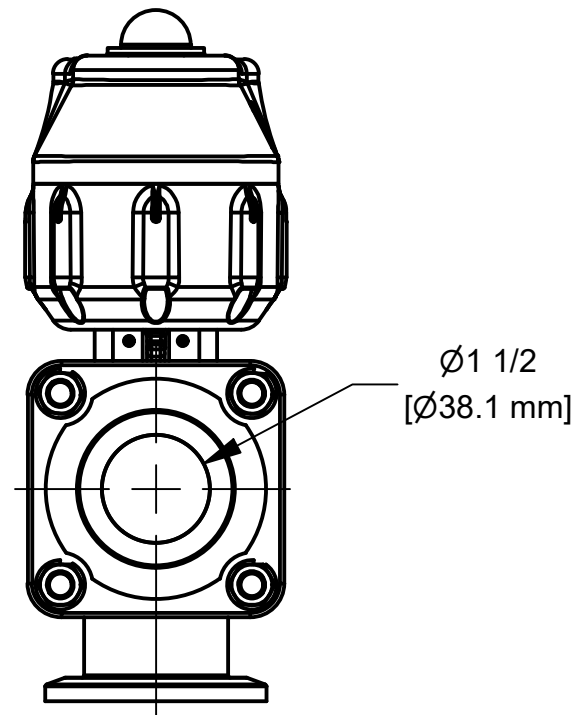
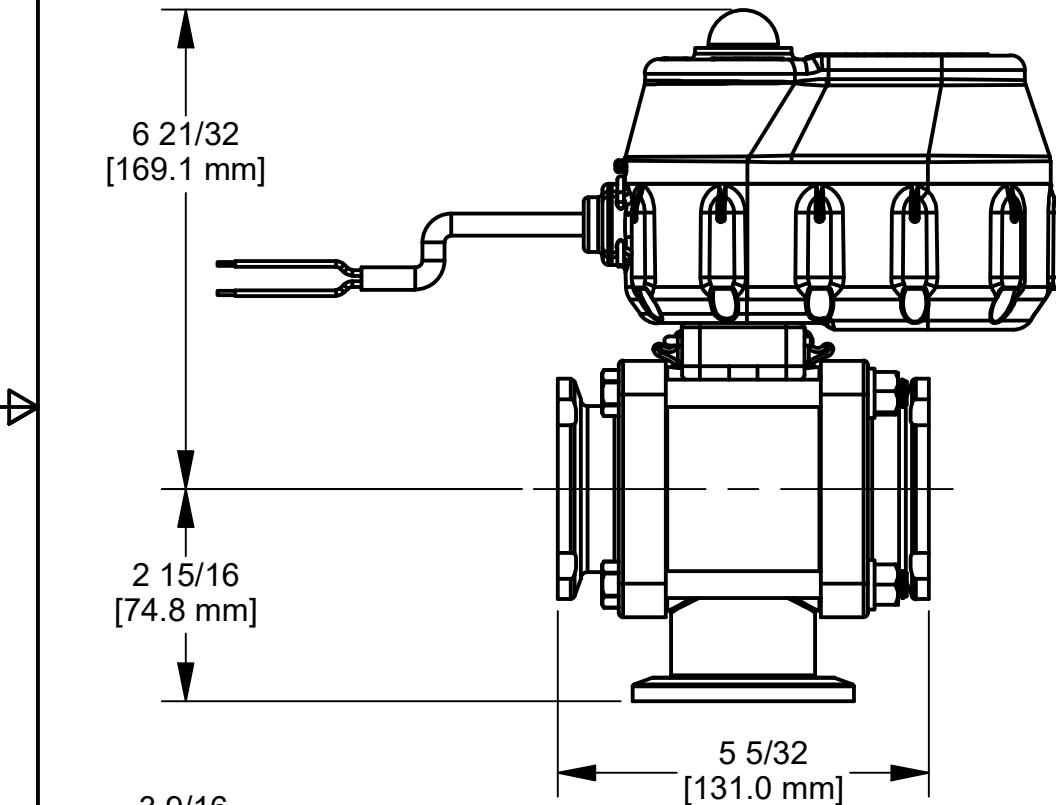
NOTES:

CABLE LENGTH: 18" ± 1" FROM HOUSING.

WIRING:

RED = +12VDC (OPEN)
 BLACK = GND (OPEN)
 RED = GND (CLOSE)
 BLACK = +12VDC (CLOSE)

Parts List			
ITEM	QTY	PART NUMBER	DESCRIPTION
1	1	EP31D02210	EVX ACT 7S 2W REG
2	1	EVP20001	EV U-PIN
3	1	MEVX200BLX	2" SP EVX BL MANIFOLD VALVE



THIS DRAWING AND ALL INFORMATION CONTAINED THEREON ARE THE EXCLUSIVE PROPERTY OF BANJO CORPORATION.

UNLESS SPECIFICALLY NOTED, THIS DRAWING AND ITEMS SHOWN ON THIS DRAWING ARE SUBJECT TO CHANGE AT ANY TIME.



BANJO CORPORATION
 150 BANJO DRIVE, CRAWFORDSVILLE, IN 47933
 WEB SITE: WWW.BANJOCORP.COM
 E-MAIL: BANJOSALES@IDEXCORP.COM

DESCRIPTION
 MEVX 2"SP BL 6S 2W REG

PART NUMBER
 MEVXR2W200BLA