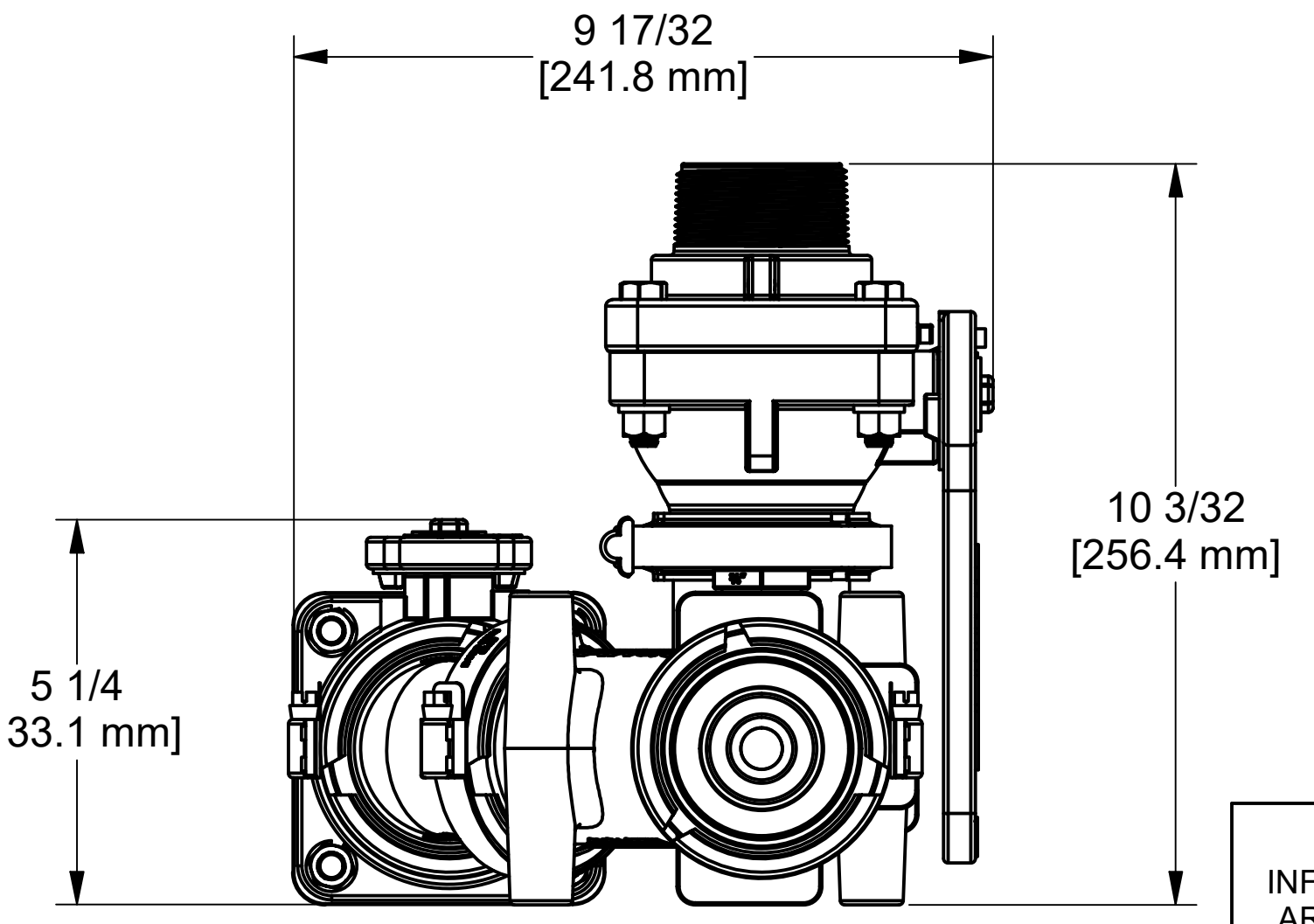
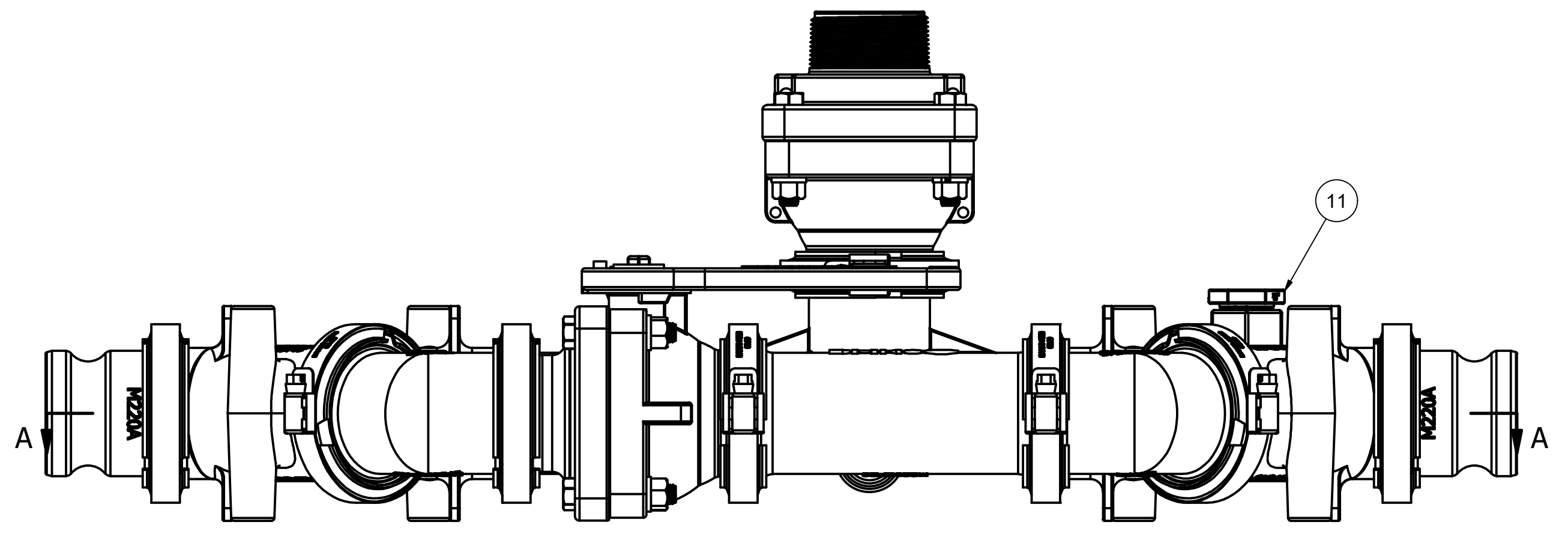
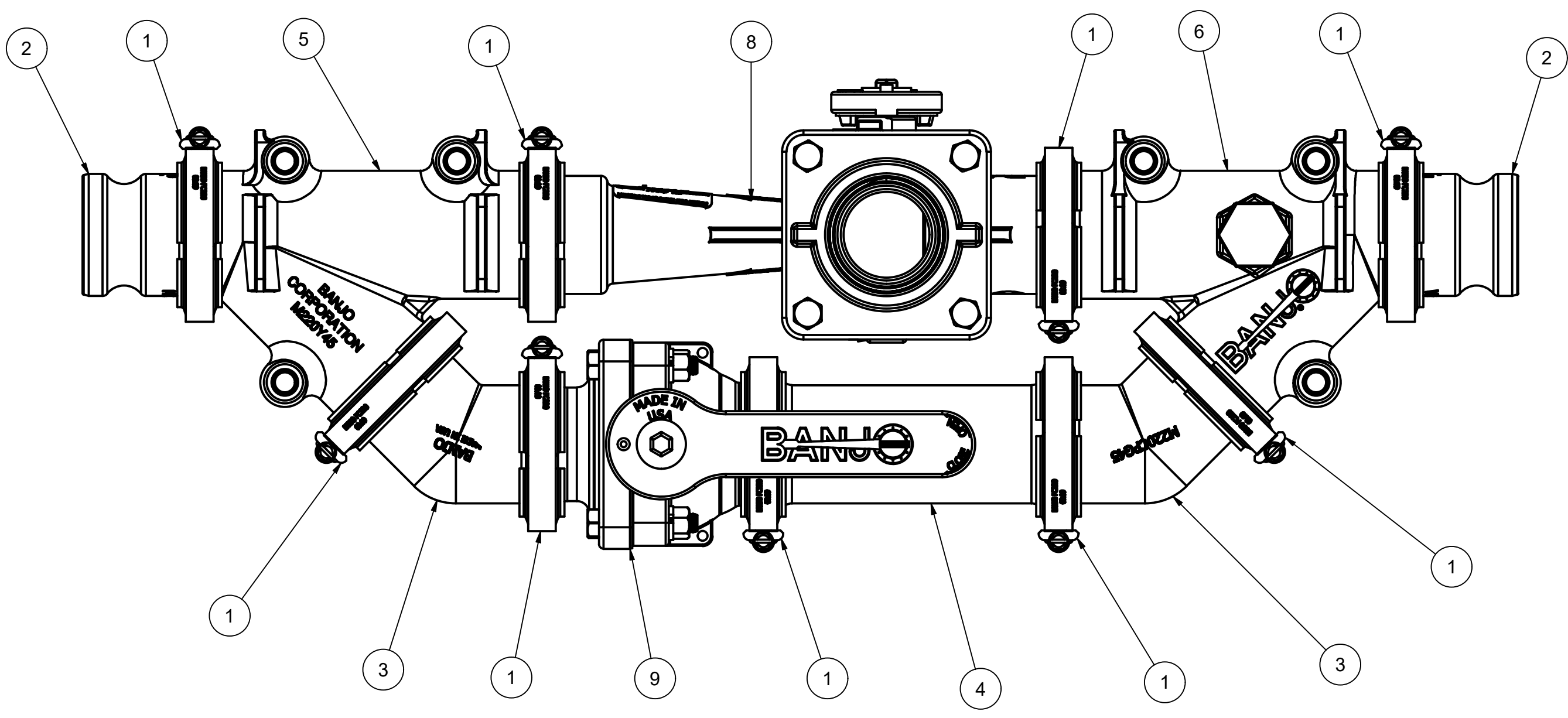
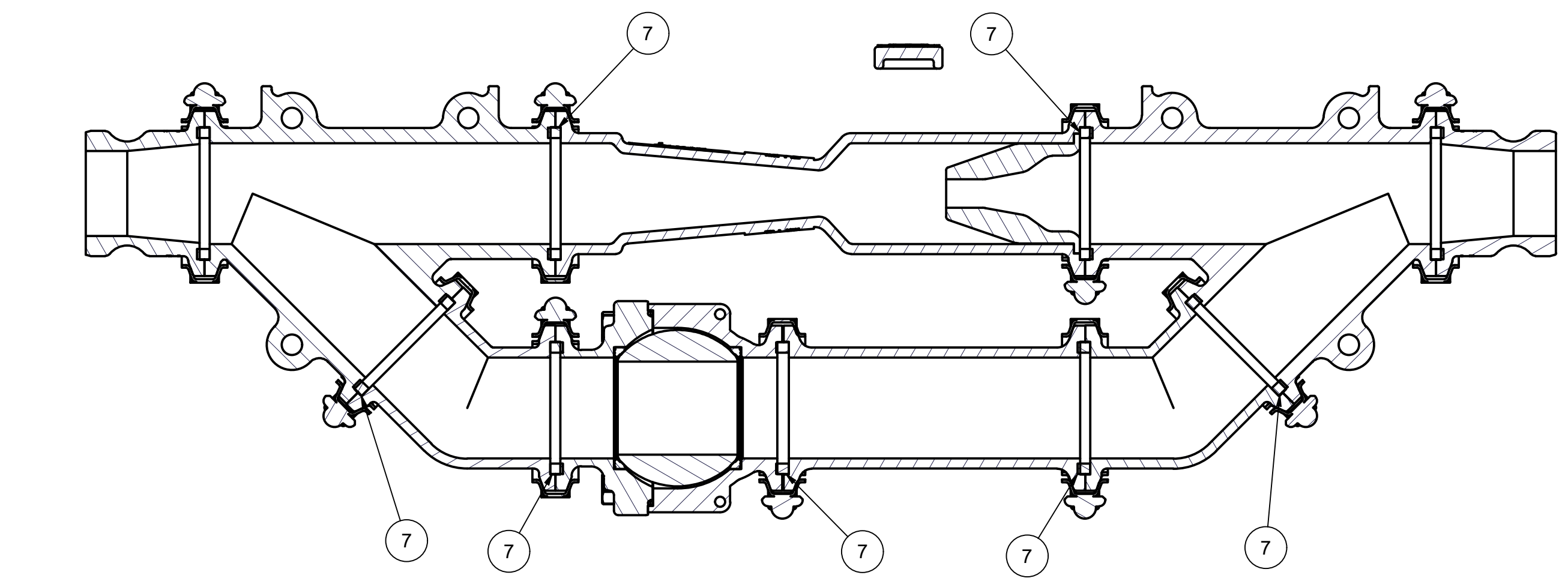
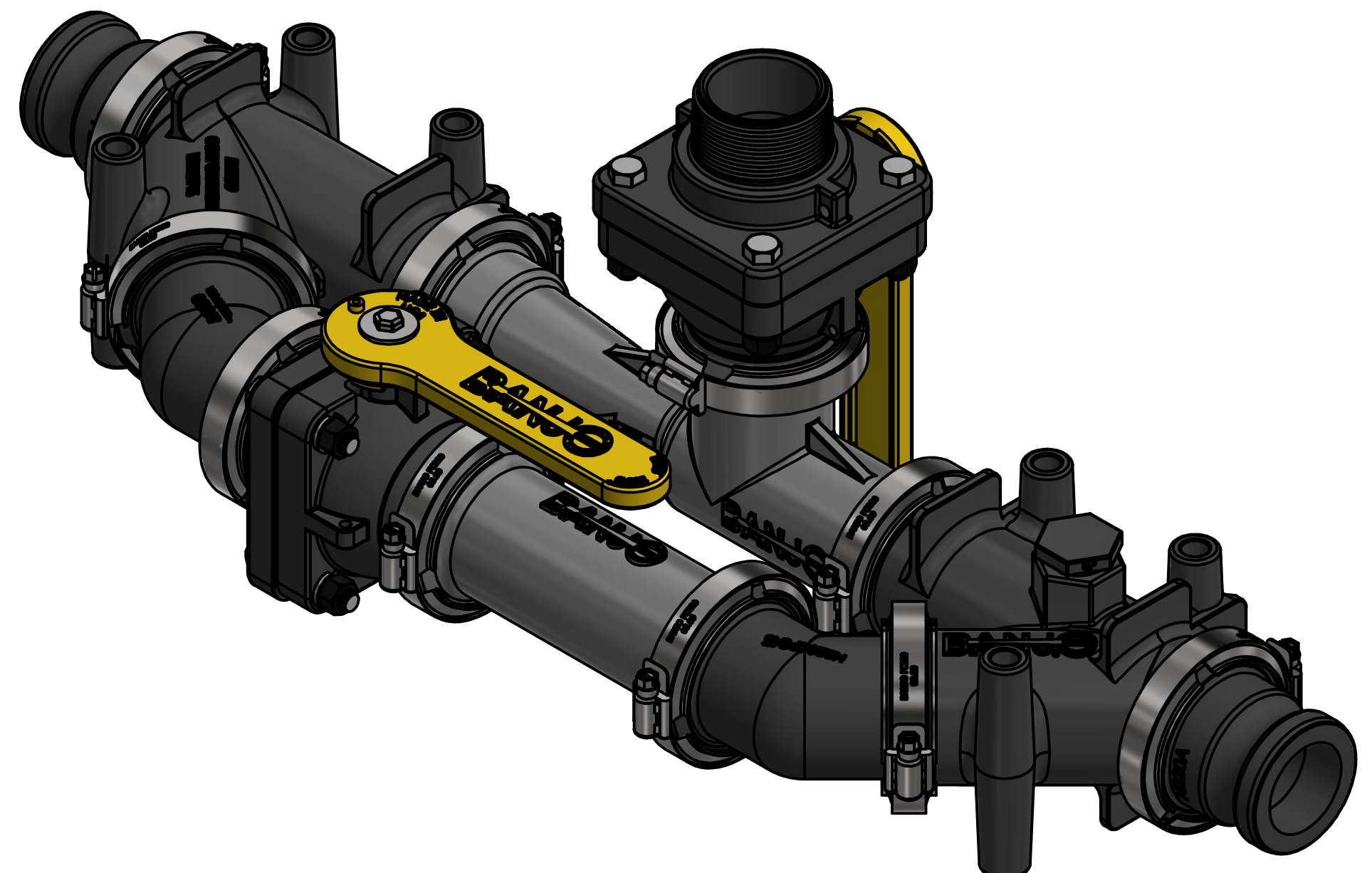


PARTS LIST			
ITEM	QTY	PART NUMBER	DESCRIPTION
1	10	FC220	2" FP HI TORQUE CLAMP
2	2	M220A	2" Full Port Manifold Flange X 2" Male Coupler
3	2	M220CPG45	2" FP MANIFOLD 45° COUPLING
4	1	M220CPG6	2" FP MANIFOLD COUPLING
5	1	M220Y45	2" FP Manifold Wye 45
6	1	M220YG45	2" FP 45° Y SWEEP MANIFOLD W/ 3/4" NPT PORT
7	10	M221G	2" FP Manifold Gasket w/ Rib
8	1	MHV220A	2" FP VENTURI ASSY
9	1	MVS220CF	2" Stubby Valve
10	1	MVSMT220FP	2" FP MNFLD X 2" MALE NPT STUBBY VALVE
11	1	PLUG075	3/4" PIPE PLUG

KIT CONTAINS ALL ITEMS SHOWN.
ASSEMBLY IS REQUIRED.



THIS DRAWING AND ALL INFORMATION CONTAINED THEREON ARE THE EXCLUSIVE PROPERTY OF BANJO CORPORATION.
UNLESS SPECIFICALLY NOTED, THIS DRAWING AND ITEMS SHOWN ON THIS DRAWING ARE SUBJECT TO CHANGE AT ANY TIME.



BANJO CORPORATION
150 BANJO DRIVE, CRAWFORDSVILLE, IN 47933
WEB SITE: WWW.BANJO.CORP.COM
E-MAIL: BANJOSALES@DEXCORP.COM

DESCRIPTION
2" FP INDUCTOR ASSY A X A KIT

PART NUMBER
MIS220AAK