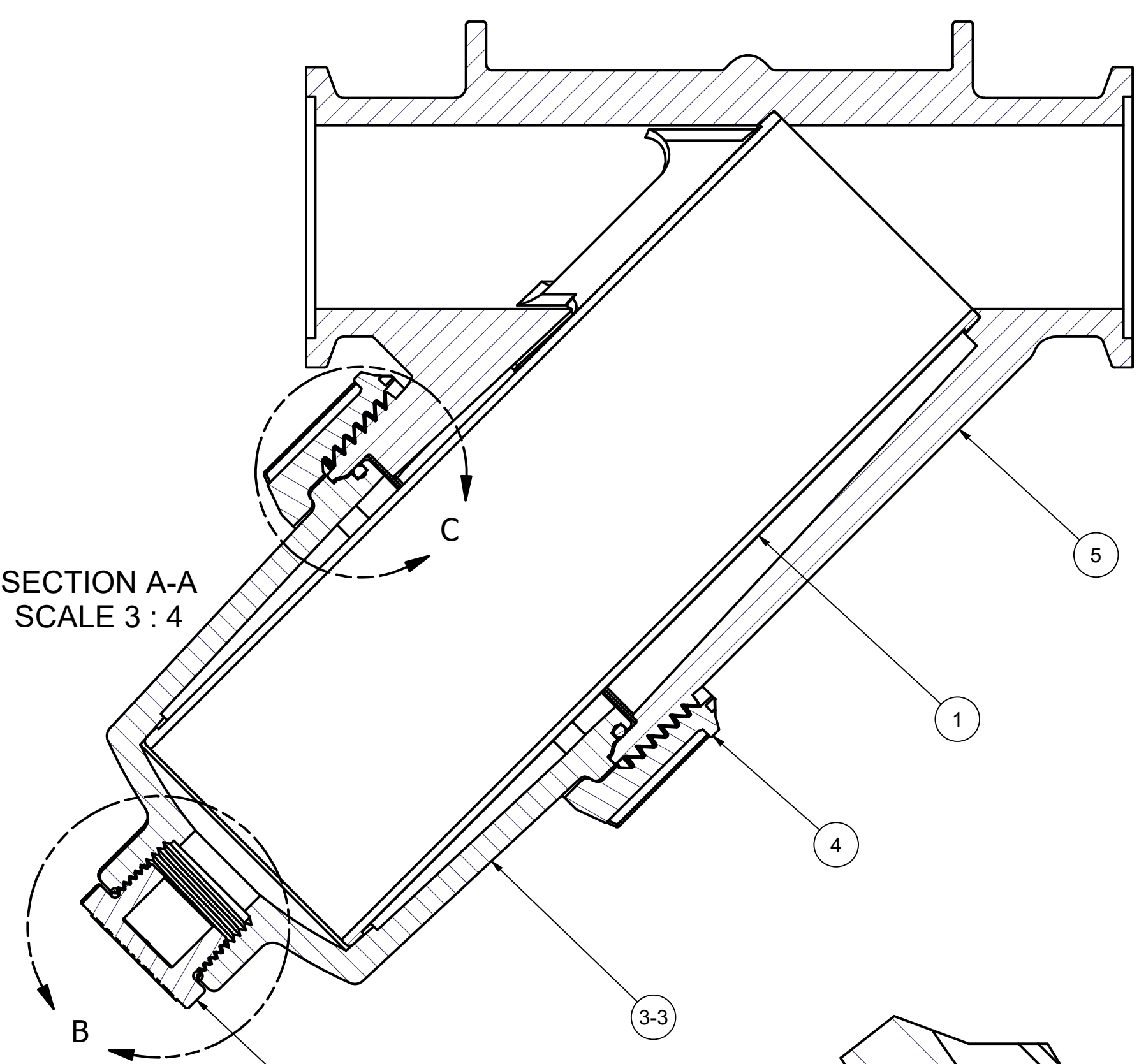
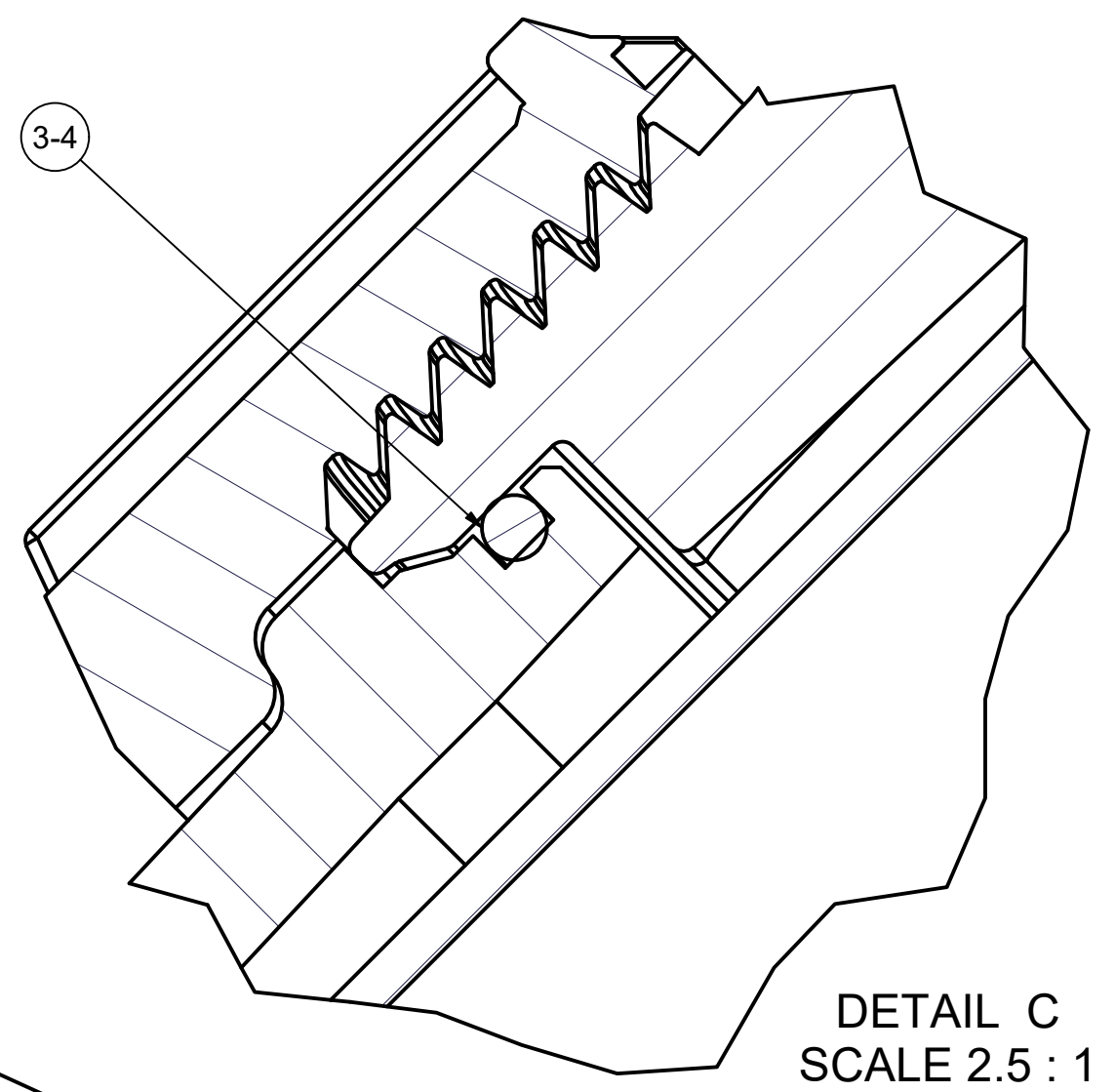


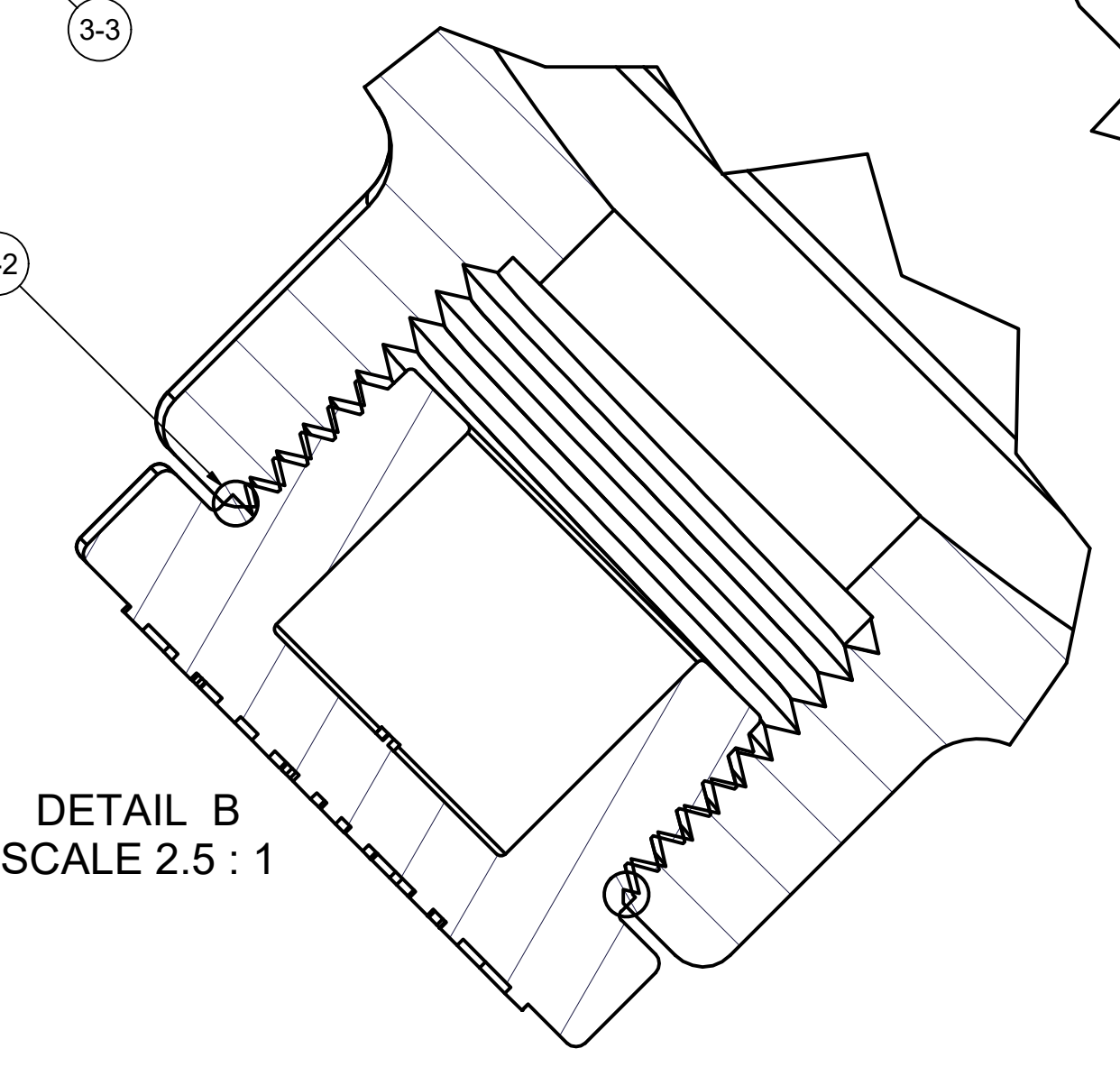
Parts List				
ITEM	QTY	PART NUMBER	DESCRIPTION	
1	1	LST216SS	2" LST SCREEN - 16 MESH	
3	1	MLS220C1V	MLS220 FKM Cap Assembly	
3-1	1	LSQ200-PL	1" NPT LINE STRAINER PLUG	
3-2	1	LSQ200-RV	AS568A -123 O-RING, FKM, BROWN	
3-3	1	MLS220C1X	2" FP MLS CAP	
3-4	1	MLS220G1V	AS568A -241 O-RING, FKM, BROWN	
4	1	MLS220R1	2" FP LS RETAINING RING	
5	1	MLS222B	MLS222 BODY WITH RIBS	



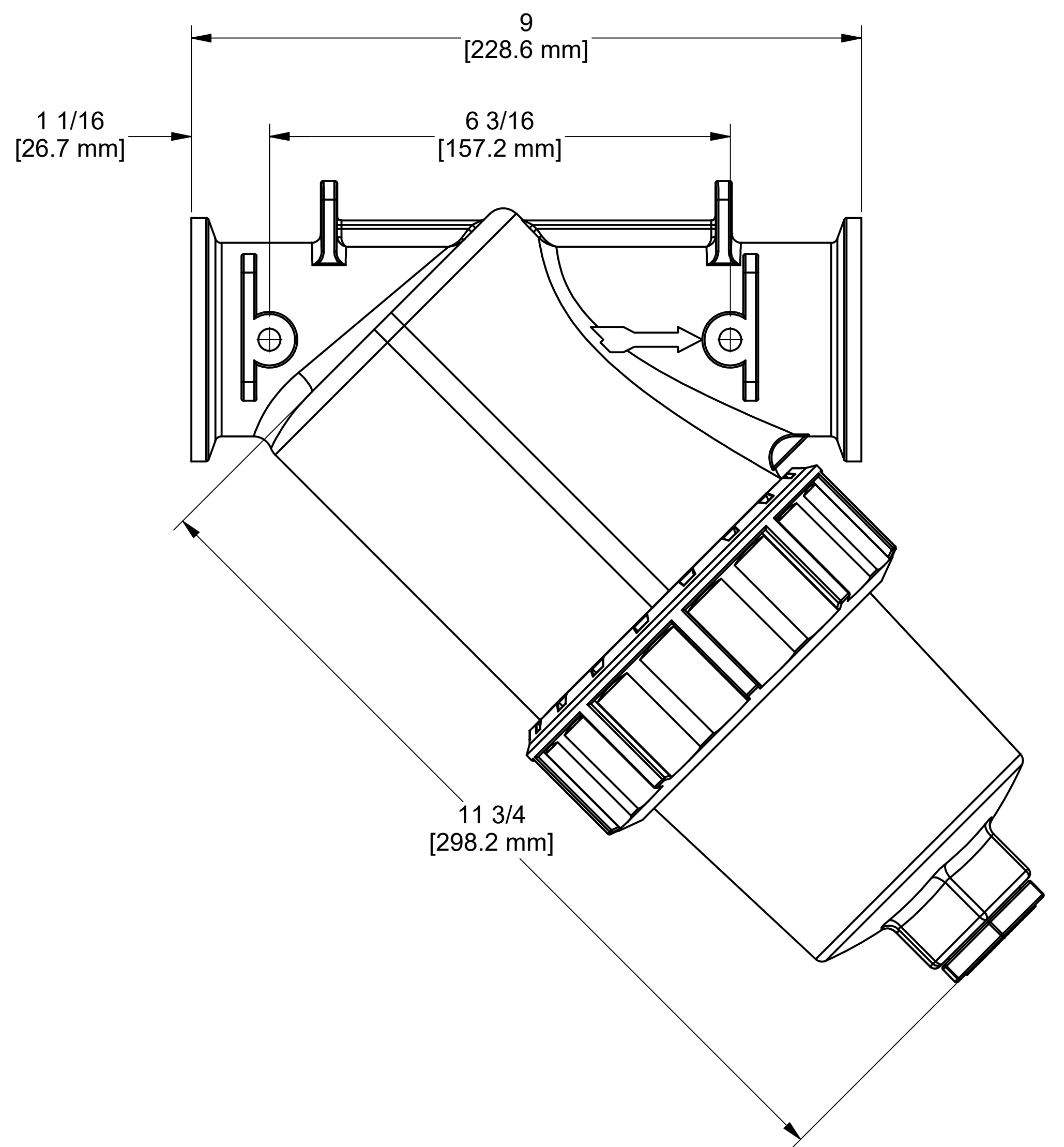
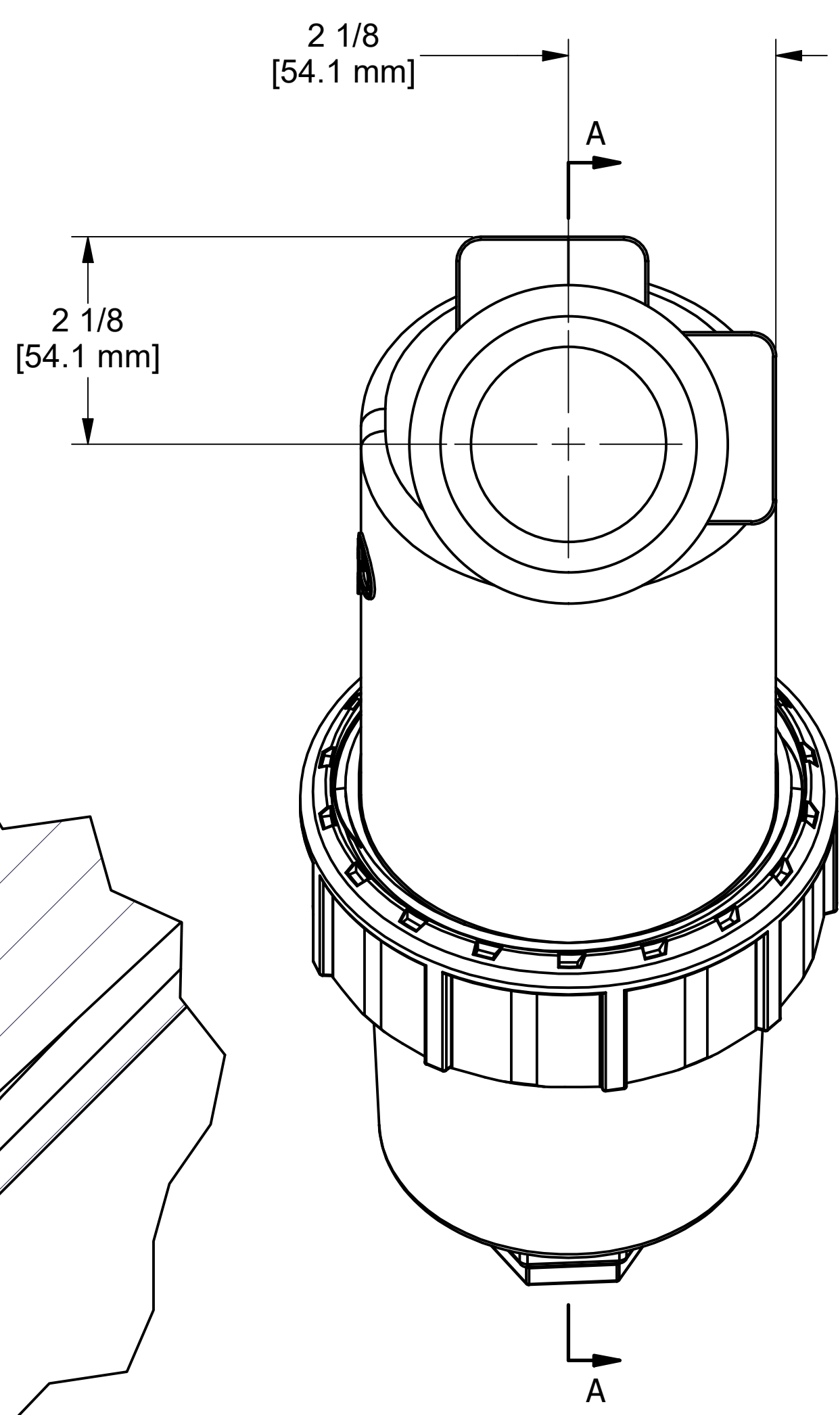
SECTION A-A  
SCALE 3 : 4



DETAIL C  
SCALE 2.5 : 1



DETAIL B  
SCALE 2.5 : 1



THIS DRAWING AND ALL INFORMATION CONTAINED THEREON ARE THE EXCLUSIVE PROPERTY OF BANJO CORPORATION.  
UNLESS SPECIFICALLY NOTED, THIS DRAWING AND ITEMS SHOWN ON THIS DRAWING ARE SUBJECT TO CHANGE AT ANY TIME.

BANJO CORPORATION  
150 BANJO DRIVE, CRAWFORDSVILLE, IN 47933  
WEB SITE: WWW.BANJO.CORP.COM  
E-MAIL: BANJOSALES@DEXCORP.COM

DESCRIPTION  
**2" FP MANIFOLD LINE STRAINER - 16 MESH-FKM**

PART NUMBER  
**MLS222-16V**