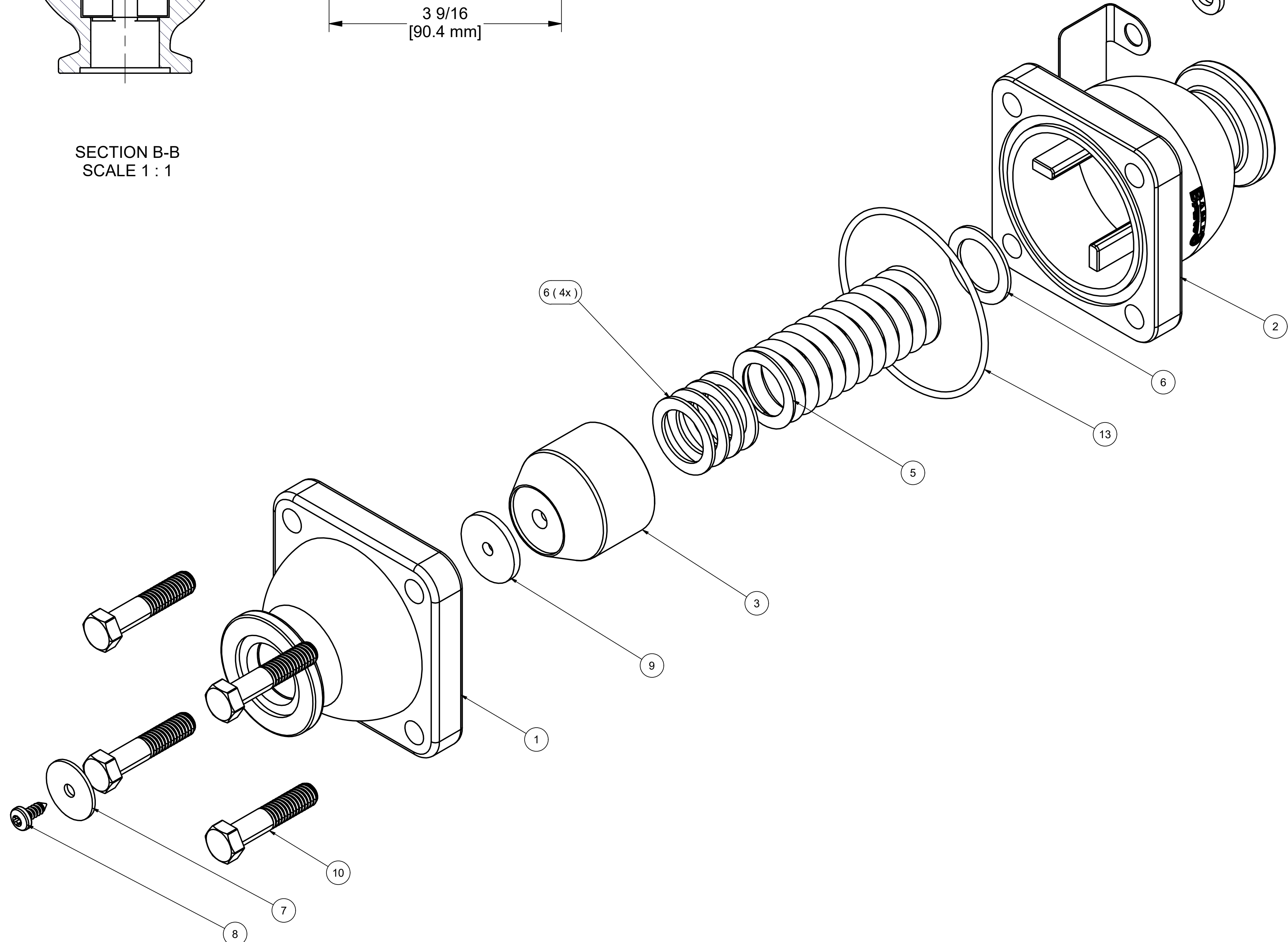
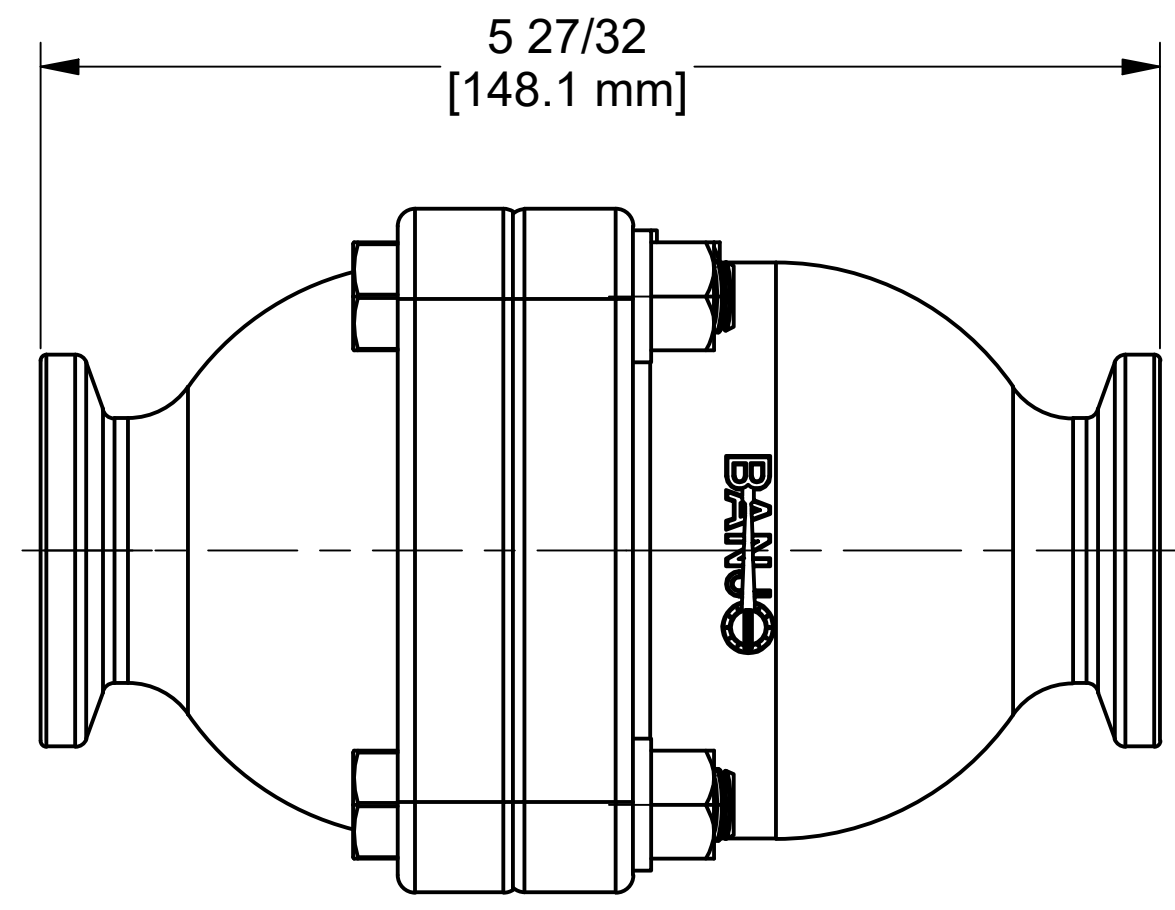
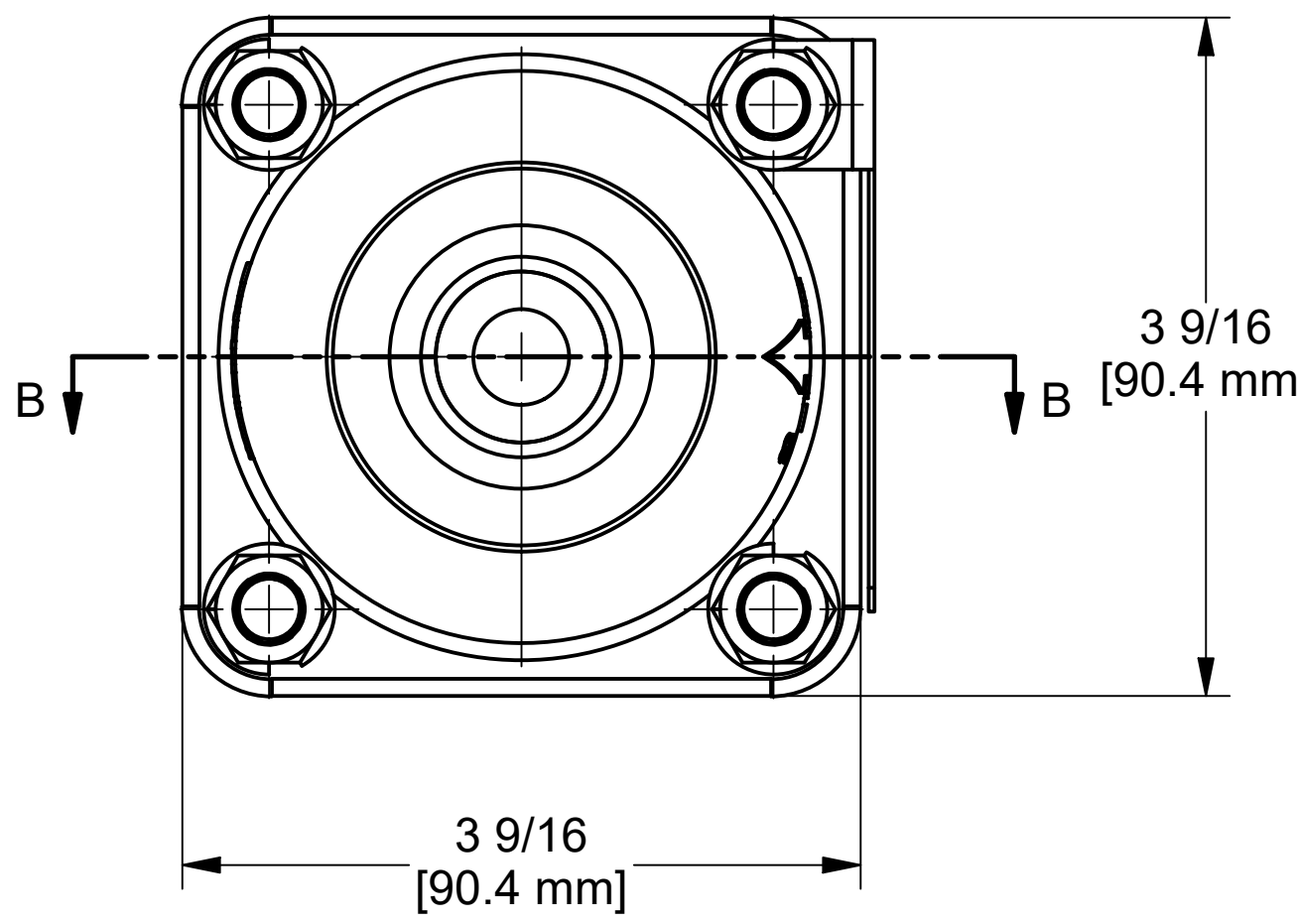
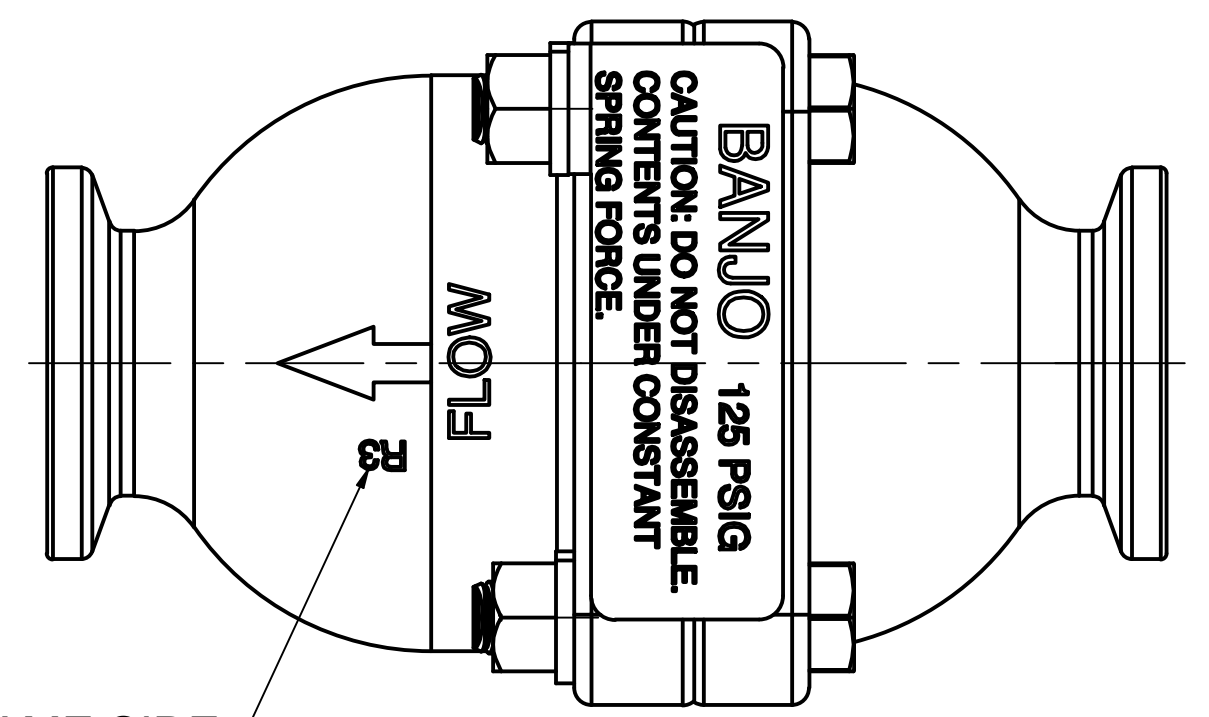
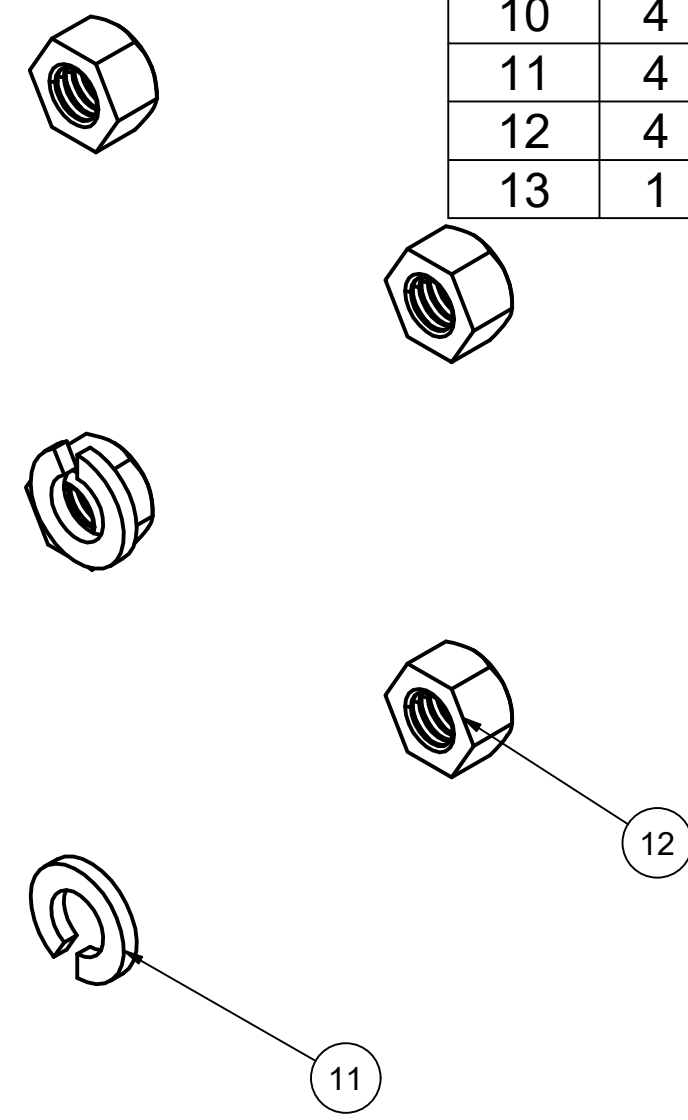


SECTION B-B
SCALE 1:1



PARTS LIST			
ITEM	QTY	PART NUMBER	DESCRIPTION
1	1	MPRV101	POPPET HALF OF PRESSURE RELIEF VALVE, MACHINED
2	1	MPRV103A	SPRING HALF, MPRV, MACHINED
3	1	PRV102A	POPPET FOR PRESSURE RELIEF VALVE, MACHINED
4	1	PRV107T	125 PSI Pressure Label
5	1	PRV108	150 lb Spring for Pressure Relief Valve
6	5	PRV109	SPRING WASHER FOR MPRV100
7	1	PRV110A	RETAINING WASHER
8	1	PRV111A	Poppet Screw #10 x 1/2"
9	1	PRV112	1" PRV POPPET GASKET EPDM
10	4	V20011SS	3/8-16 X 1 3/4" HHCS
11	4	V20018	3/8" LOCKWASHER
12	4	V20019	3/8-16 HEX NUT
13	1	V20264	AS568A -151 O-RING, FKM, BROWN



HOT STAMP "R3" ON SAME SIDE AS METAL PRESSURE LABEL AND/OR STAMP "R3" ON METAL PRESSURE LABEL.



THIS DRAWING AND ALL INFORMATION CONTAINED THEREON ARE THE EXCLUSIVE PROPERTY OF BANJO CORPORATION.
UNLESS SPECIFICALLY NOTED, THIS DRAWING AND ITEMS SHOWN ON THIS DRAWING ARE SUBJECT TO CHANGE AT ANY TIME.

BANJO CORPORATION
150 BANJO DRIVE, CRAWFORDSVILLE, IN 47933
WEB SITE: WWW.BANJO.CORP.COM
E-MAIL: BANJOSALES@DEXCORP.COM

DESCRIPTION
125 PSI PRESSURE RELIEF VALVE

PART NUMBER
MPRV100-125