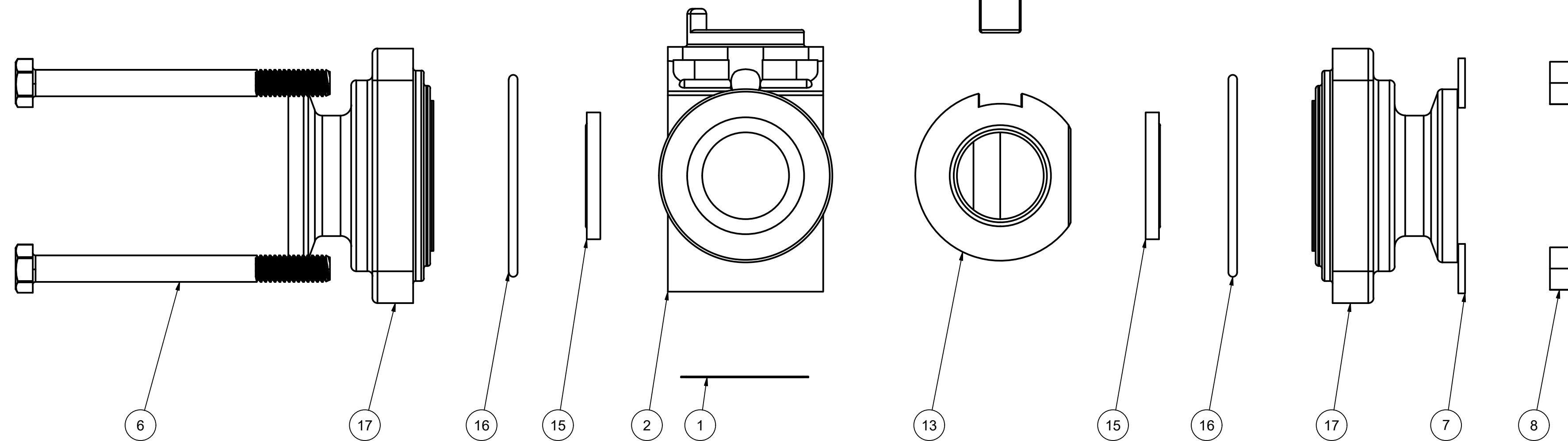
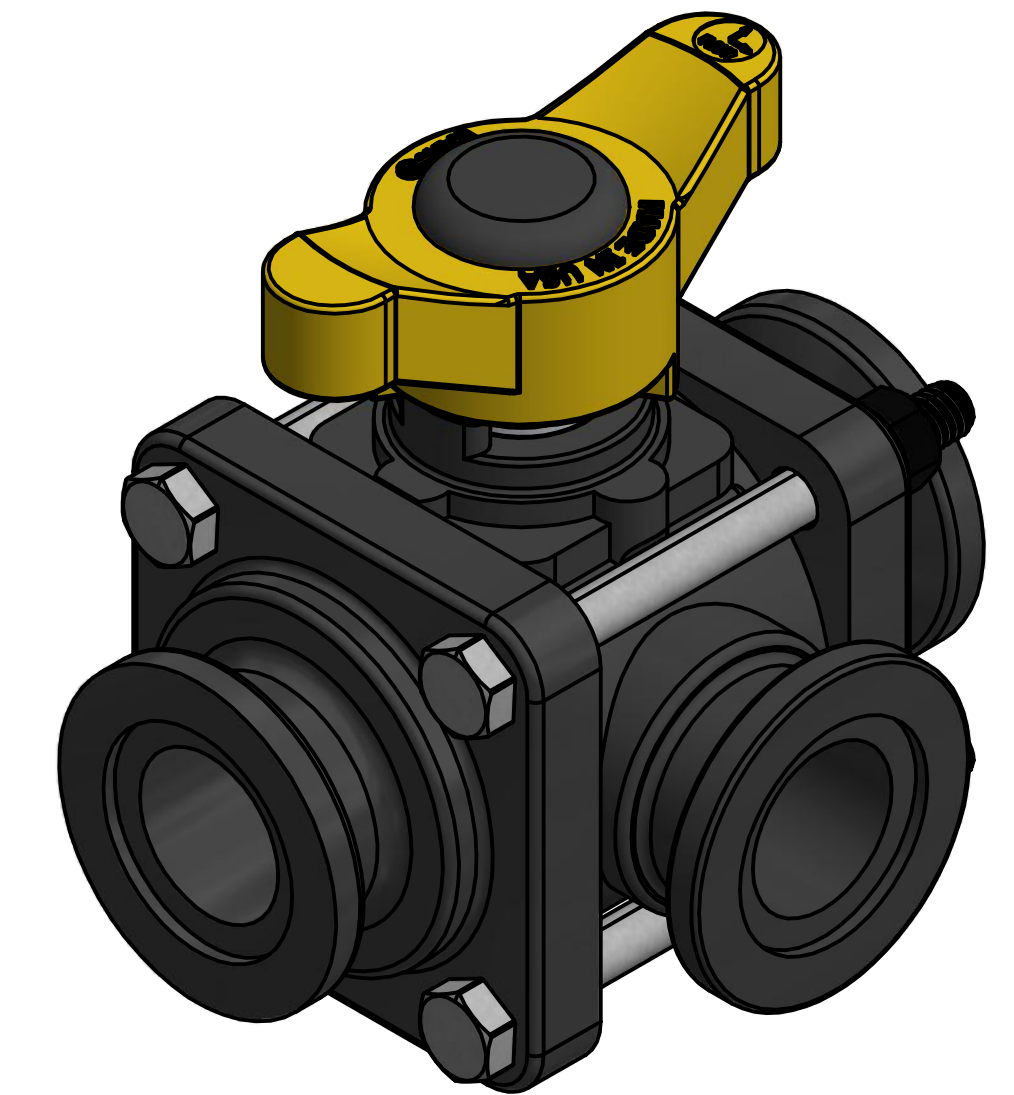


SECTION A-A
SCALE 1 : 1

PARTS LIST			
ITEM	QTY	PART NUMBER	DESCRIPTION
1	1	050DECAL	BANJO LOGO DECAL (N/S)
2	1	MV10354S	1" FP MANIFOLD SL VALVE BODY, MACHINED
3	1	SW10	#10 WASHER
4	1	V07020	#10-24x0.50 HHCS 18-8SS
5	1	V10060	THRUST BEARING
6	4	V10117	5/16 - 18 X 3 1/2" HHCS
7	4	V10118	5/16" LOCKWASHER
8	4	V10119	5/16" HEX NUT
9	1	V10151	1" VALVE STEM
10	1	V10159	STEM BUSHING
11	1	V10163	#113 O-RING, FKM
12	1	V10353TS	1" SIDE LOAD T-HANDLE
13	1	V10355S	1" SIDE LOAD BALL, TUMBLED
14	1	V20353C	1 1/8" CAPLUG
15	2	VE10258A	1" VE SEAT TFM
16	2	VE10264	#139 O-RING, FKM
17	2	VE10278A	1" VE FLANGE ENDPLATE, MACHINED
18	1	VL1018	300 PSI DECAL (N/S)

NOTE:
USE BOX 1002
18 PER BOX



THIS DRAWING AND ALL INFORMATION CONTAINED THEREON ARE THE EXCLUSIVE PROPERTY OF BANJO CORPORATION.
UNLESS SPECIFICALLY NOTED, THIS DRAWING AND ITEMS SHOWN ON THIS DRAWING ARE SUBJECT TO CHANGE AT ANY TIME.

BANJO CORPORATION
150 BANJO DRIVE, CRAWFORDSVILLE, IN 47933
WEB SITE: WWW.BANJO.CORP.COM
E-MAIL: BANJOSALES@IDEXCORP.COM

DESCRIPTION
1" SIDE LOAD MANIFOLD 3 WAY VALVE

PART NUMBER
MV100SL