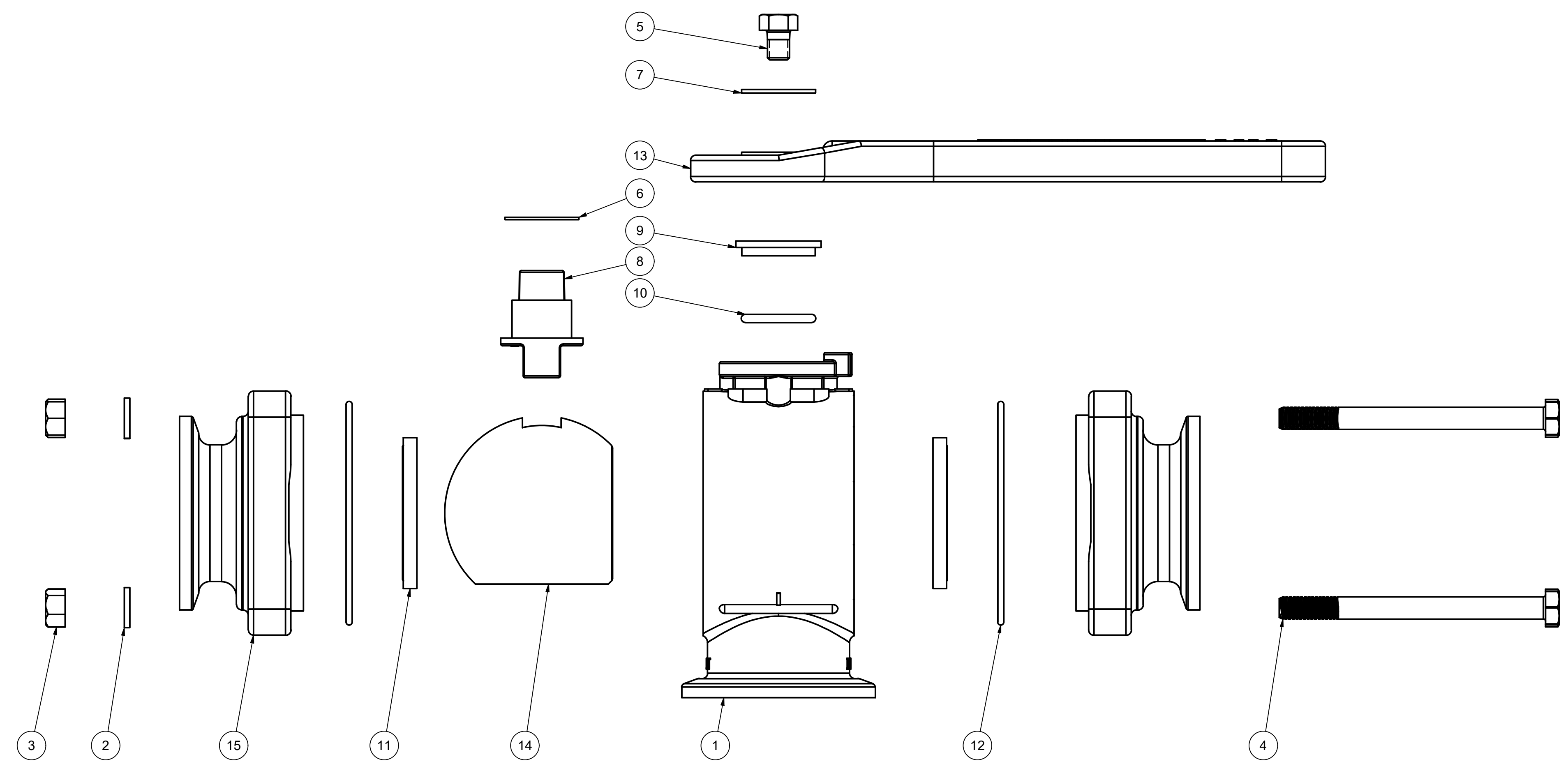


PARTS LIST				
ITEM	QTY	PART NUMBER	DESCRIPTION	
1	1	MV25354B	2" FP MNFLD BL VALVE BODY	
2	4	V20018	3/8" LOCKWASHER	
3	4	V20019	3/8" HEX NUT	
4	4	V25017	3/8-16 X 4 1/2" HHCS	
5	1	V25020	3/8" HANDLE BOLT	
6	1	V25060	VALVE STEM THRUST BEARING	
7	1	V25121	3/8" FENDER WASHER	
8	1	V25151B	STEM 2"FP & 3"FP, MACHINED	
9	1	V25160	STEM BUSHING	
10	1	V25163	AS568A -214 O-RING, FKM, BROWN	
11	2	V25258	3" FP BALL SEAT	
12	2	V25264	CUSTOM O-RING, ID:3.575", CS: 0.103, FKM, BROWN	
13	1	V25353B	2" FP BL HANDLE	
14	1	V25355B	2" FP BL 3-WAY BALL, TUMBLED	
15	2	V25378	2" FP 3-WAY MNFLD END PLATE, MACHINED	



THIS DRAWING AND ALL INFORMATION CONTAINED THEREON ARE THE EXCLUSIVE PROPERTY OF BANJO CORPORATION.

UNLESS SPECIFICALLY NOTED, THIS DRAWING AND ITEMS SHOWN ON THIS DRAWING ARE SUBJECT TO CHANGE AT ANY TIME.

BANJO CORPORATION  
 150 BANJO DRIVE, CRAWFORDSVILLE, IN 47933  
 WEB SITE: WWW.BANJO.CORP.COM  
 E-MAIL: BANJOSALES@IDEXCORP.COM

DESCRIPTION  
**2" FP BOTTOM LOAD VALVE**

PART NUMBER  
**MV220BL**