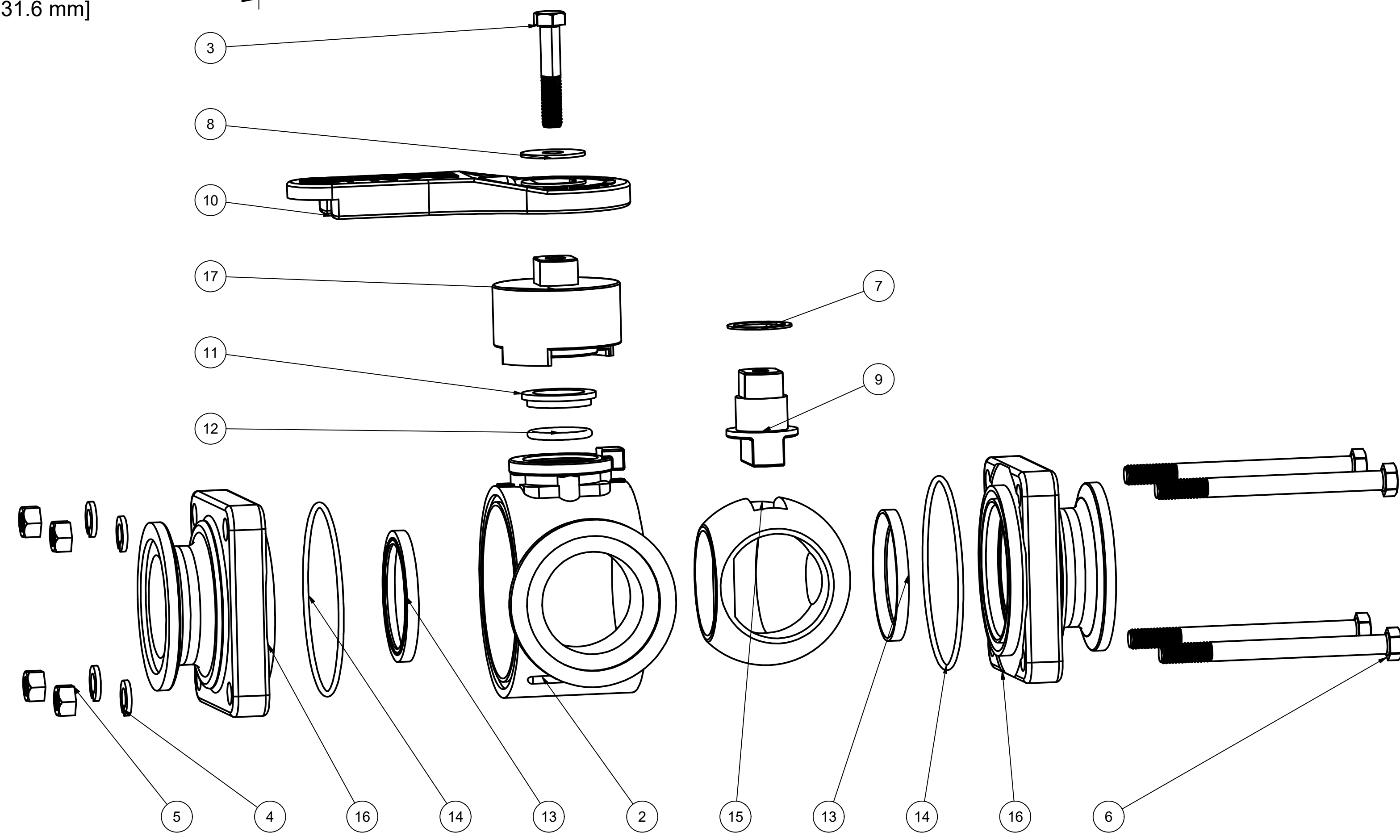
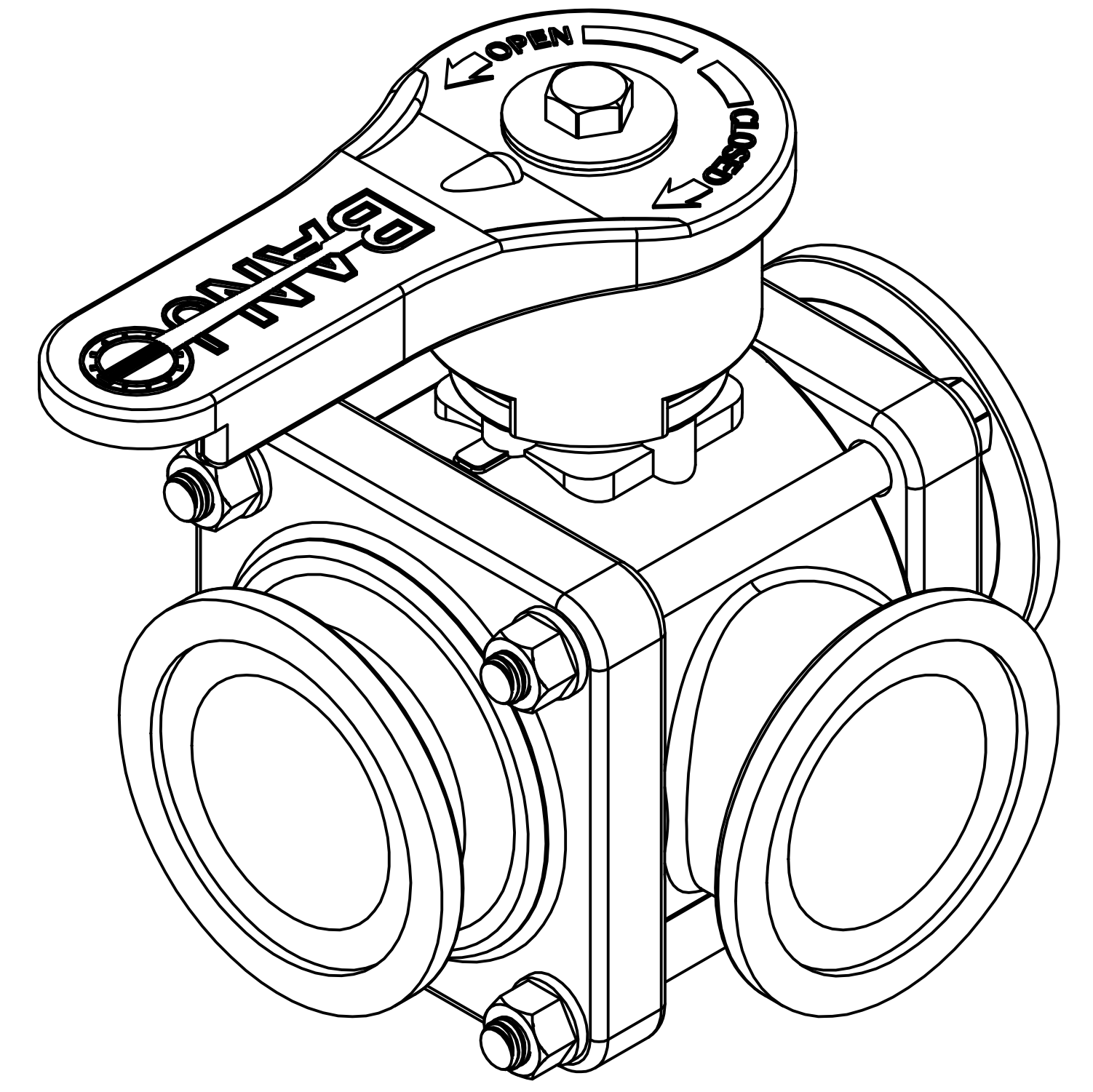


SECTION B-B  
SCALE 1 : 1



PARTS LIST			
ITEM	QTY	PART NUMBER	DESCRIPTION
1	1	050DECAL	DECAL (N/S)
2	1	MV25354SX	2" FP MNFLD SL VALVE BODY
3	1	V20010SS	3/8-16 X 2" HHCS
4	4	V20018	3/8" LOCKWASHER
5	4	V20019	3/8" HEX NUT
6	4	V25017	3/8-16 X 4 1/2" HHCS
7	1	V25060	VALVE STEM THRUST BEARING
8	1	V25121	3/8" Fender Washer
9	1	V25151B	STEM 2"FP & 3"FP, MACHINED
10	1	V25153SH	2" FP HANDLE
11	1	V25160	Stem Bushing
12	1	V25163	AS568A -214 O-RING, FKM, BROWN
13	2	V25258	3" FP Ball Seat
14	2	V25264	CUSTOM O-RING, ID:3.575", CS: 0.103, FKM, BROWN
15	1	V25355S	2" FP SL 3-WAY BALL, TUMBLED
16	2	V25378	2" FP 3-WAY MNFLD END PLATE, MACHINED
17	1	V25153138X	1 3/8" HANDLE OFFSET
18	1	VL200SL	DECAL (N/S)
19	1	VL1000	PRESSURE LABEL (N/S)



THIS DRAWING AND ALL INFORMATION CONTAINED THEREON ARE THE EXCLUSIVE PROPERTY OF BANJO CORPORATION.  
UNLESS SPECIFICALLY NOTED, THIS DRAWING AND ITEMS SHOWN ON THIS DRAWING ARE SUBJECT TO CHANGE AT ANY TIME.

BANJO CORPORATION  
150 BANJO DRIVE, CRAWFORDSVILLE, IN 47933  
WEB SITE: WWW.BANJO.CORP.COM  
E-MAIL: BANJOSALES@IDEXCORP.COM

DESCRIPTION  
**2" FP SL MNFLD VALVE W/EXT HANDLE**

PART NUMBER  
**MV220SLEH**