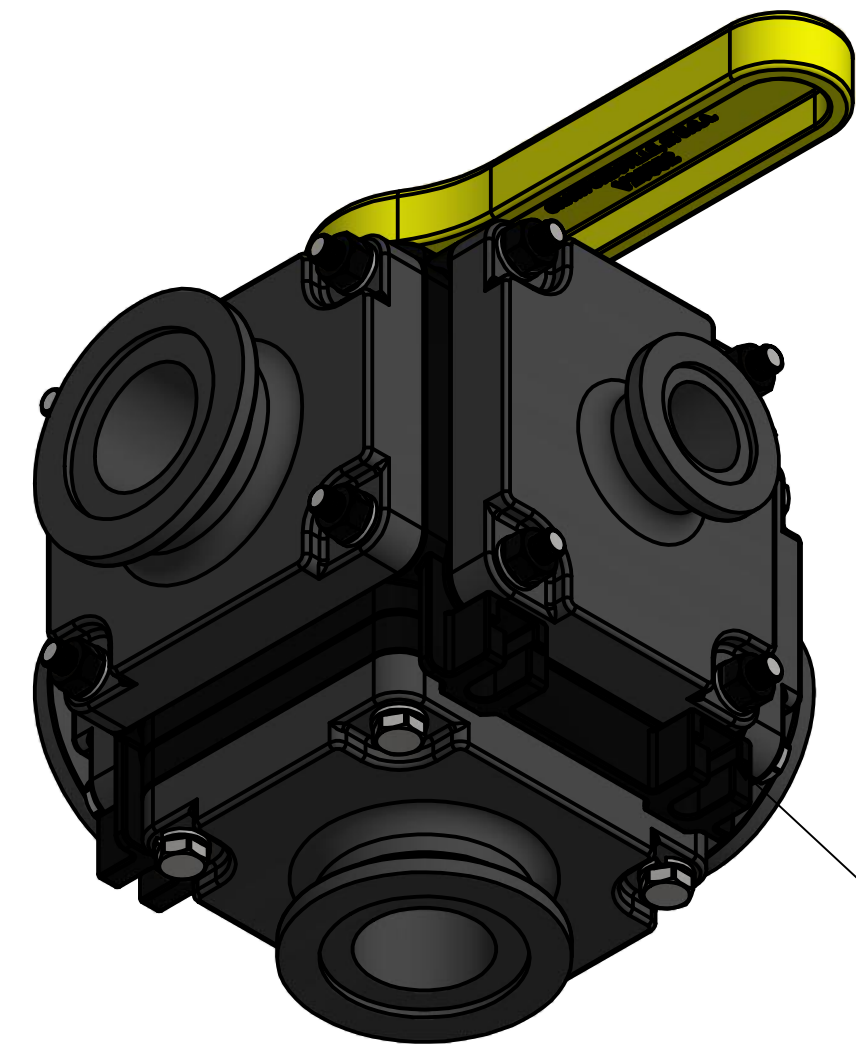
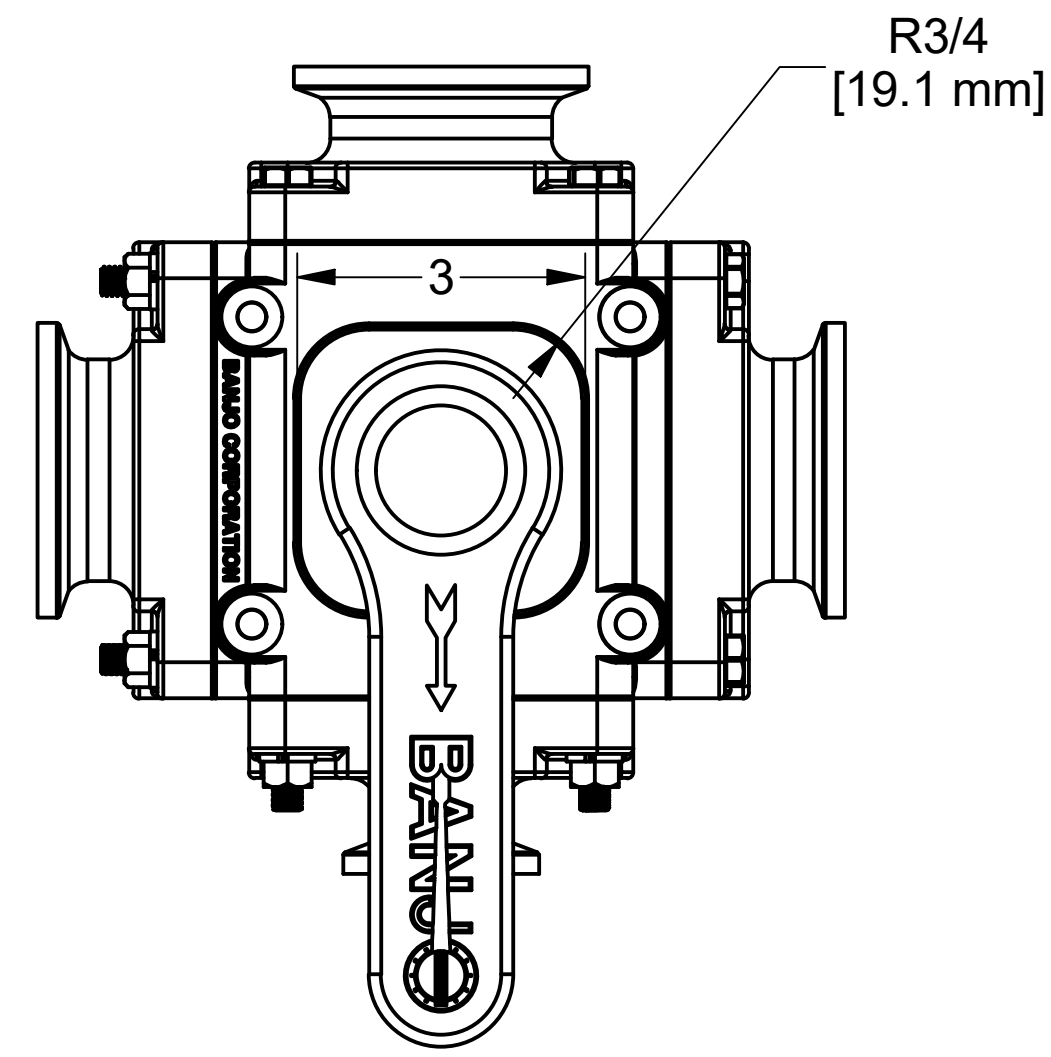
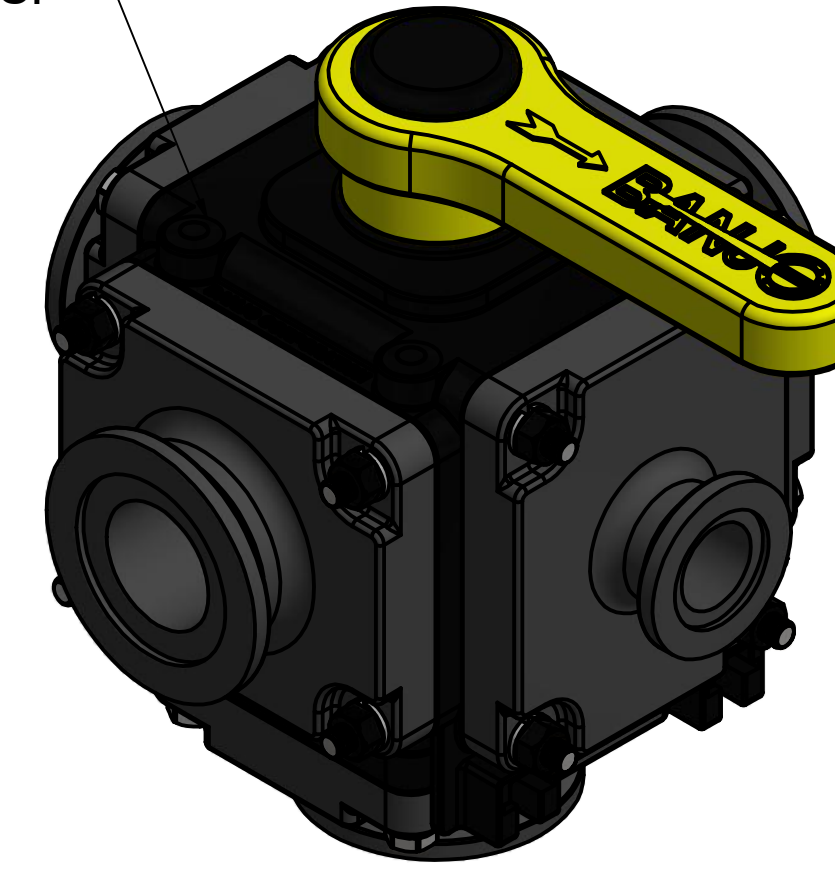


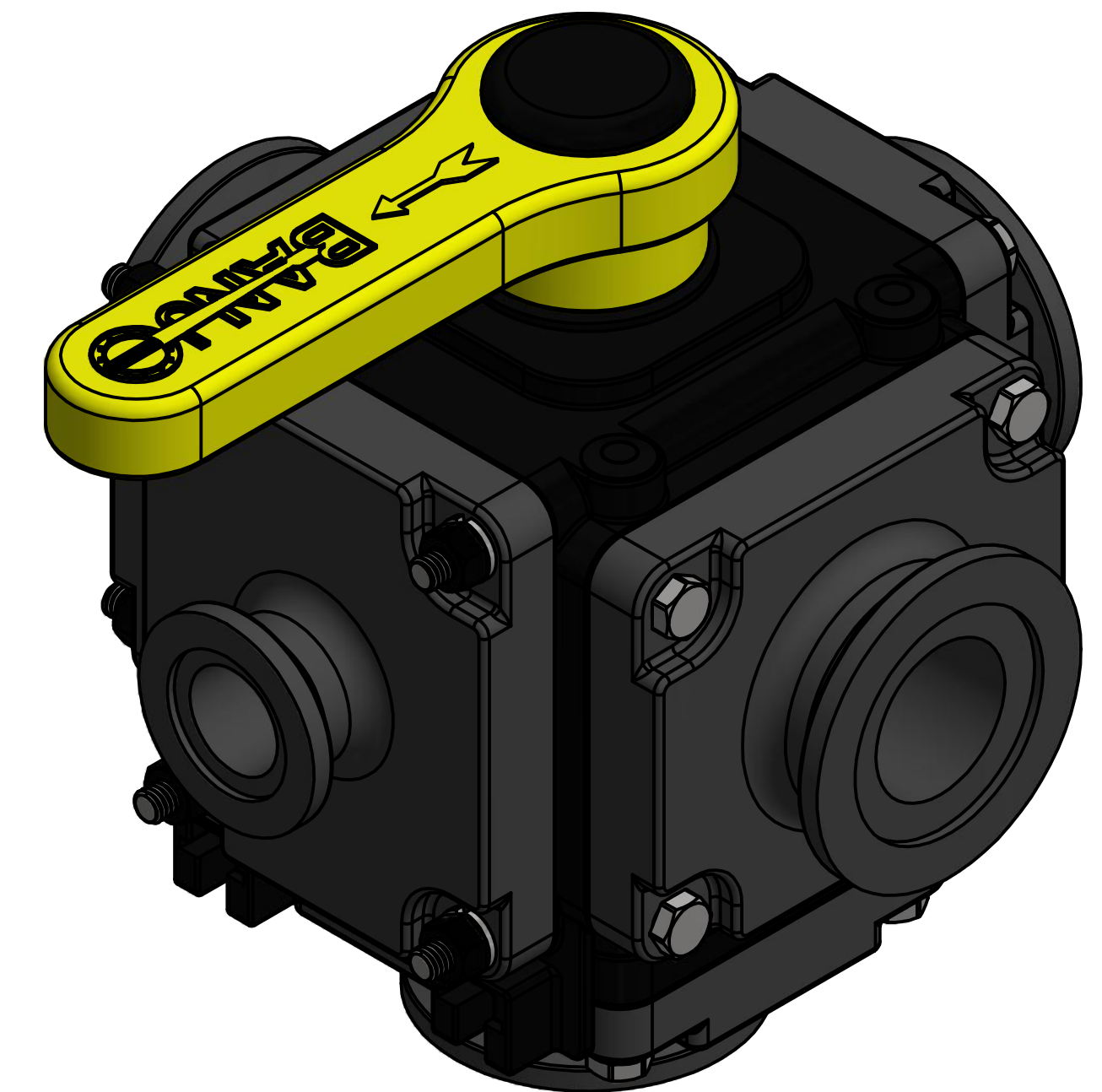
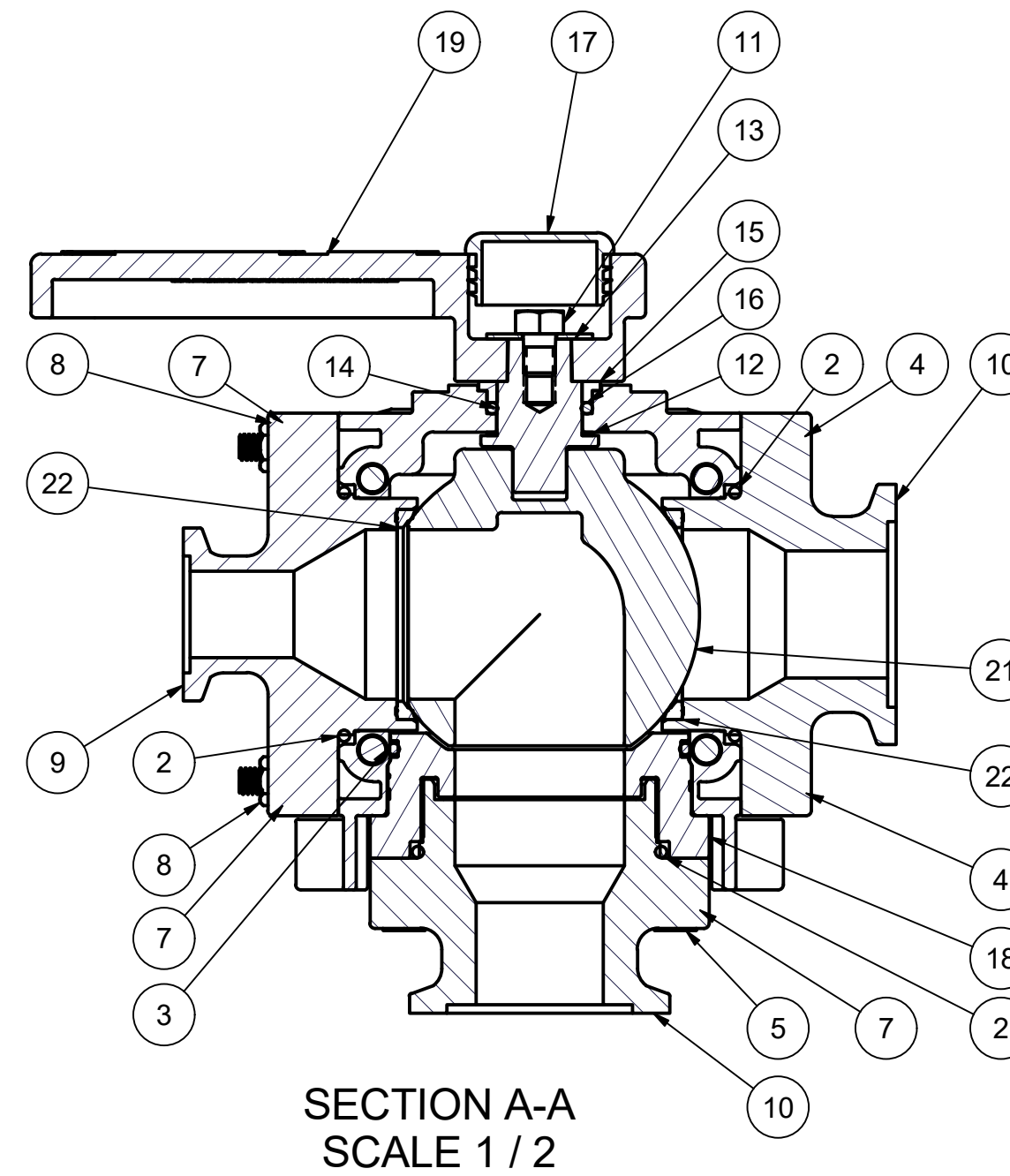
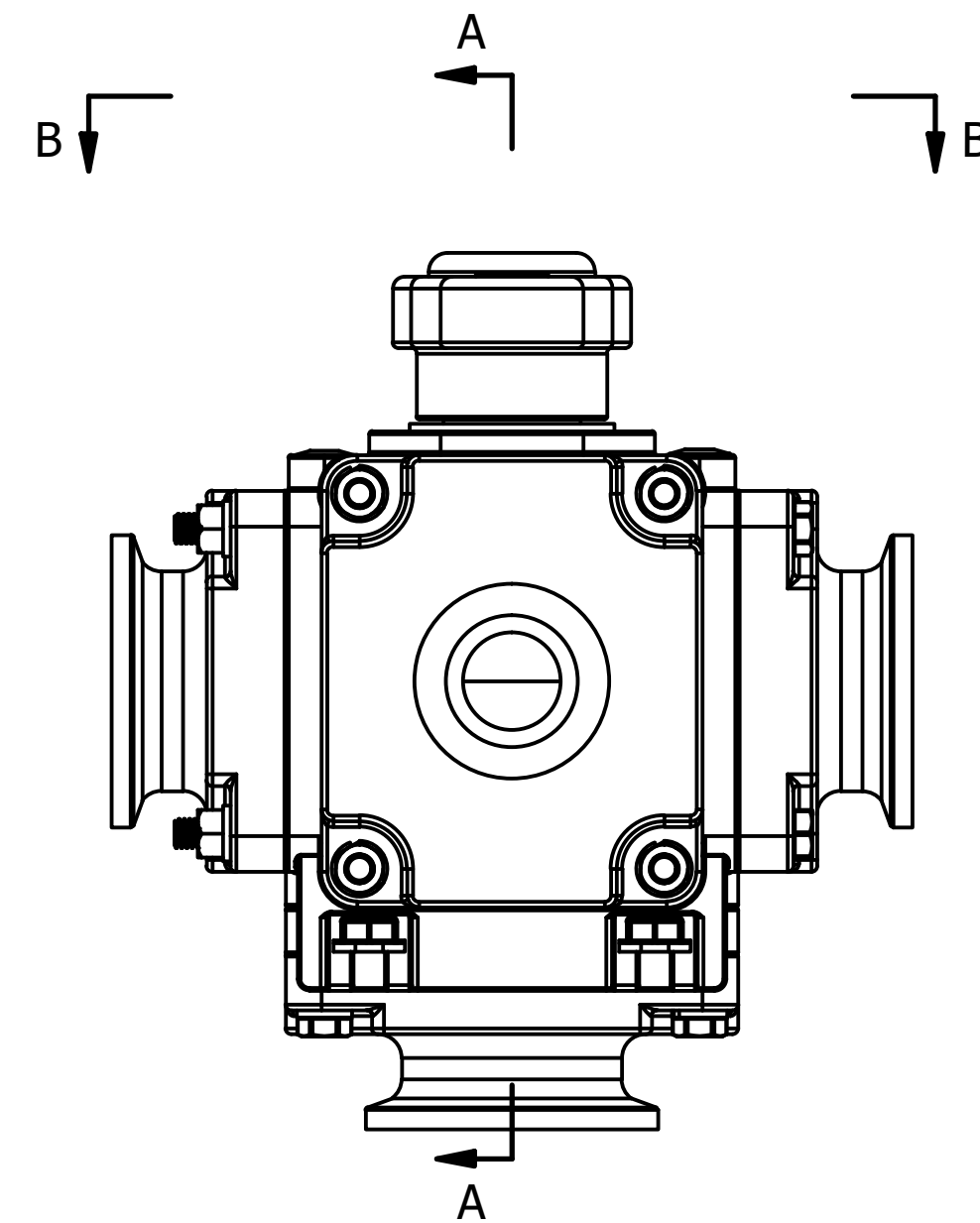
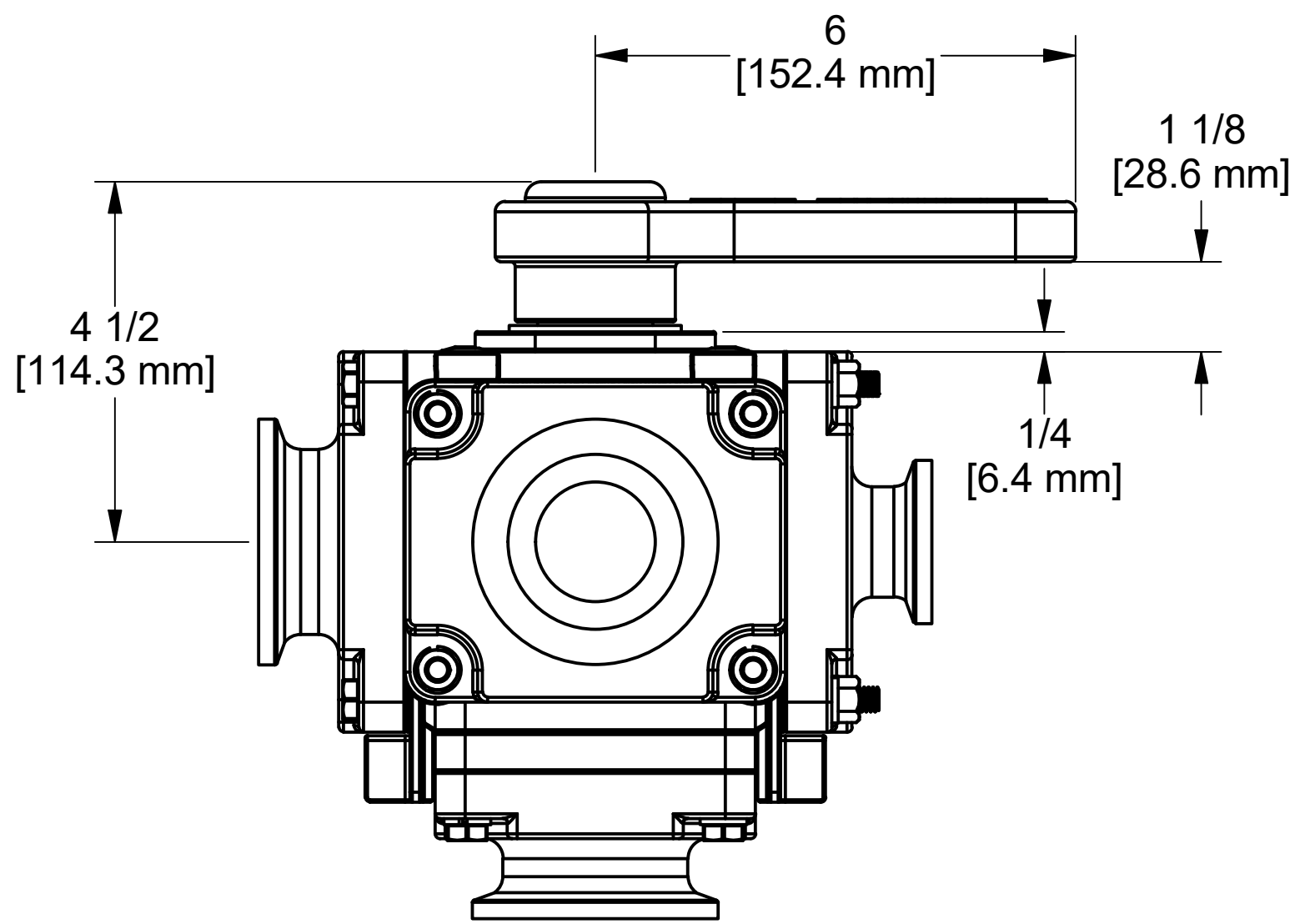
PARTS LIST			
ITEM	QTY	PART NUMBER	DESCRIPTION
1	8	12901	5/16" FLAT WASHER
2	5	A232V	2-232 FKM O-Ring
3	1	A238V	2-238 FKM O-ring
4	8	B0516650	5/16"-18x6.50 HHCS 18-8SS
5	4	BF109	5/16"-18x2.75 HHCS 18-8SS
6	4	PIP0716	7/16" Push In Plug, PE, Black
7	12	V10118	5/16" LOCKWASHER
8	16	V10119	5/16" HEX NUT
9	1	V10578A	2" FP M100 5 WAY VALVE EP
10	4	V20578A	2" SP M200 5 WAY VALVE EP, MACHINED
11	1	V25020	3/8" Handle Bolt
12	1	V25060	VALVE STEM THRUST BEARING
13	1	V25121	3/8" Fender Washer
14	1	V25151B	STEM 2"FP & 3"FP, MACHINED
15	1	V25160	Stem Bushing
16	1	V25163	#214 FKM O'RING
17	1	V25502	3/4" Cap Plug
18	1	V25508AG	5 Way 2" FP EP Spacer w/ 1/2" rise
19	1	V25552	5 Way 2" FP Handle
20	1	V25554AG	5 Way 2" FP Body
21	1	V25555	2" FP 5-WAY VALVE BALL, TUMBLED
22	4	V25558D	Machined TFE Seat No Lube Mod



HOLE FOR OPTIONAL MOUNTING.
5/16" OR M8 NUT AND WASHER CAN BE
PUT IN INSIDE FOR MOUNTING OPTIONS.
(4 PLACES)



MOUNTING SLOT
SLOT FOR 5/16" OR M8 WASHER AND BOLT
FOR MOUNTING OPTIONS.
(4 PLACES)



THIS DRAWING AND ALL
INFORMATION CONTAINED THEREON
ARE THE EXCLUSIVE PROPERTY OF
BANJO CORPORATION.

UNLESS SPECIFICALLY NOTED, THIS
DRAWING AND ITEMS SHOWN ON
THIS DRAWING ARE SUBJECT TO
CHANGE AT ANY TIME.

BANJO CORPORATION
150 BANJO DRIVE, CRAWFORDSVILLE, IN 47933
WEB SITE: WWW.BANJO.CORP.COM
E-MAIL: BANJOSALES@DEXCORP.COM

DESCRIPTION
2" FP 5 WAY VALVE M200 INLET x 3 M200,
1 M100 OUTLET, FKM

PART NUMBER
MV225AG