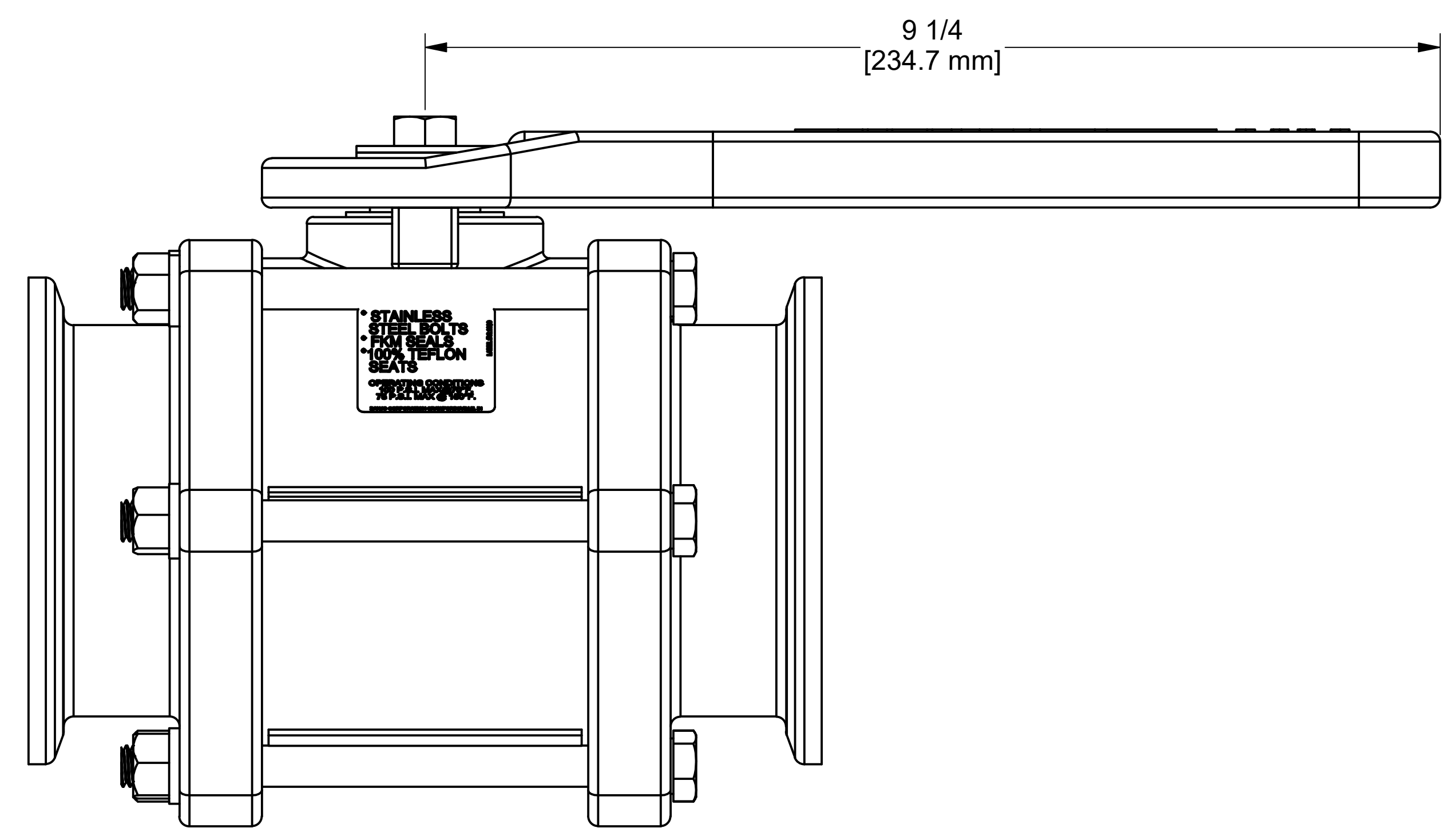
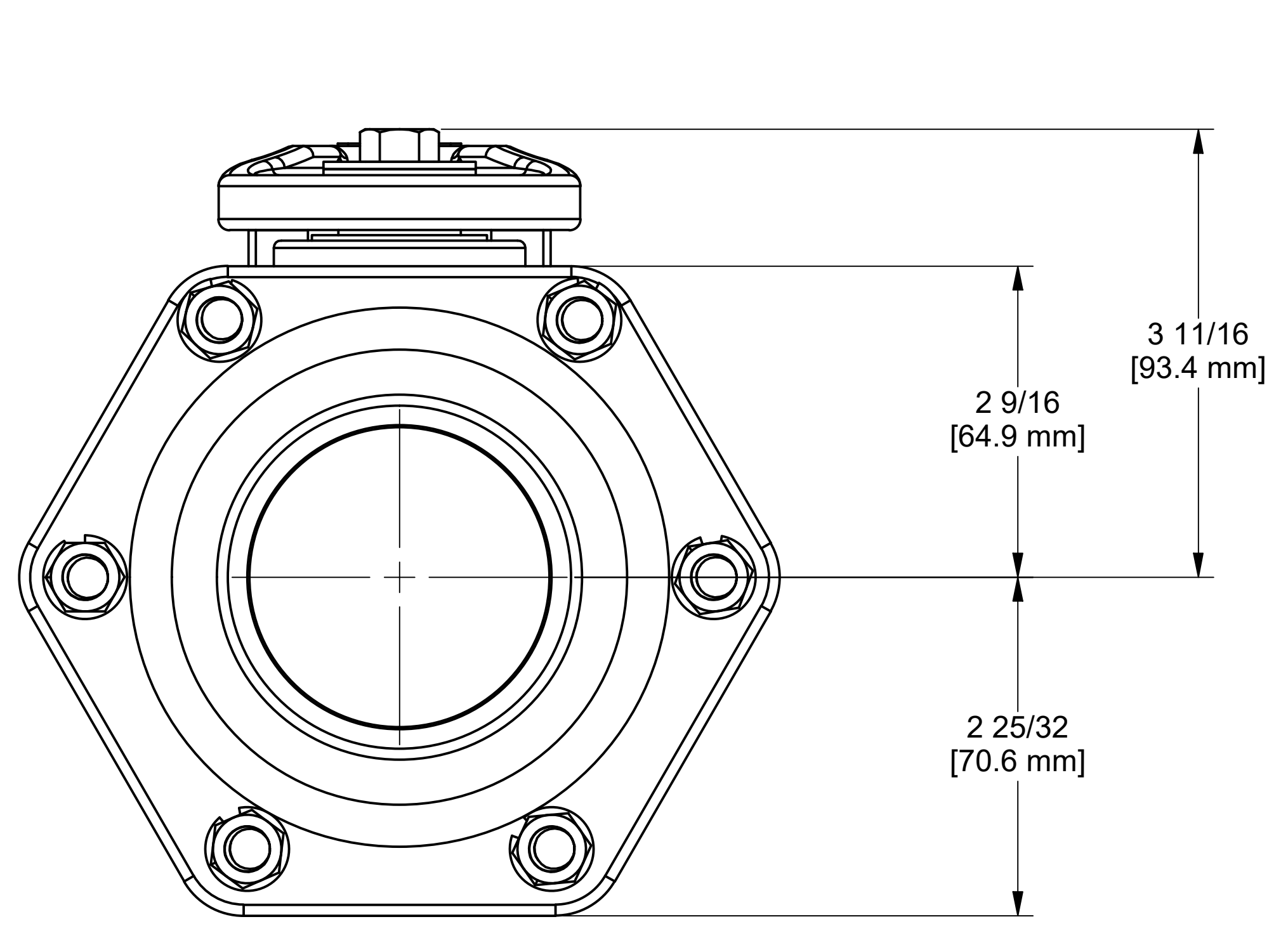
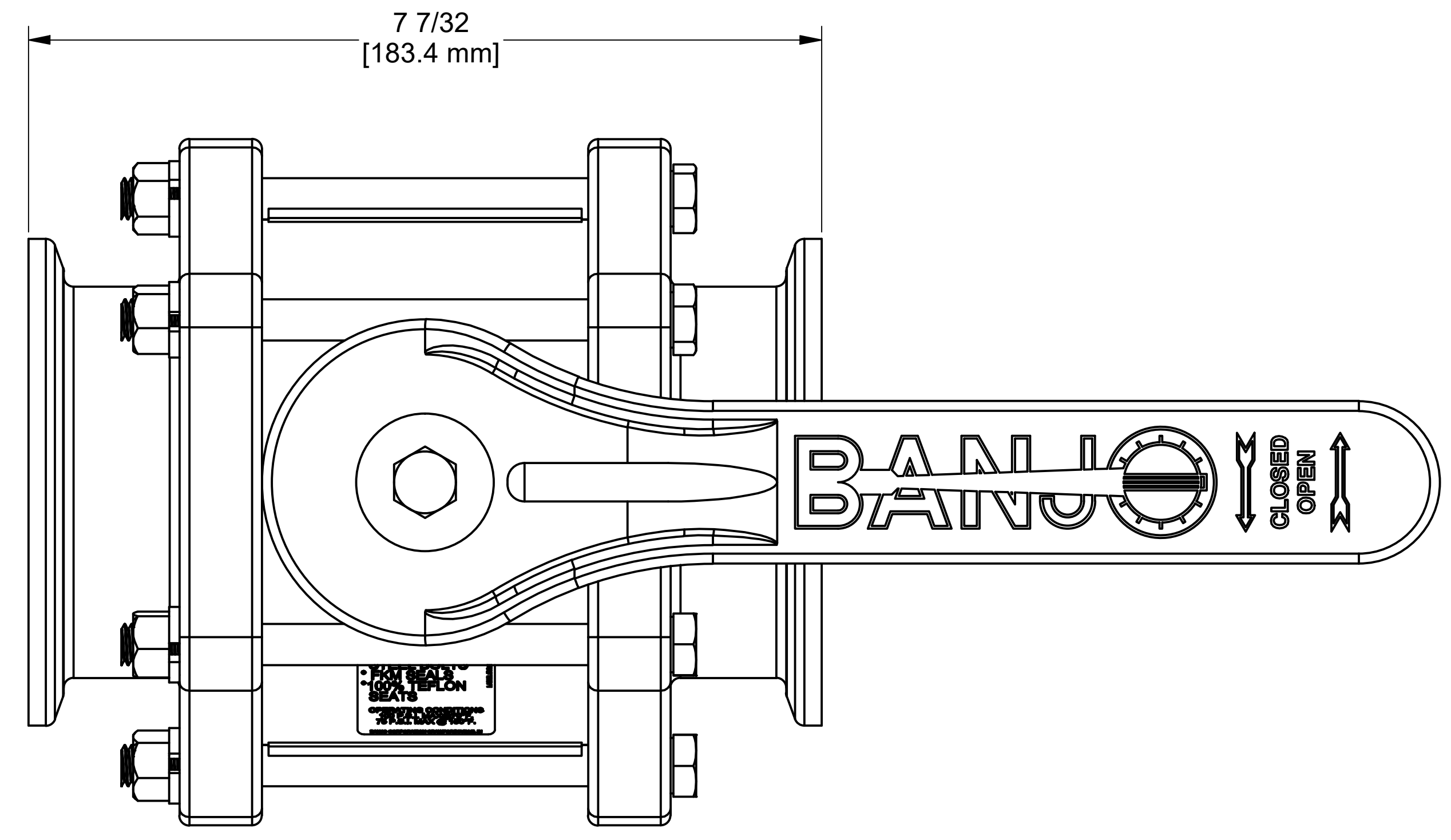
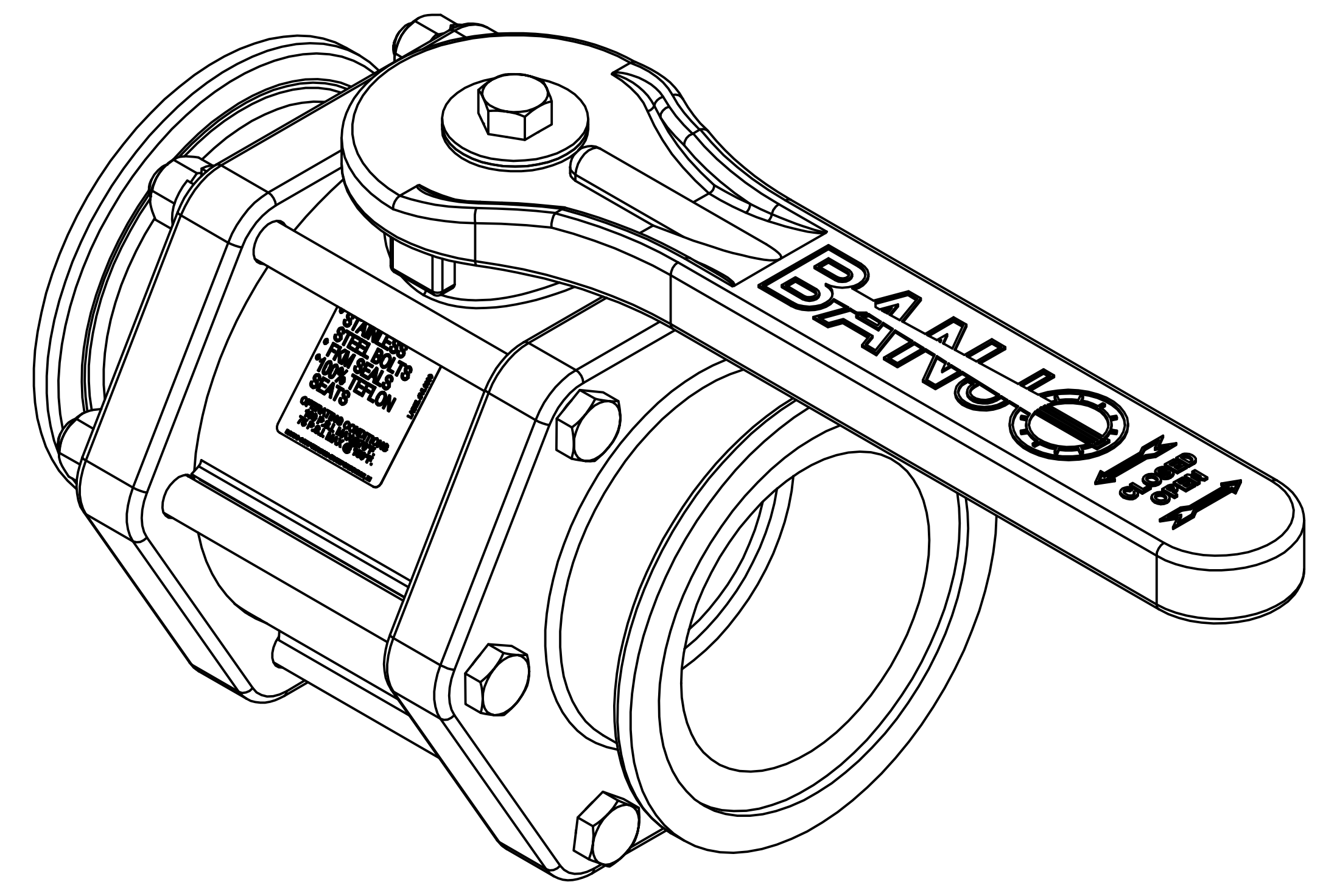
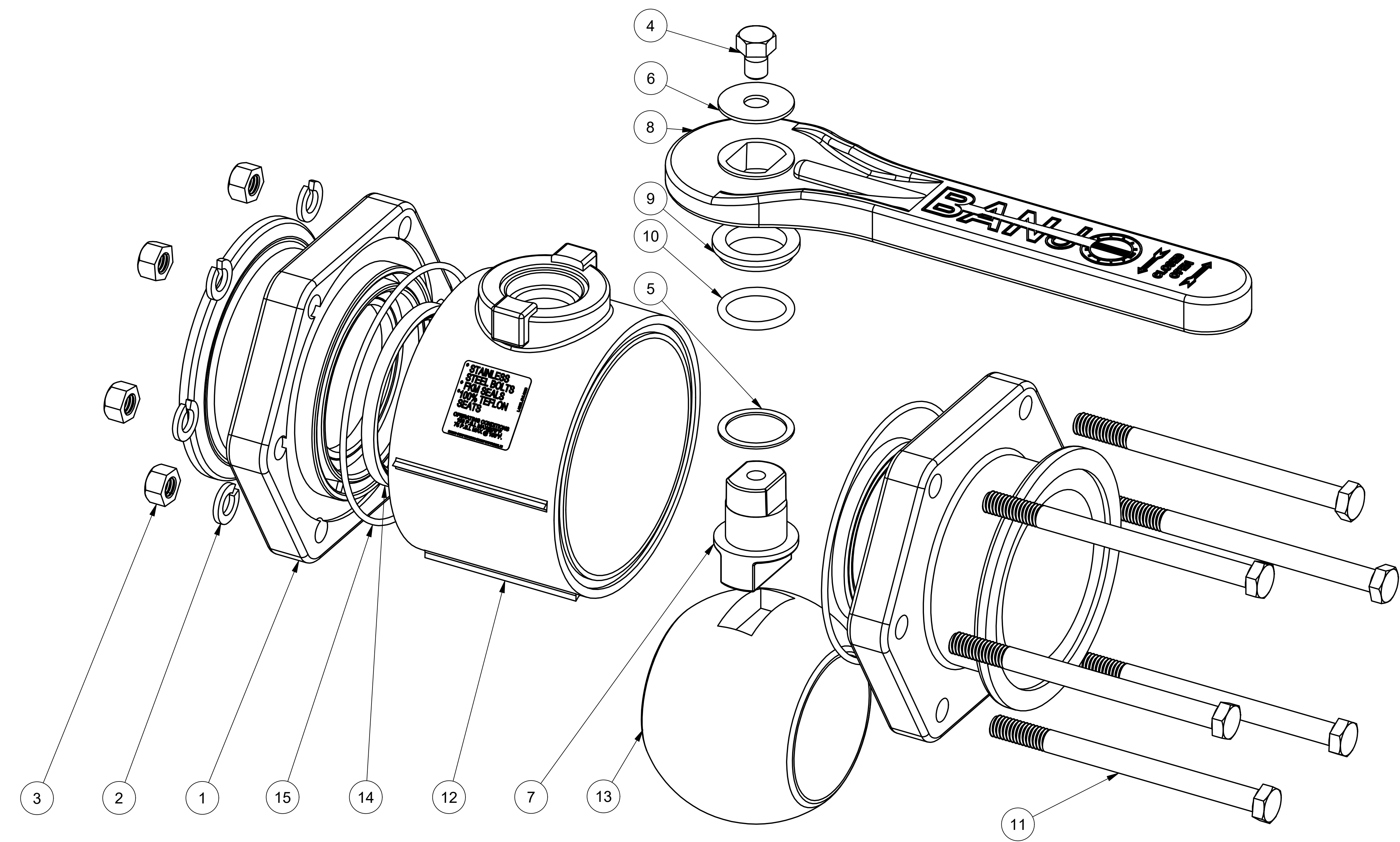


Parts List			
ITEM	QTY	PART NUMBER	DESCRIPTION
1	2	MV30264	3" STANDARD PORT MANIFOLD ENDPLATE, MACHINED
2	6	V20018	3/8" LOCKWASHER
3	6	V20019	3/8" HEX NUT
4	1	V25020	3/8" Handle Bolt
5	1	V25060	VALVE STEM THRUST BEARING
6	1	V25121	3/8" Fender Washer
7	1	V25151B	STEM 2"FP & 3"FP, MACHINED
8	1	V25153	2" FP HANDLE
9	1	V25160	Stem Bushing
10	1	V25163	AS568A -214 O-RING, FKM, BROWN
11	6	V30017	3/8" - 16 X 5" SS Body Bolt
12	1	V30254	3" Std Port Valve Body
13	1	V30255	3" VALVE BALL, TUMBLED
14	2	V30258A	3" FP Ball Seat
15	2	V30265	AS568A -156 O-RING, FKM, BROWN
16	1	VL1001	150 PSI DECAL (N/S)



THIS DRAWING AND ALL INFORMATION CONTAINED THEREON ARE THE EXCLUSIVE PROPERTY OF BANJO CORPORATION.  
UNLESS SPECIFICALLY NOTED, THIS DRAWING AND ITEMS SHOWN ON THIS DRAWING ARE SUBJECT TO CHANGE AT ANY TIME.

BANJO CORPORATION  
150 BANJO DRIVE, CRAWFORDSVILLE, IN 47933  
WEB SITE: WWW.BANJOCORP.COM  
E-MAIL: BANJOSALES@IDEXCORP.COM

DESCRIPTION  
3" STANDARD PORT MANIFOLD VALVE

PART NUMBER  
MV300