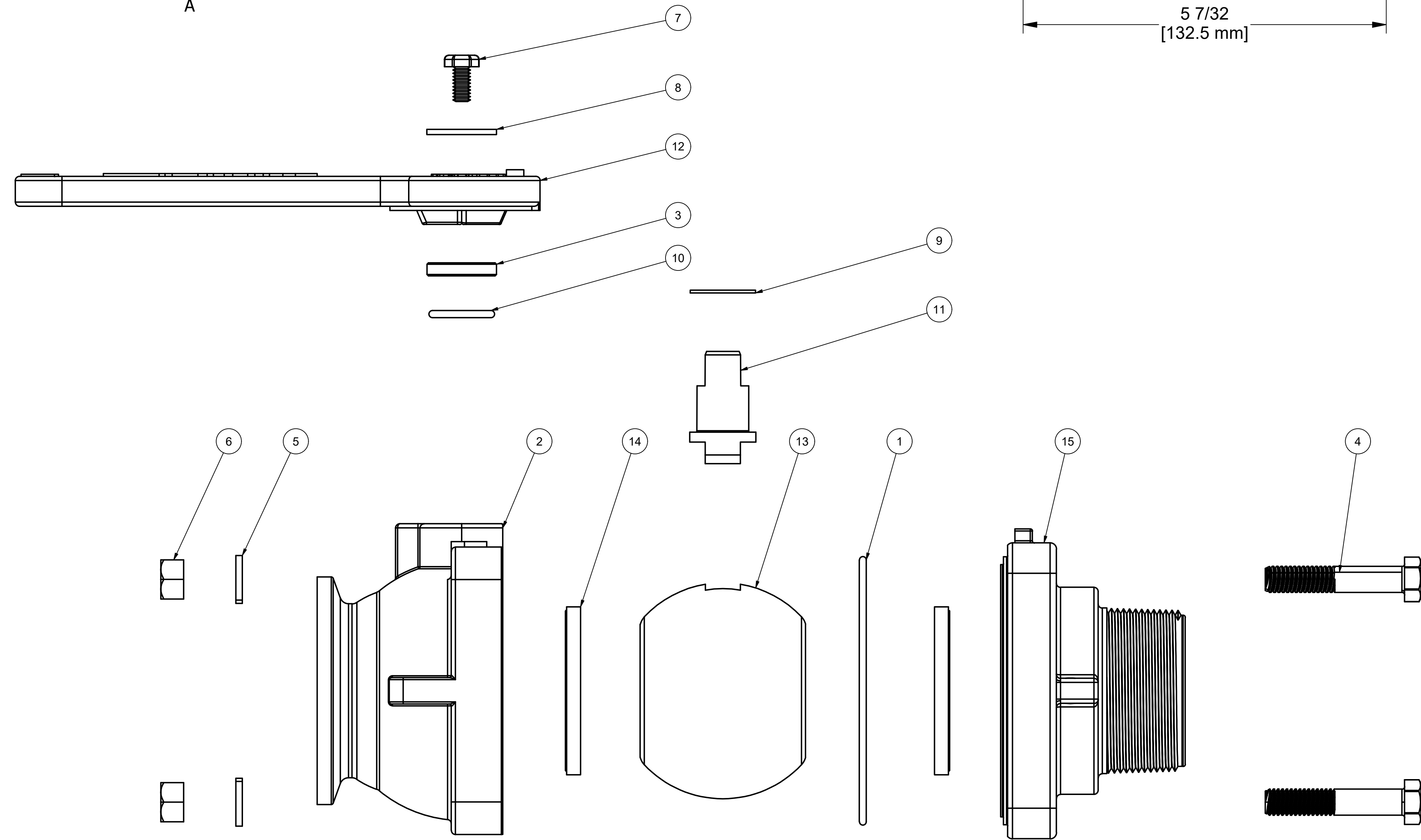


PARTS LIST				
ITEM	QTY	PART NUMBER	DESCRIPTION	
1	1	A93M250V	2.50 MM x 93 MM ID METRIC O-RING, FKM, BROWN	
2	1	MV25254	2" FP STUBBY MANIFOLD BODY, MACHINED	
3	1	SB075100188T	SLEEVE BEARING PTFE 3/4 x 1 x 0.188	
4	4	V20010SS	3/8-16 X 2" HHCS	
5	4	V20018	3/8" LOCKWASHER	
6	4	V20019	3/8-16 HEX NUT	
7	1	V20020	2" handle Bolt	
8	1	V20021	Handle Washer	
9	1	V20060	VALVE STEM THRUST BEARING	
10	1	V20163	AS568A -116 O-RING, FKM, BROWN	
11	1	VS20151	2" STUBBY VALVE STEM	
12	1	VS25153	2" FP STUBBY HANDLE	
13	1	VS25255	2" Stubby Full Port Ball	
14	2	VS25258AR1	2" FP BALL SEAT	
15	1	VSMT25356	2" FP 4-BOLT MALE THREAD ENDPLATE	



THIS DRAWING AND ALL INFORMATION CONTAINED THEREON ARE THE EXCLUSIVE PROPERTY OF BANJO CORPORATION.

UNLESS SPECIFICALLY NOTED, THIS DRAWING AND ITEMS SHOWN ON THIS DRAWING ARE SUBJECT TO CHANGE AT ANY TIME.

BANJO CORPORATION
 150 BANJO DRIVE, CRAWFORDSVILLE, IN 47933
 WEB SITE: WWW.BANJO.CORP.COM
 E-MAIL: BANJOSALES@IDEXCORP.COM

DESCRIPTION
 2"FP STUBBY MANIFOLD VALVE w/ MALE THREAD EP

PART NUMBER
 MVSMT220FP