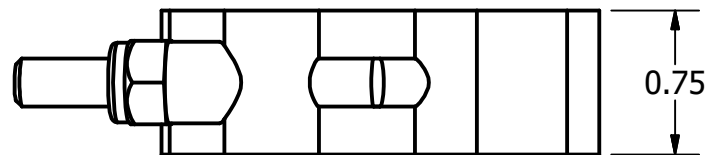


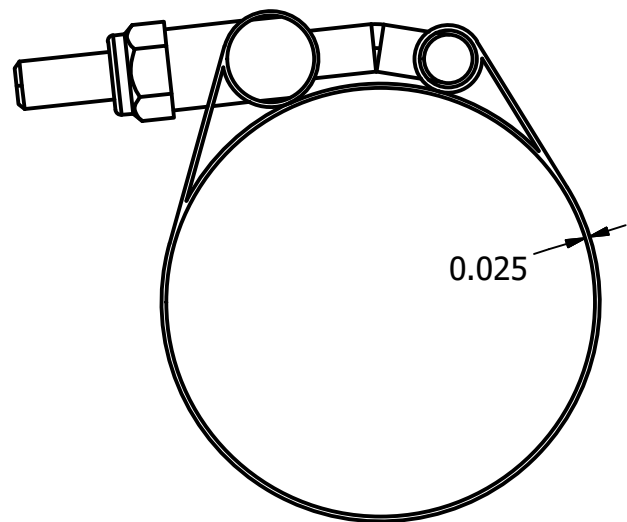
2



1



B



Note:

Matl: 300 Series Stainless Steel

Clamp Min  $\leq \text{Ø}2.18$

Clamp Max  $\geq \text{Ø}2.40$

Max Torque  $\geq 75$  in-lbs.

Model for representation purposes only.



B



A



**STAINLESS TC-206**



A

THIS DRAWING AND ALL INFORMATION CONTAINED THEREON ARE THE EXCLUSIVE PROPERTY OF BANJO CORPORATION.

UNLESS SPECIFICALLY NOTED, THIS DRAWING AND ITEMS SHOWN ON THIS DRAWING ARE SUBJECT TO CHANGE AT ANY TIME.

**BANJO CORPORATION**

150 BANJO DRIVE, CRAWFORDSVILLE, IN 47933  
WEB SITE: WWW.BANJOCORP.COM  
E-MAIL: BANJOSALES@IDEXCORP.COM

DESCRIPTION

2 1/16" - 2 3/8" T-Bolt Clamp

PART NUMBER

TC206

2



1