

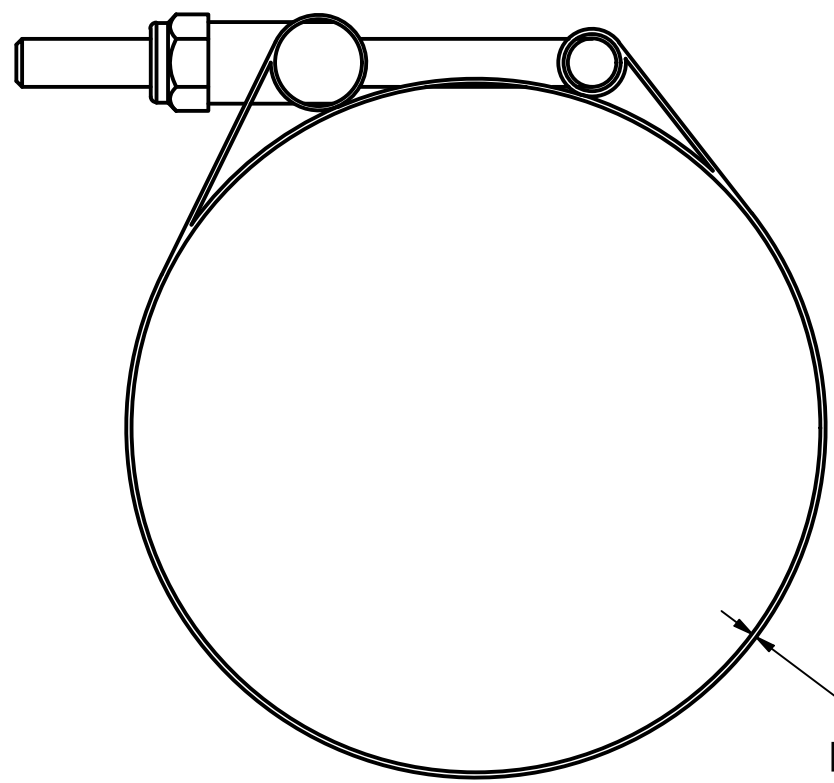
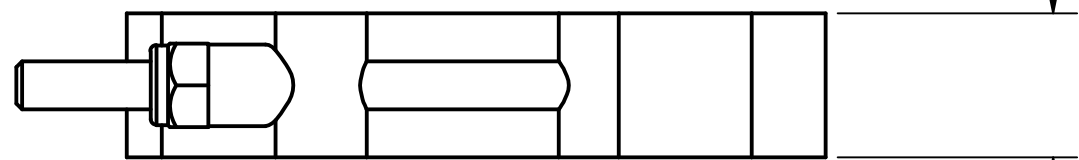
4

3

2

1

3/4  
[19.1 mm]



1/32  
[0.6 mm]



NOTES:

MATL: 300 SERIES STAINLESS STEEL

CLAMP MIN ≤ Ø3.50

CLAMP MAX ≥ Ø3.89

MAX TORQUE ≥ 75 IN-LBS.

MODEL FOR REPRESENTATION PURPOSES ONLY.

**STAINLESS TC-343 - 1**

THIS DRAWING AND ALL INFORMATION CONTAINED THEREON ARE THE EXCLUSIVE PROPERTY OF BANJO CORPORATION.

UNLESS SPECIFICALLY NOTED, THIS DRAWING AND ITEMS SHOWN ON THIS DRAWING ARE SUBJECT TO CHANGE AT ANY TIME.



**BANJO CORPORATION**  
A UNIT OF IDEX CORPORATION  
150 BANJO DRIVE, CRAWFORDSVILLE, IN 47933  
WEB SITE: WWW.BANJOCORP.COM  
E-MAIL: BANJOSALES@IDEXCORP.COM

DESCRIPTION:  
**3 7/16" - 3 3/4" T-BOLT CLAMP**

PART NUMBER: **TC343**

4

3

2

1