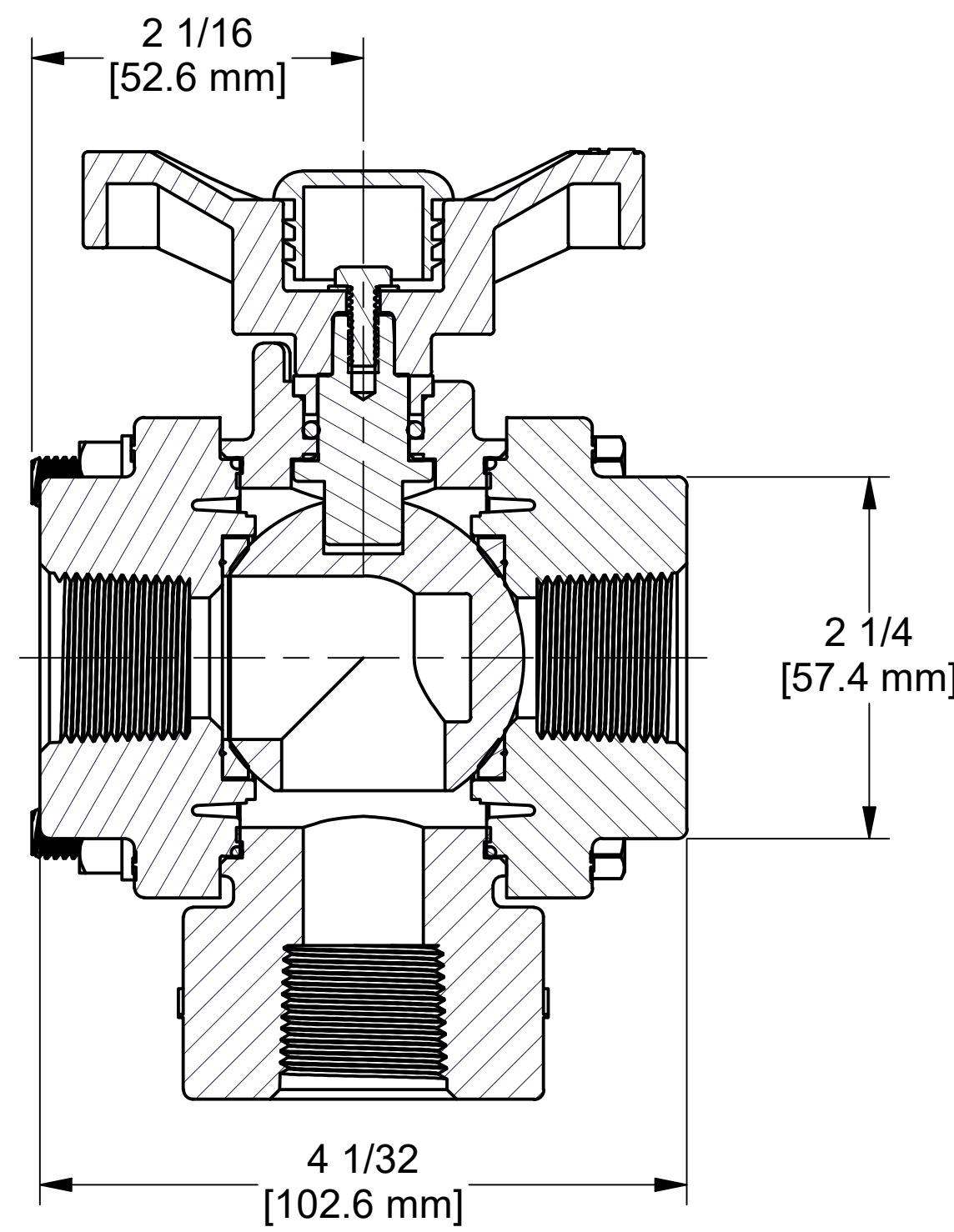
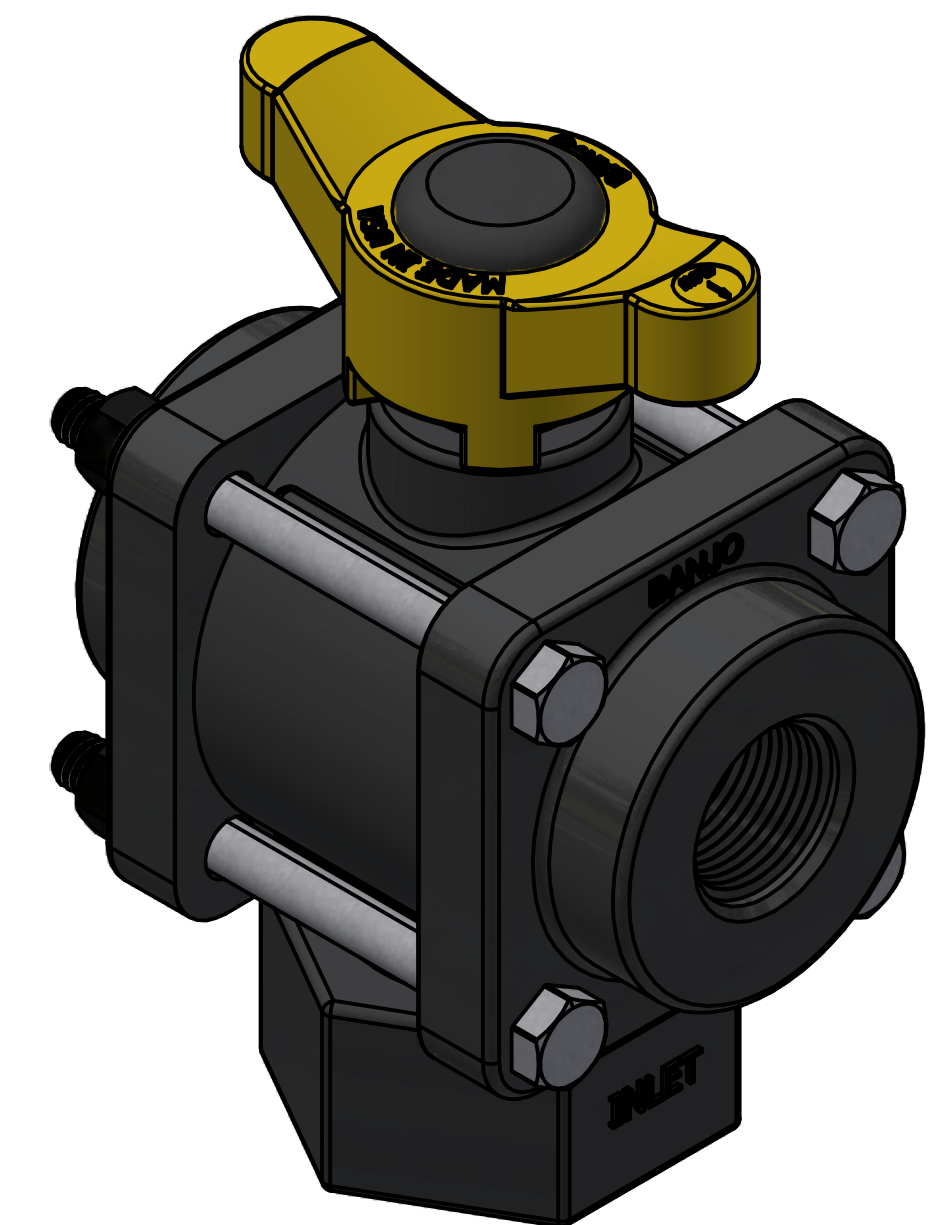
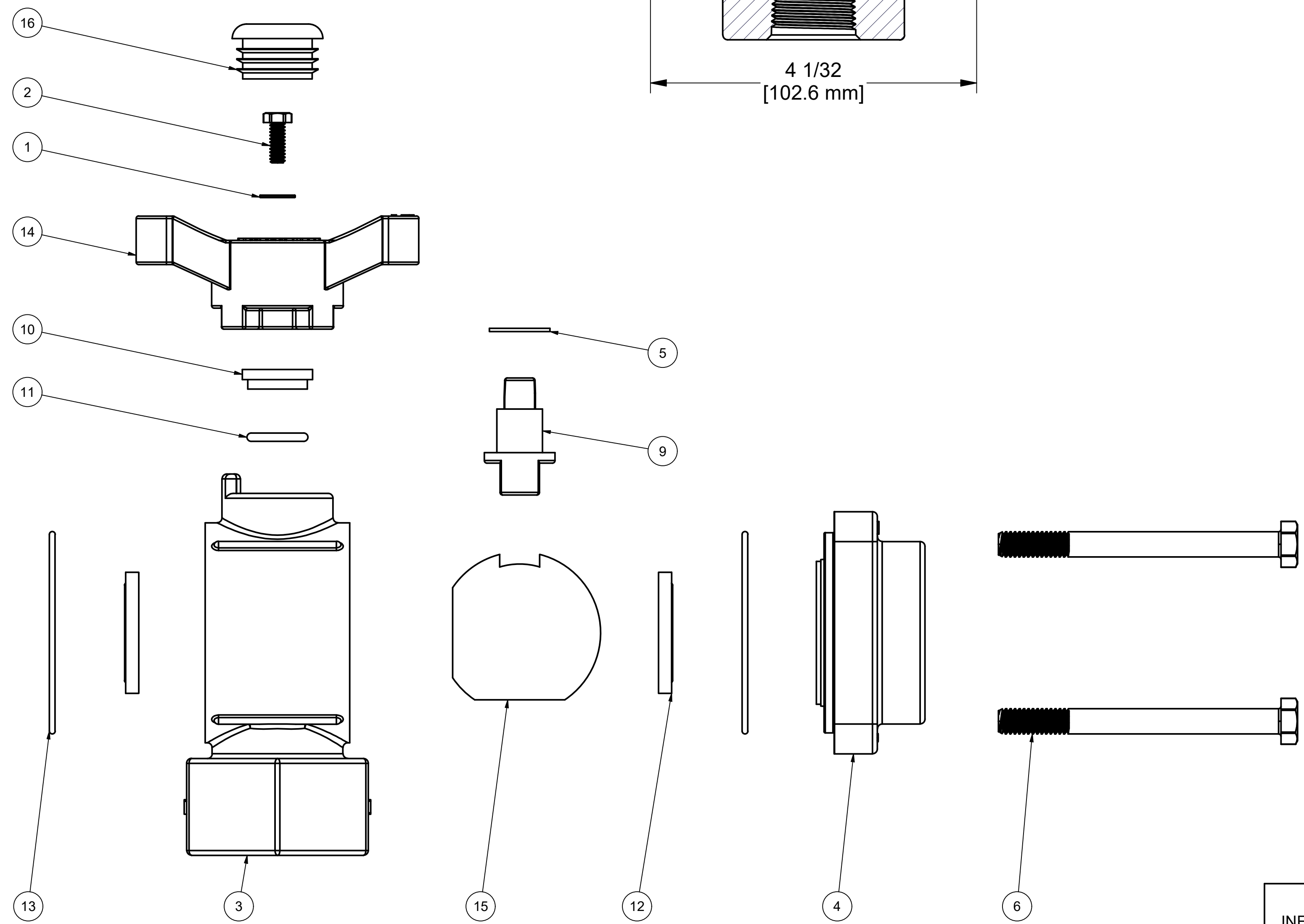


SECTION A-A
SCALE 1 : 1



Parts List			
ITEM	QTY	PART NUMBER	DESCRIPTION
1	1	SW10	#10 WASHER
2	1	V07020	#10-24x0.50 HHCS 18-8SS
3	1	V07354B	3/4" BL VALVE BODY, MACHINED
4	2	V07357	3/4" NPT 3-WAY ENDPLATE, MACHINED
5	1	V10060	THRUST BEARING
6	4	V10117	5/16 - 18 X 3 1/2" HHCS
7	4	V10118	5/16" LOCKWASHER
8	4	V10119	5/16"-18 SS NUT
9	1	V10151	1" VALVE STEM W/ INSERT
10	1	V10159	UPPER-LOWER STEM BUSHING, PTFE
11	1	V10163	AS568A -113 O-RING, FKM, BROWN
12	2	V10258	1" BALL VALVE SEAT
13	2	V10264	AS568A -036 O-RING, FKM, BROWN
14	1	V10353TB	BOTTOM LOAD T-HANDLE
15	1	V10355B	1" FP BL BALL, TUMBLED
16	1	V20353C	1 1/8" CAPLUG



THIS DRAWING AND ALL INFORMATION CONTAINED THEREON ARE THE EXCLUSIVE PROPERTY OF BANJO CORPORATION.

UNLESS SPECIFICALLY NOTED, THIS DRAWING AND ITEMS SHOWN ON THIS DRAWING ARE SUBJECT TO CHANGE AT ANY TIME.

BANJO CORPORATION
 A UNIT OF IDEX CORPORATION
 150 BANJO DRIVE, CRAWFORDSVILLE, IN 47933
 WEB SITE: WWW.BANJOCORP.COM
 E-MAIL: BANJOSALES@IDEXCORP.COM

DESCRIPTION:
3/4" BOTTOM LOAD 3-WAY VALVE

PART NUMBER:
V075BL