

8

7

6

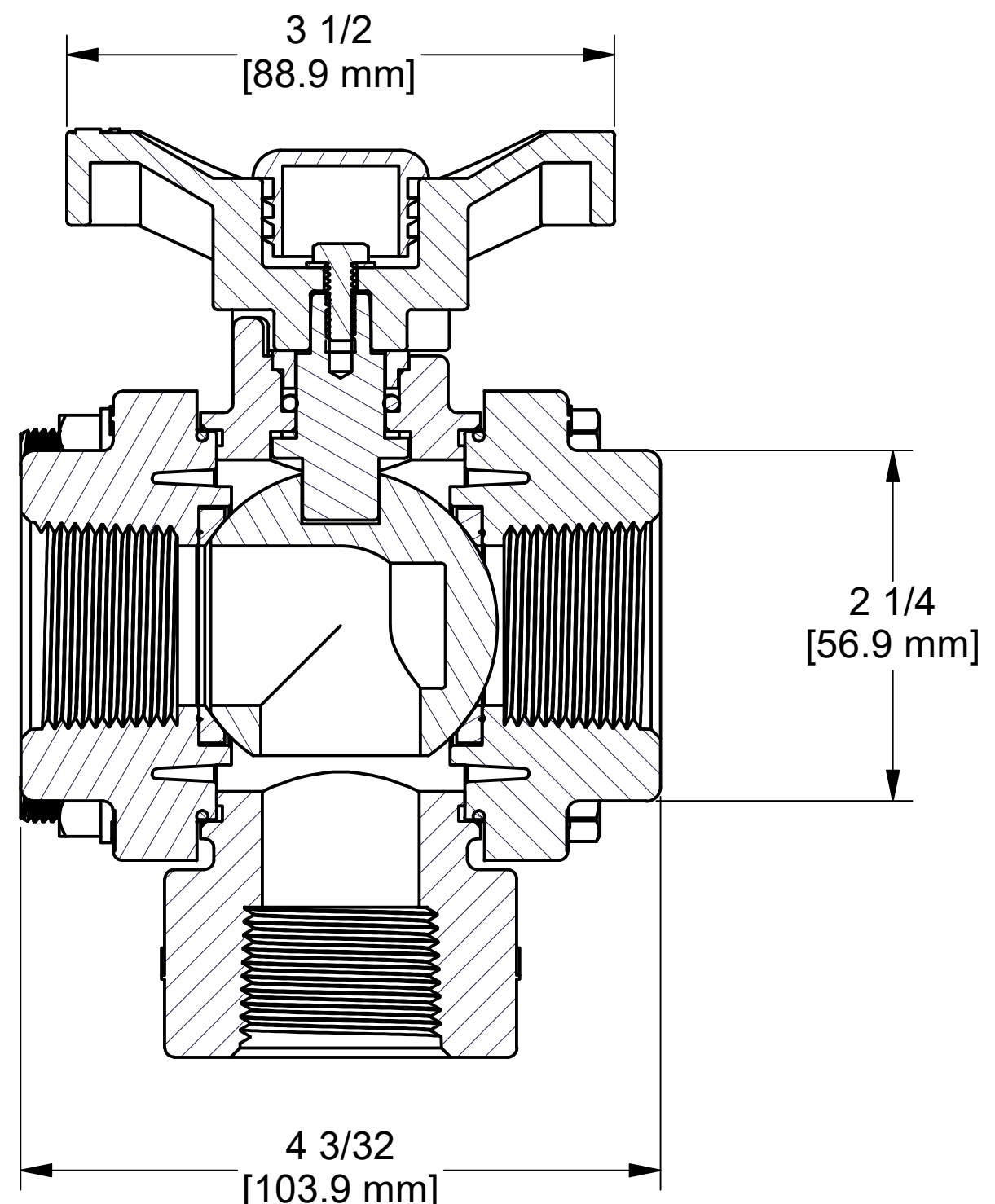
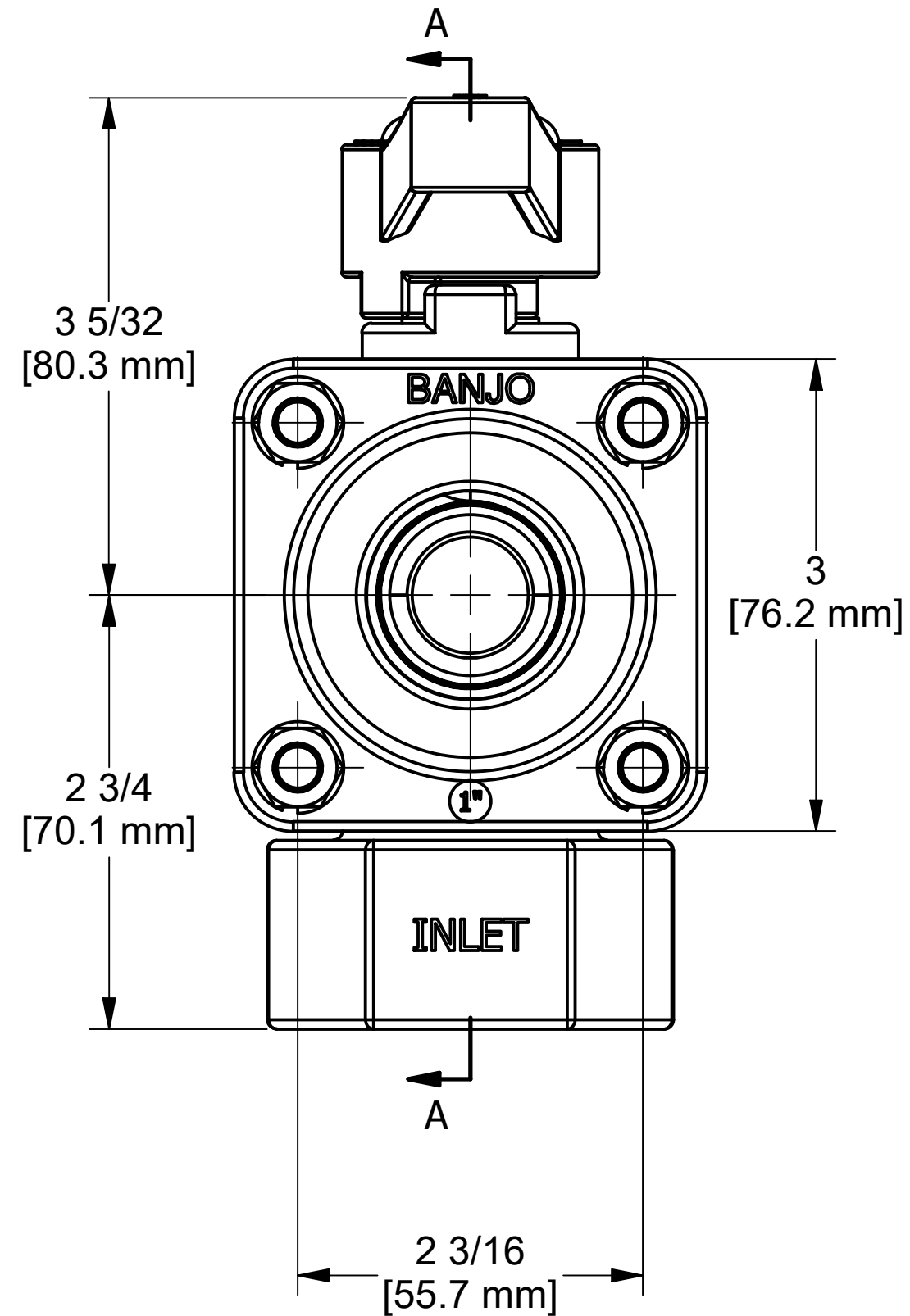
5

4

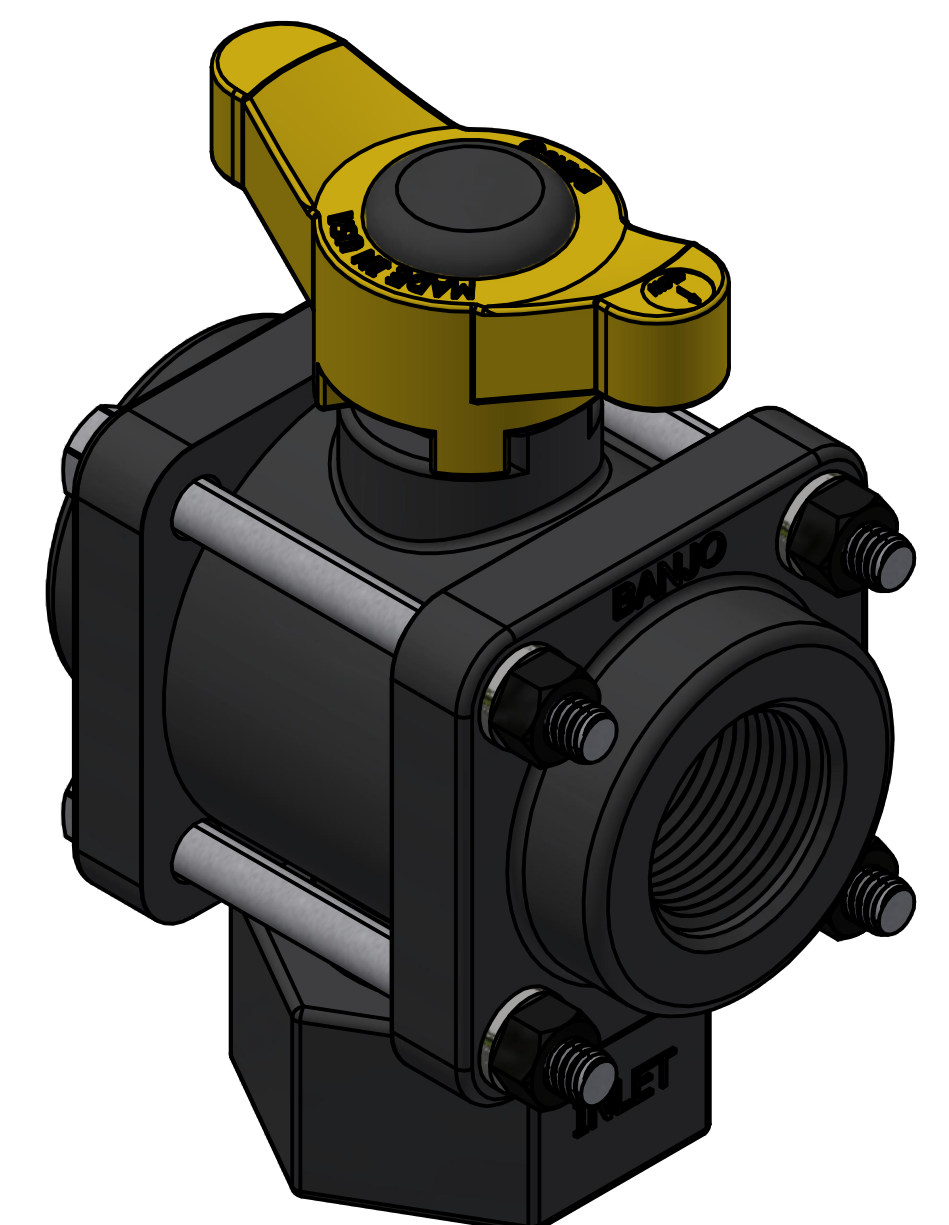
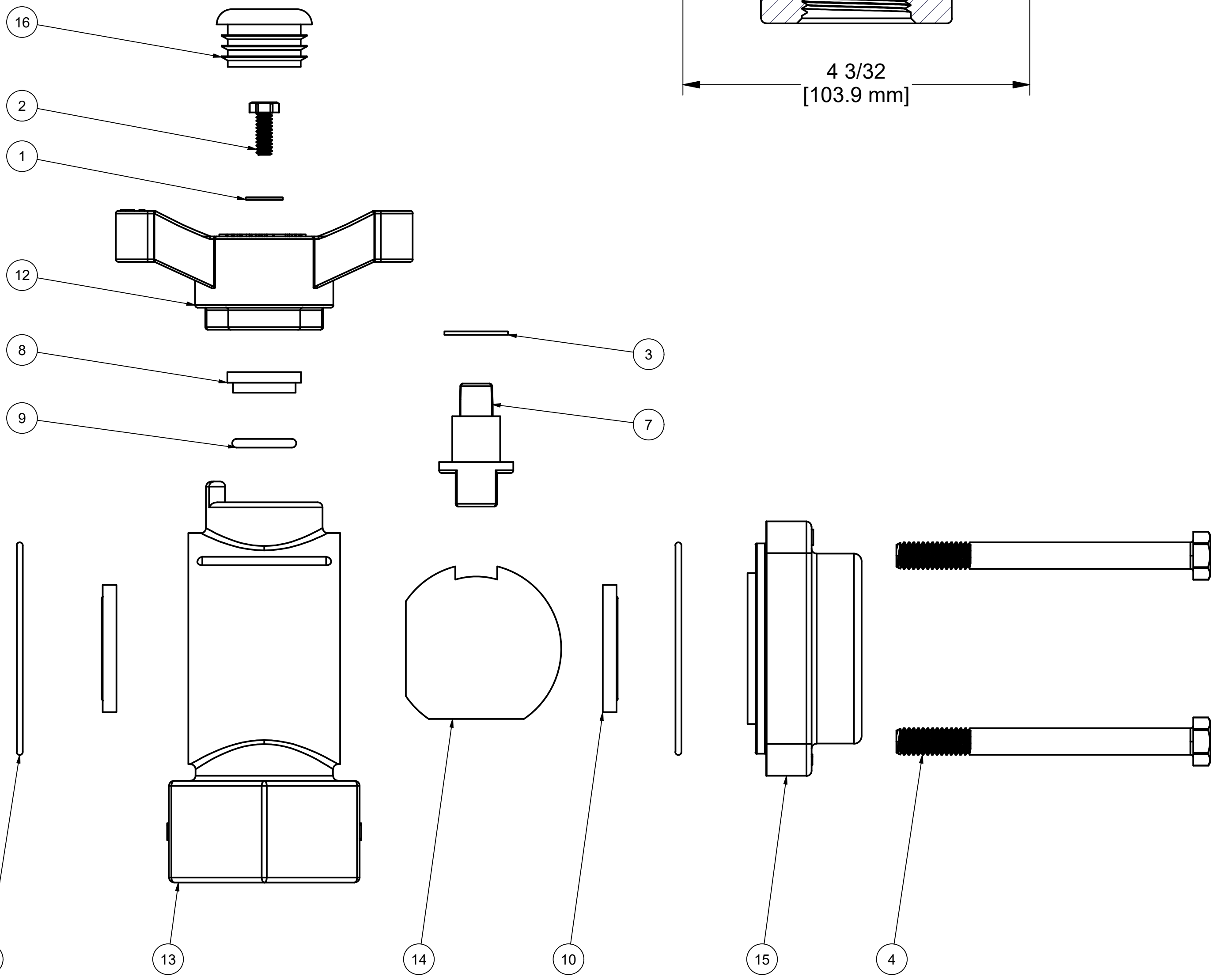
3

2

1



PARTS LIST			
ITEM	QTY	PART NUMBER	DESCRIPTION
1	1	SW10	#10 WASHER
2	1	V07020	#10-24x0.50 HHCS 18-8SS
3	1	V10060	THRUST BEARING
4	4	V10117	5/16 - 18 X 3 1/2" HHCS
5	4	V10118	5/16" LOCKWASHER
6	4	V10119	5/16"-18 SS NUT
7	1	V10151	1" VALVE STEM W/ INSERT
8	1	V10159	UPPER-LOWER STEM BUSHING, PTFE
9	1	V10163	AS568A -113 O-RING, FKM, BROWN
10	2	V10258	1" BALL VALVE SEAT
11	2	V10264	AS568A -036 O-RING, FKM, BROWN
12	1	V10353TB	BOTTOM LOAD T-HANDLE
13	1	V10354B	BOTTOM LOAD VALVE BODY, MACHINED
14	1	V10355B	1" FP BL BALL, TUMBLED
15	2	V10357	1" NPT ENDPLATE, MACHINED
16	1	V20353C	1 1/8" CAPLUG



THIS DRAWING AND ALL INFORMATION CONTAINED THEREON ARE THE EXCLUSIVE PROPERTY OF BANJO CORPORATION.

UNLESS SPECIFICALLY NOTED, THIS DRAWING AND ITEMS SHOWN ON THIS DRAWING ARE SUBJECT TO CHANGE AT ANY TIME.

BANJO CORPORATION
 A UNIT OF IDEX CORPORATION
 150 BANJO DRIVE, CRAWFORDSVILLE, IN 47933
 WEB SITE: WWW.BANJOCORP.COM
 E-MAIL: BANJOSALES@IDEXCORP.COM

DESCRIPTION:
1" BOTTOM LOAD VALVE ASSEMBLY, FKM

PART NUMBER:
V100BL

8

7

6

5

4

3

2

1