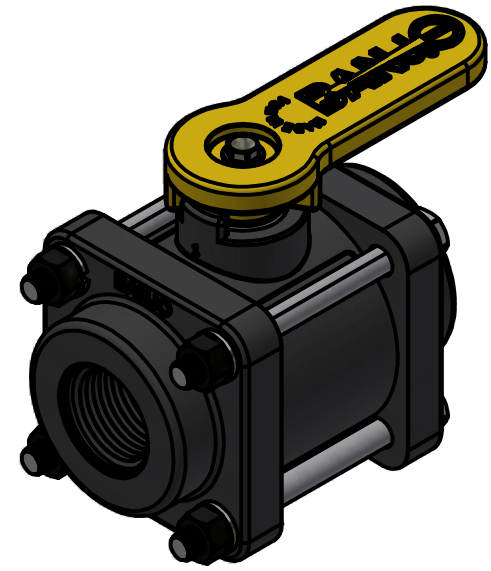
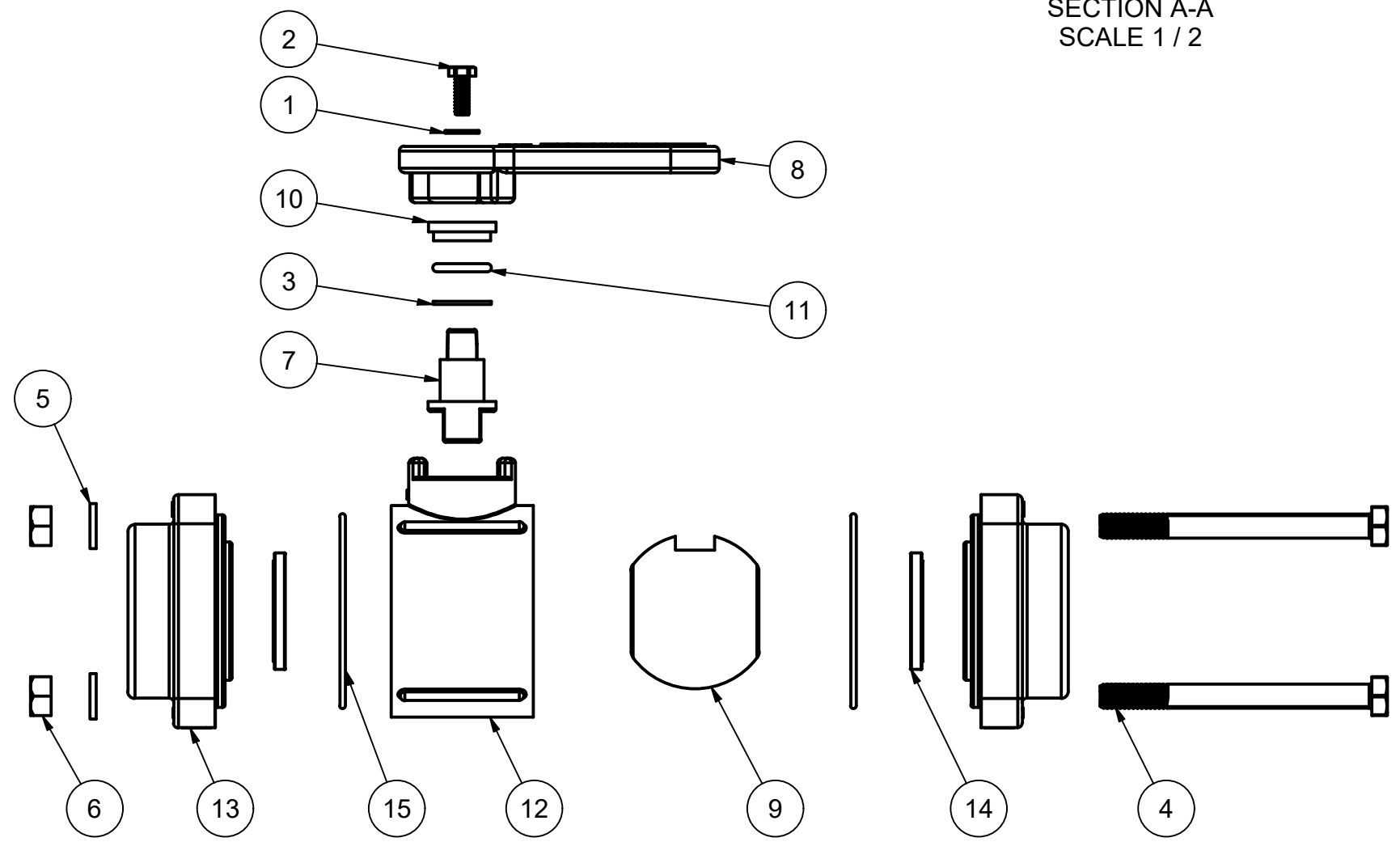


| PARTS LIST |     |             |                                |
|------------|-----|-------------|--------------------------------|
| ITEM       | QTY | PART NUMBER | DESCRIPTION                    |
| 1          | 1   | SW10        | #10 WASHER                     |
| 2          | 1   | V07020      | #10-24x0.50 HHCS 18-8SS        |
| 3          | 1   | V10060      | THRUST BEARING                 |
| 4          | 4   | V10117      | 5/16 - 18 X 3 1/2" HHCS        |
| 5          | 4   | V10118      | 5/16" LOCKWASHER               |
| 6          | 4   | V10119      | 5/16"-18 SS NUT                |
| 7          | 1   | V10151      | 1" VALVE STEM W/ INSERT        |
| 8          | 1   | V10153A     | 1/2" TO 1-1/4" VALVE HANDLE    |
| 9          | 1   | V10155      | VALVE BALL 1" FP, TUMBLED      |
| 10         | 1   | V10159      | UPPER-LOWER STEM BUSHING, PTFE |
| 11         | 1   | V10163      | AS568A -113 O-RING, FKM, BROWN |
| 12         | 1   | V10254      | 1" VALVE BODY                  |
| 13         | 2   | V10257B     | 1" BSPC FP ENDPLATE, MACHINED  |
| 14         | 2   | V10258A     | 1" BALL VALVE SEAT, STYLE A    |
| 15         | 2   | V10264      | AS568A -036 O-RING, FKM, BROWN |

SECTION A-A  
SCALE 1 / 2



THIS DRAWING AND ALL INFORMATION CONTAINED THEREON ARE THE EXCLUSIVE PROPERTY OF BANJO CORPORATION.

UNLESS SPECIFICALLY NOTED, THIS DRAWING AND ITEMS SHOWN ON THIS DRAWING ARE SUBJECT TO CHANGE AT ANY TIME.

**BANJO CORPORATION**  
A UNIT OF IDEX CORPORATION  
150 BANJO DRIVE, CRAWFORDSVILLE, IN 47933  
WEB SITE: WWW.BANJOCORP.COM  
E-MAIL: BANJOSALES@IDEXCORP.COM

|   |                                |
|---|--------------------------------|
| DESCRIPTION:<br><b>1" FP VALVE, BSP</b> | PART NUMBER:<br><b>V100FPB</b> |
|---|--------------------------------|