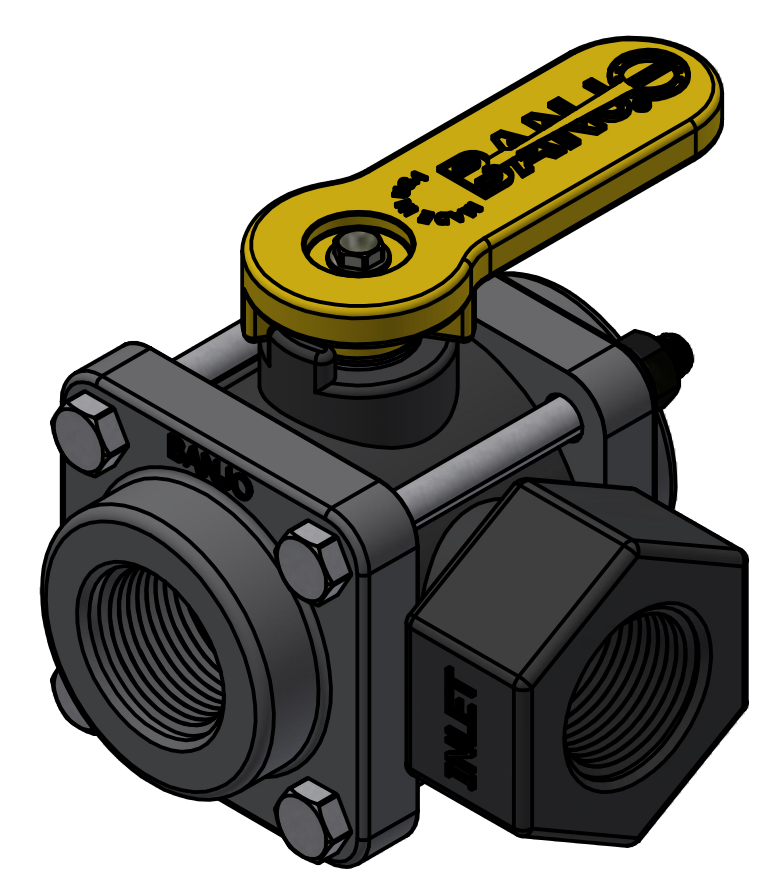
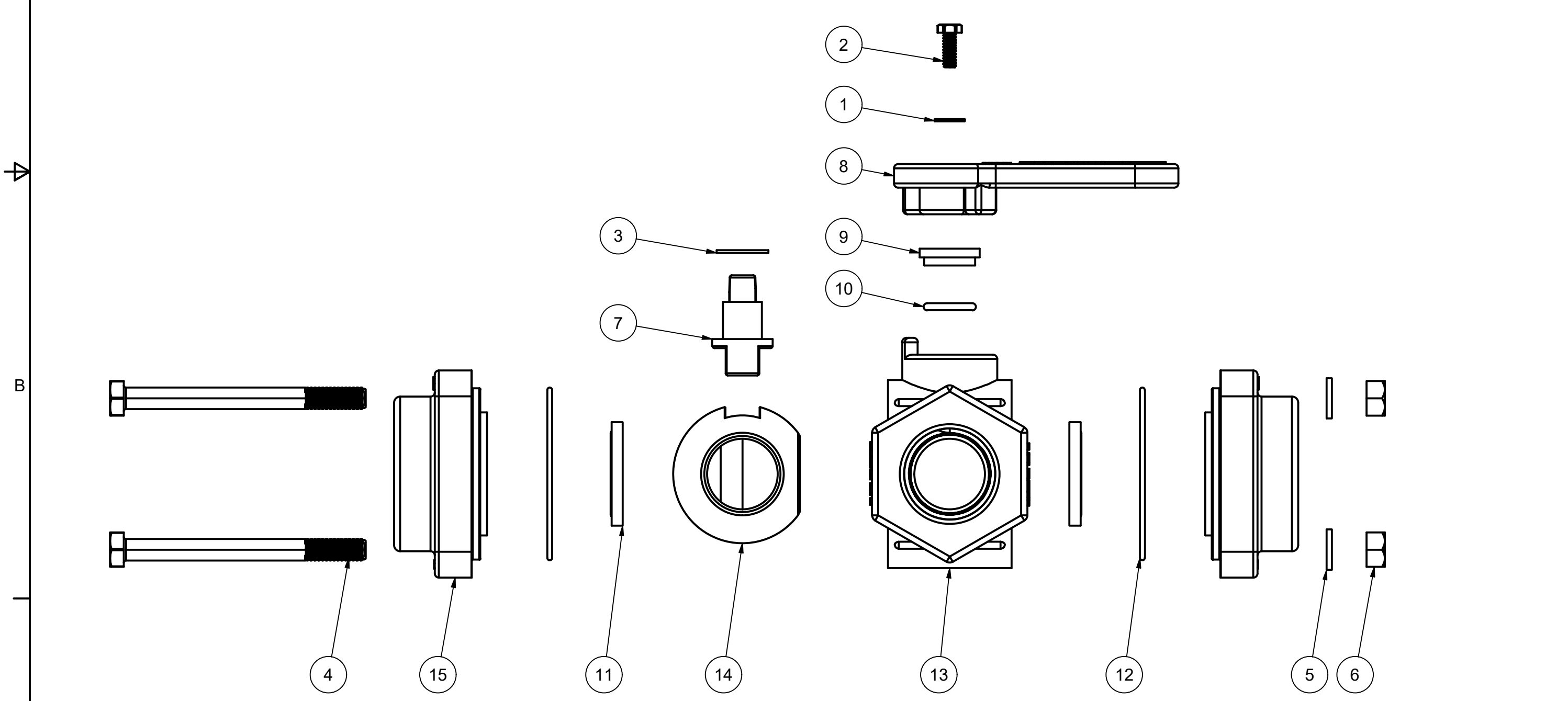


| | | PARTS LIST | |
|------|-----|-------------|----------------------------------|
| ITEM | QTY | PART NUMBER | DESCRIPTION |
| 1 | 1 | SW10 | #10 WASHER |
| 2 | 1 | V07020 | #10-24x0.50 HHCS 18-8SS |
| 3 | 1 | V10060 | THRUST BEARING |
| 4 | 4 | V10117 | 5/16 - 18 X 3 1/2" HHCS |
| 5 | 4 | V10118 | 5/16" LOCKWASHER |
| 6 | 4 | V10119 | 5/16"-18 SS NUT |
| 7 | 1 | V10151 | 1" VALVE STEM W/ INSERT |
| 8 | 1 | V10153A | 1/2" TO 1-1/4" VALVE HANDLE |
| 9 | 1 | V10159 | UPPER-LOWER STEM BUSHING, PTFE |
| 10 | 1 | V10163 | AS568A -113 O-RING, FKM, BROWN |
| 11 | 2 | V10258 | 1" BALL VALVE SEAT |
| 12 | 2 | V10264 | AS568A -036 O-RING, FKM, BROWN |
| 13 | 1 | V10354S | 1" 3-WAY SL VALVE BODY, MACHINED |
| 14 | 1 | V10355S | 1" SIDE LOAD BALL, TUMBLED |
| 15 | 2 | V10357 | 1" NPT ENDPLATE, MACHINED |



THIS DRAWING AND ALL INFORMATION CONTAINED THEREON ARE THE EXCLUSIVE PROPERTY OF BANJO CORPORATION.

UNLESS SPECIFICALLY NOTED, THIS DRAWING AND ITEMS SHOWN ON THIS DRAWING ARE SUBJECT TO CHANGE AT ANY TIME.

BANJO CORPORATION
 A UNIT OF IDEX CORPORATION
 150 BANJO DRIVE, CRAWFORDSVILLE, IN 47933
 WEB SITE: WWW.BANJOCORP.COM
 E-MAIL: BANJOSALES@IDEXCORP.COM

DESCRIPTION:
1" SIDE LOAD 3-WAY VALVE ASSEMBLY

PART NUMBER:
V100SL