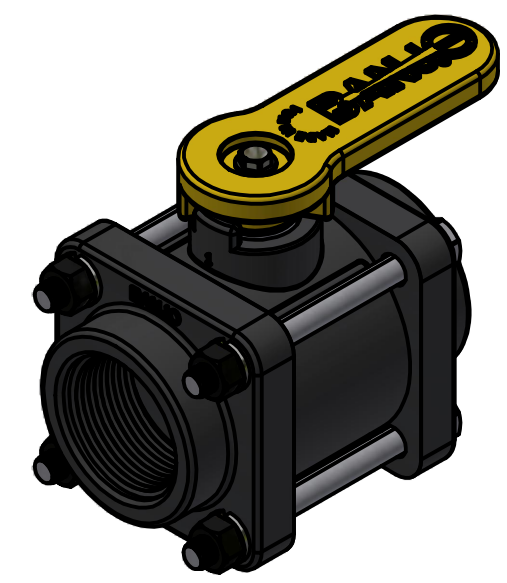
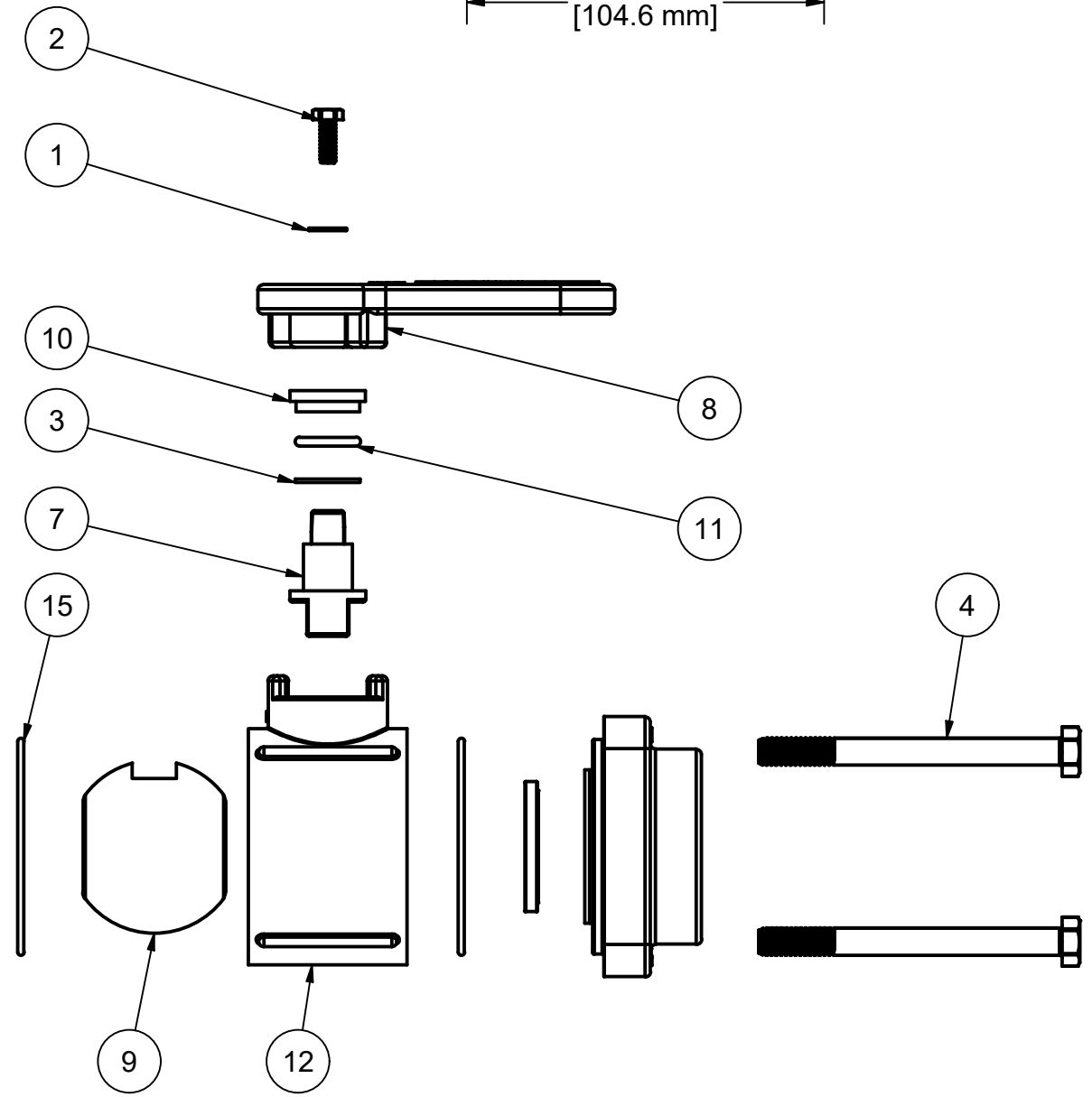



PARTS LIST			
ITEM	QTY	PART NUMBER	DESCRIPTION
1	1	SW10	#10 WASHER
2	1	V07020	#10-24x0.50 HHCS 18-8SS
3	1	V10060	THRUST BEARING
4	4	V10117	5/16 - 18 X 3 1/2" HHCS
5	4	V10118	5/16" LOCKWASHER
6	4	V10119	5/16"-18 SS NUT
7	1	V10151	1" VALVE STEM W/ INSERT
8	1	V10153A	1/2" TO 1-1/4" VALVE HANDLE
9	1	V10155	VALVE BALL 1" FP, TUMBLED
10	1	V10159	UPPER-LOWER STEM BUSHING, PTFE
11	1	V10163	AS568A -113 O-RING, FKM, BROWN
12	1	V10254	1" VALVE BODY
13	2	V10256	1-1/4" ENDPLATE, MACHINED
14	2	V10258A	1" BALL VALVE SEAT, STYLE A
15	2	V10264	AS568A -036 O-RING, FKM, BROWN



THIS DRAWING AND ALL INFORMATION CONTAINED THEREON ARE THE EXCLUSIVE PROPERTY OF BANJO CORPORATION.

UNLESS SPECIFICALLY NOTED, THIS DRAWING AND ITEMS SHOWN ON THIS DRAWING ARE SUBJECT TO CHANGE AT ANY TIME.



BANJO CORPORATION
 A UNIT OF IDEX CORPORATION
 150 BANJO DRIVE, CRAWFORDSVILLE, IN 47933
 WEB SITE: WWW.BANJOCORP.COM
 E-MAIL: BANJOSALES@IDEXCORP.COM

DESCRIPTION: 1-1/4" FPT X PORT POLY VALVE	PART NUMBER: V125
---	-----------------------------