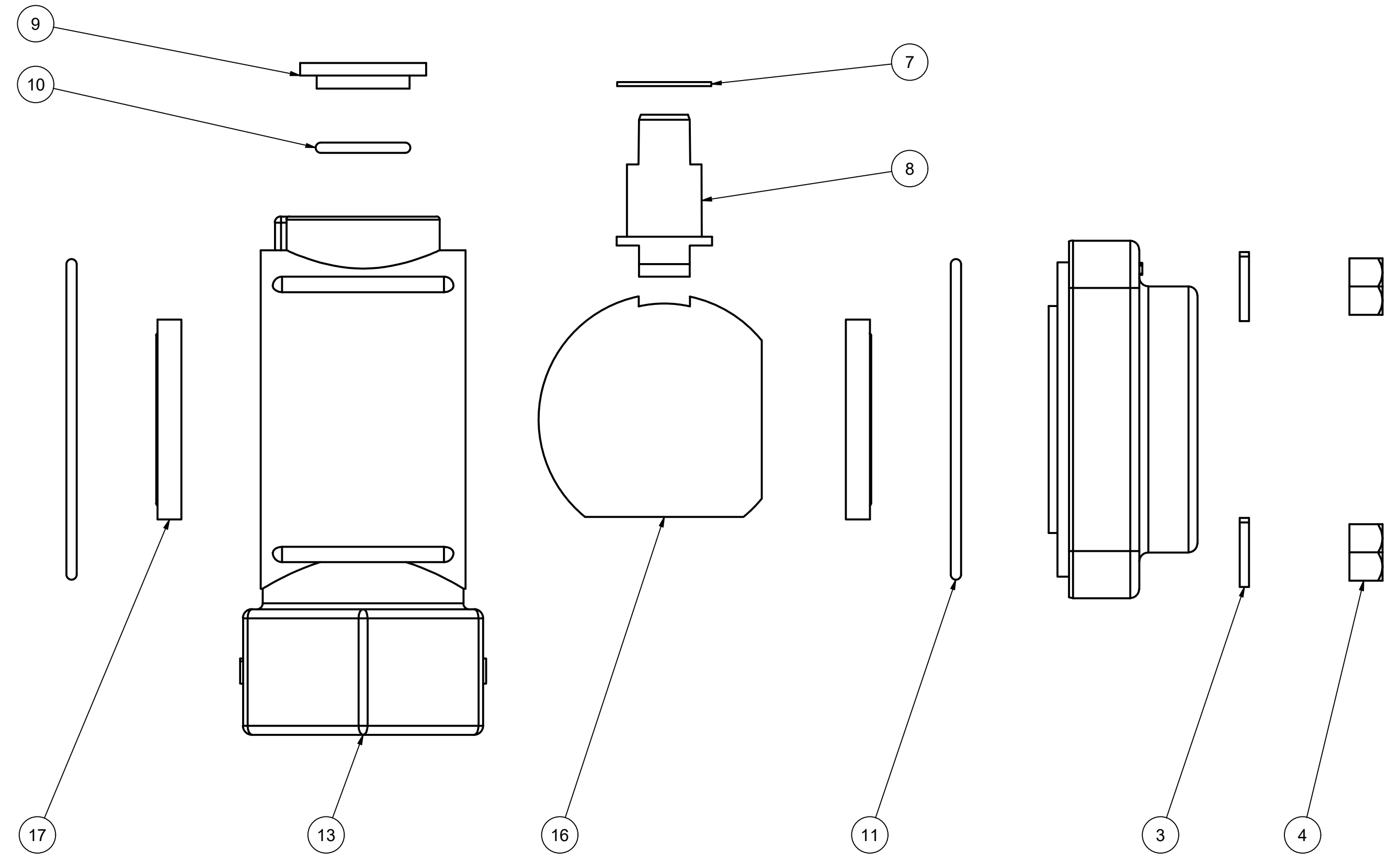
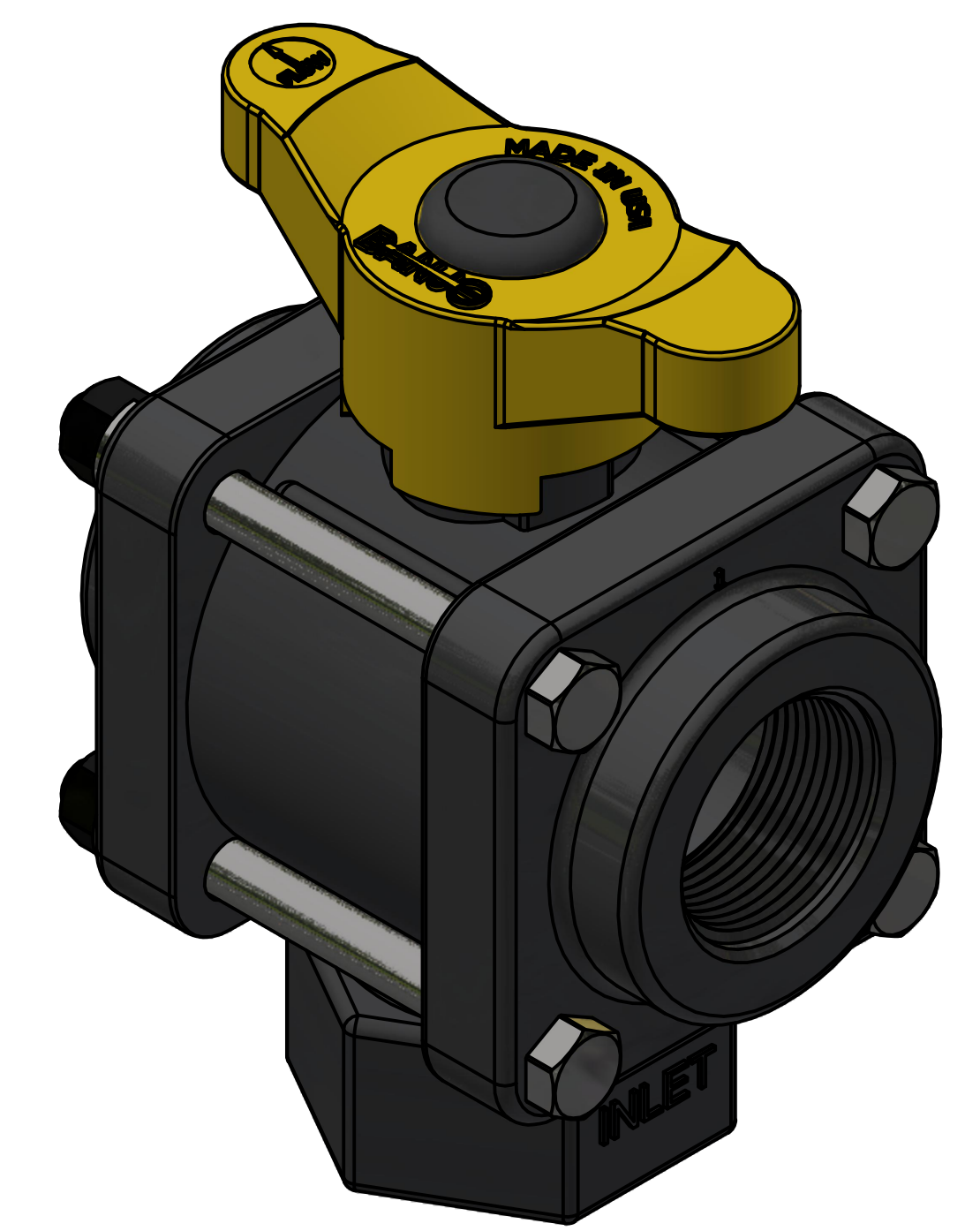


SECTION A-A  
SCALE 1 : 1



PARTS LIST			
ITEM	QTY	PART NUMBER	DESCRIPTION
1	1 (NS)	050DECAL	Banjo Logo Decal
2	4	V20017	3/8-16 X 4" HHCS
3	4	V20018	3/8" LOCKWASHER
4	4	V20019	3/8-16 HEX NUT
5	1	V20020	2" handle Bolt
6	1	V20021	Handle Washer
7	1	V20060	VALVE STEM THRUST BEARING
8	1	V20151M	BALL STEM FOR 1-1/2" & 2" VALVE
9	1	V20159	2" STEM BUSHING
10	1	V20163	AS568A -116 O-RING, FKM, BROWN
11	2	V20264	AS568A -151 O-RING, FKM, BROWN
12	2	V20267	1 1/4" NPT ENDPLATE, MACHINED
13	1	V20344B	1 1/4" NPT BL VALVE BODY, MACHINED
14	1	V20353C	1 1/8" CAPLUG
15	1	V20353TB	2" BOTTOM LOAD T-HANDLE
16	1	V20355B	2" 3-WAY BL BALL, TUMBLED
17	2	VE20258A	2" VE Seat TFM
18	1 (NS)	VL1018	300 PSI DECAL



THIS DRAWING AND ALL INFORMATION CONTAINED THEREON ARE THE EXCLUSIVE PROPERTY OF BANJO CORPORATION.

UNLESS SPECIFICALLY NOTED, THIS DRAWING AND ITEMS SHOWN ON THIS DRAWING ARE SUBJECT TO CHANGE AT ANY TIME.

BANJO CORPORATION  
150 BANJO DRIVE, CRAWFORDSVILLE, IN 47933  
WEB SITE: WWW.BANJO.CORP.COM  
E-MAIL: BANJOSALES@IDEXCORP.COM

DESCRIPTION  
1 1/4" BOTTOM LOAD 3-WAY VALVE

PART NUMBER  
V125BL