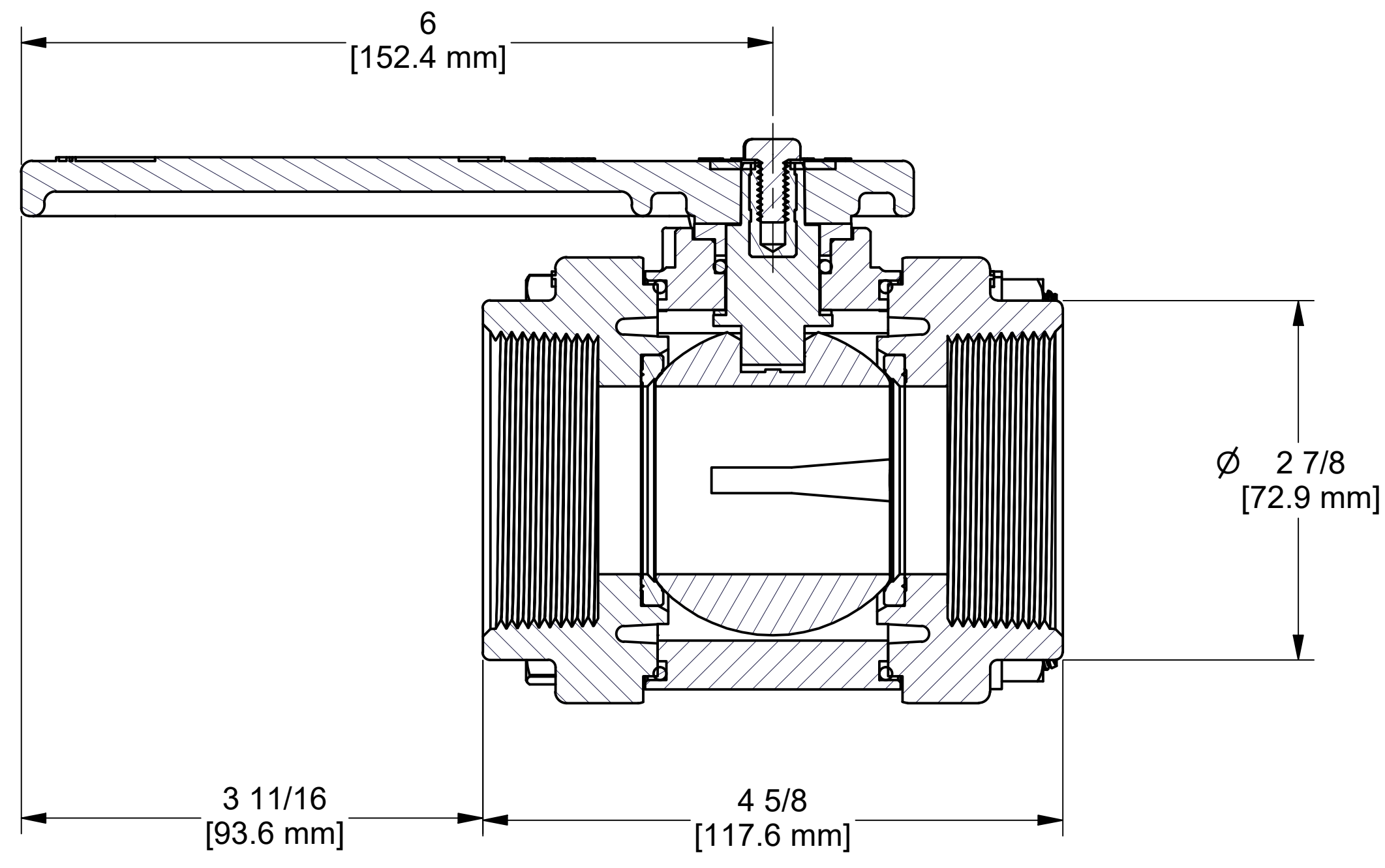
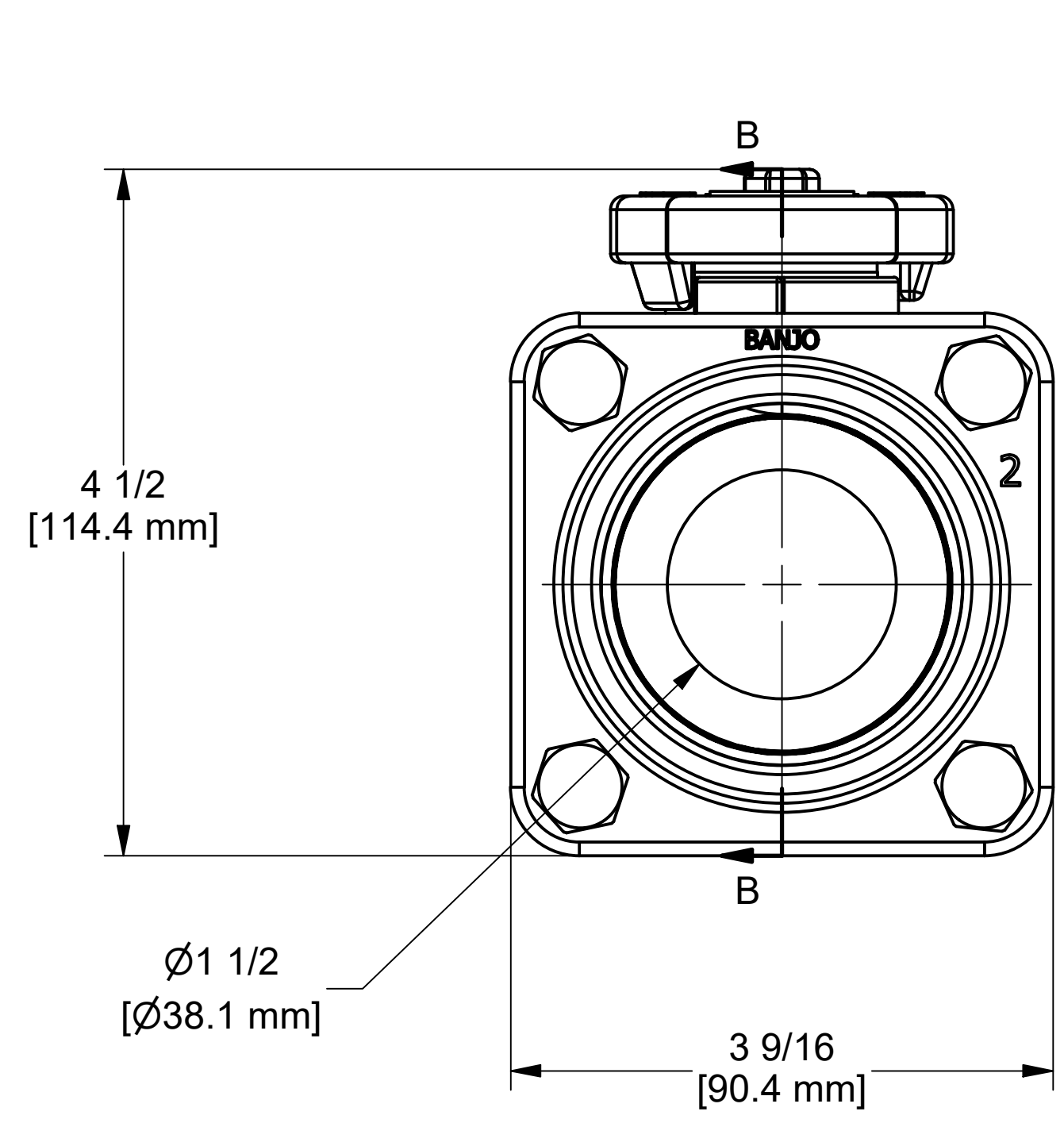
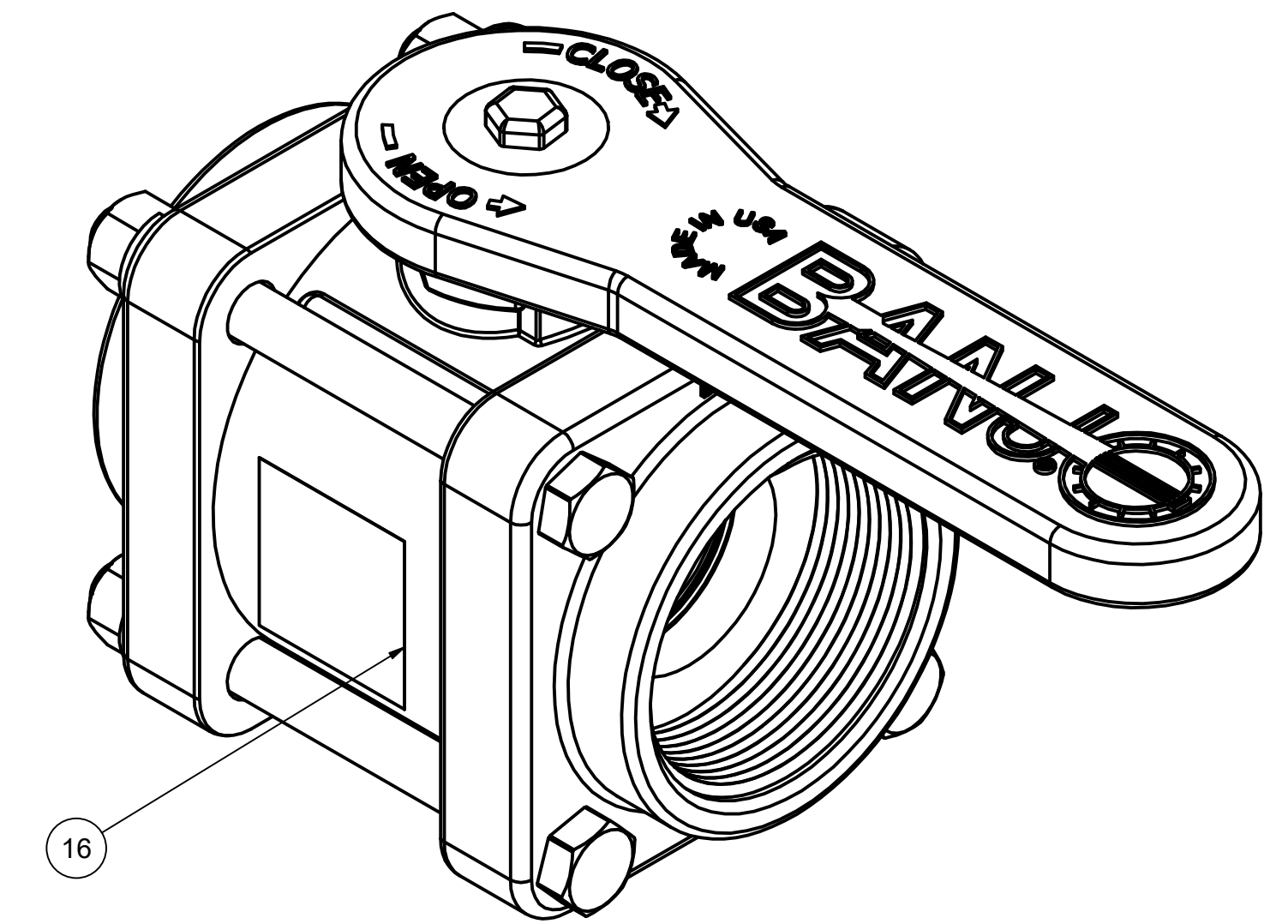


Parts List			
ITEM	QTY	PART NUMBER	DESCRIPTION
1	4	V20017	3/8-16 X 4" HHCS
2	4	V20018	3/8" LOCKWASHER
3	4	V20019	3/8-16 HEX NUT
4	1	V20020	2" handle Bolt
5	1	V20021	Handle Washer
6	1	V20060	VALVE STEM THRUST BEARING
7	1	V20151M	VALVE STEM
8	1	V20153	1-1/2" & 2" VALVE HANDLE
9	1	V20159	2" STEM BUSHING
10	1	V20163	AS568A -116 O-RING, FKM, BROWN
11	1	V20254	2" VALVE BODY
12	1	V20255A	2" Valve Ball
13	2	V20256	2" NPT ENDPLATE, MACHINED
14	2	V20258A	2" Valve Seat
15	2	V20264	AS568A -151 O-RING, FKM, BROWN
16	1	VL1001	150 PSI Pressure Label Viton Seals



SECTION B-B
SCALE 1 : 1

THIS DRAWING AND ALL INFORMATION CONTAINED THEREON ARE THE EXCLUSIVE PROPERTY OF BANJO CORPORATION.
UNLESS SPECIFICALLY NOTED, THIS DRAWING AND ITEMS SHOWN ON THIS DRAWING ARE SUBJECT TO CHANGE AT ANY TIME.

BANJO CORPORATION
150 BANJO DRIVE, CRAWFORDSVILLE, IN 47933
WEB SITE: WWW.BANJO.CORP.COM
E-MAIL: BANJOSALES@DEXCORP.COM

DESCRIPTION
2" FPT X 1-1/2" PORT POLY VLVE

PART NUMBER
V200