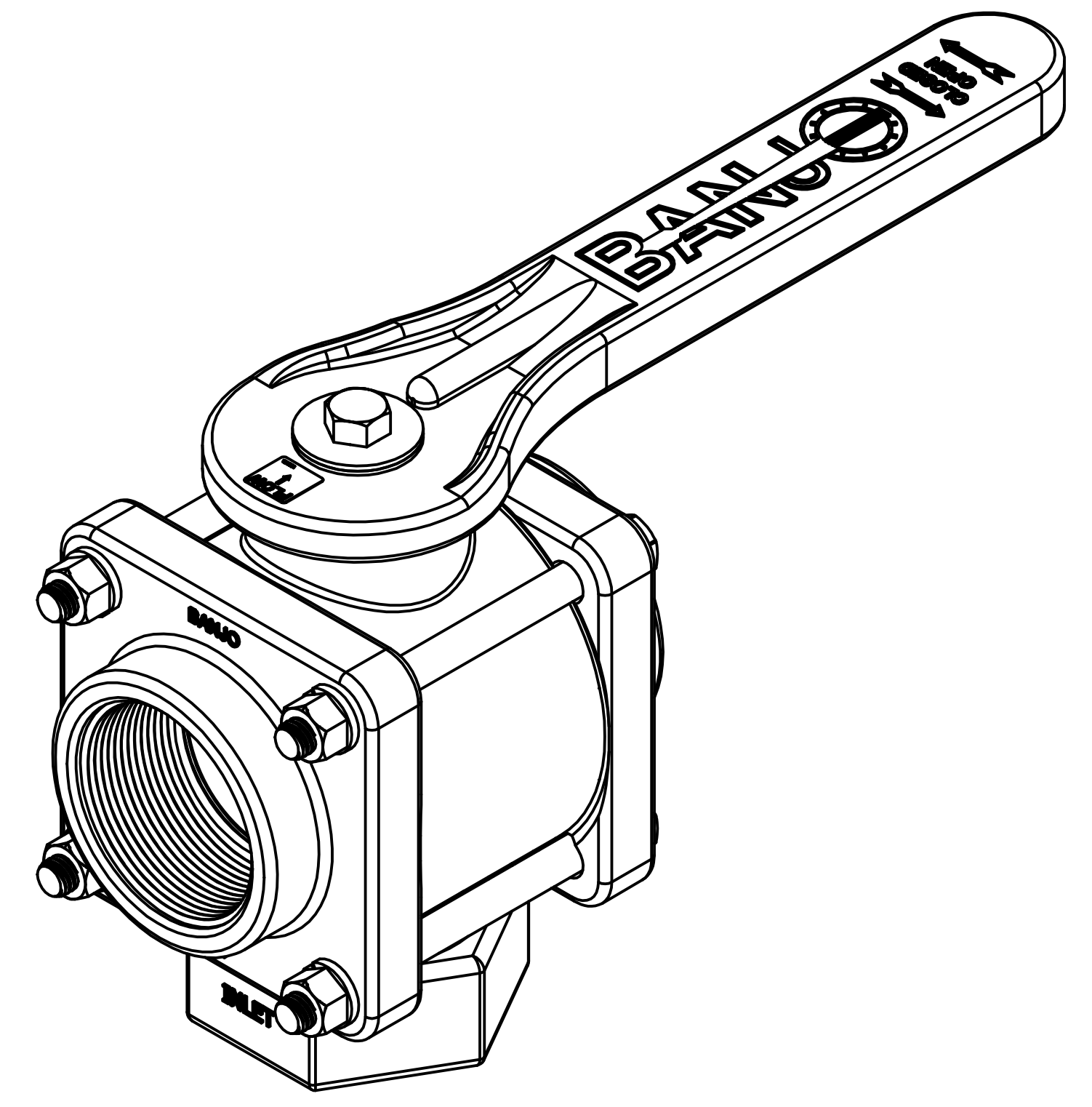
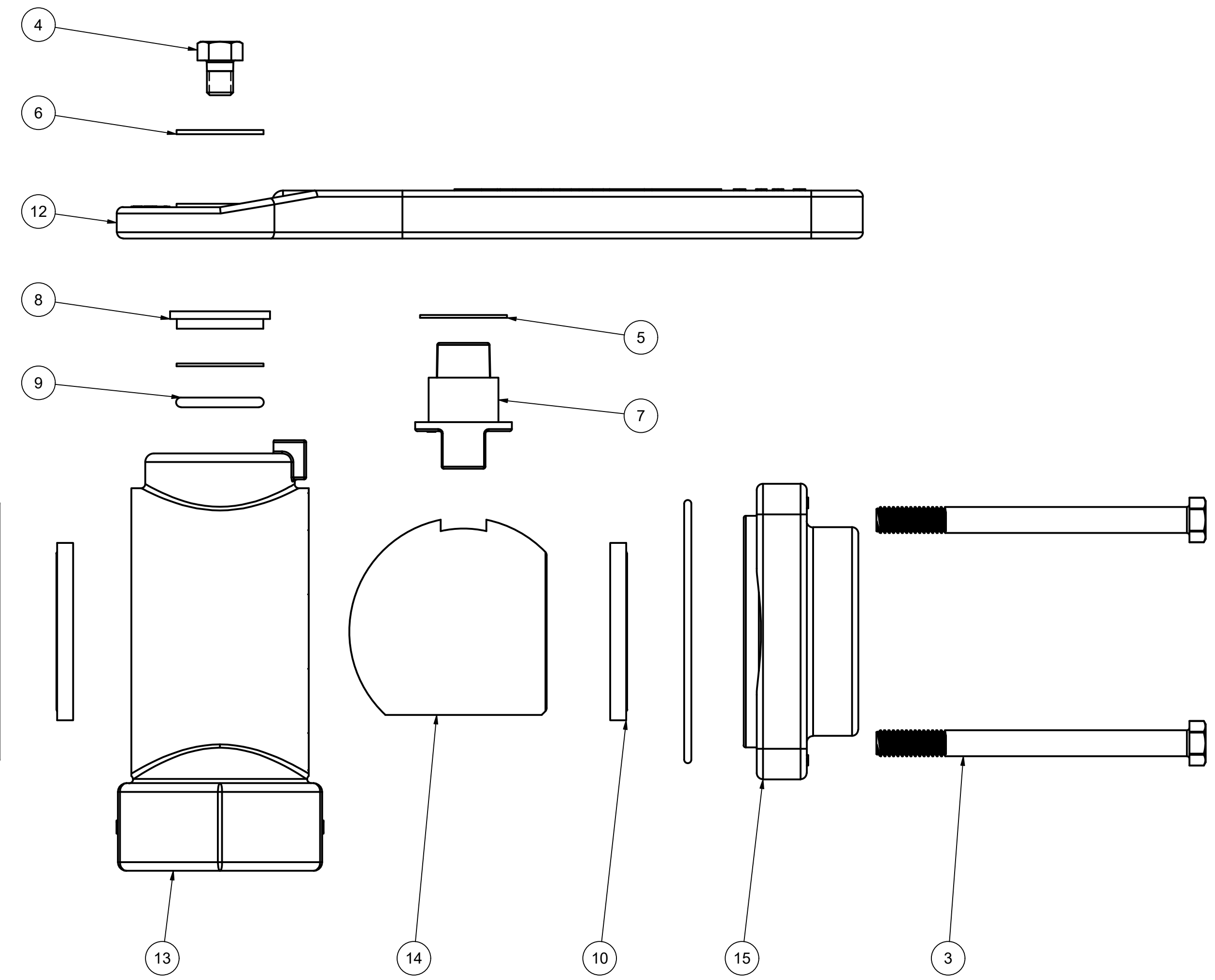


PARTS LIST				
ITEM	QTY	PART NUMBER	DESCRIPTION	
1	4	V20018	3/8" LOCKWASHER	
2	4	V20019	3/8-16 HEX NUT	
3	4	V25017	3/8-16 X 4 1/2" HHCS	
4	1	V25020	3/8" Handle Bolt	
5	2	V25060	VALVE STEM THRUST BEARING	
6	1	V25121	3/8" Fender Washer	
7	1	V25151B	STEM 2"FP & 3"FP, MACHINED	
8	1	V25160	Stem Bushing	
9	1	V25163	AS568A -214 O-RING, FKM, BROWN	
10	2	V25258	2" FP VALVE BALL SEAT	
11	2	V25264	CUSTOM O-RING, ID:3.575", CS: 0.103, FKM, BROWN	
12	1	V25353B	2" FP BL Handle	
13	1	V25354B	2" BL VALVE BODY	
14	1	V25355B	2" FP BL 3-WAY BALL, TUMBLED	
15	2	V25356	2" FP 3-WAY ENDPLATE	



THIS DRAWING AND ALL INFORMATION CONTAINED THEREON ARE THE EXCLUSIVE PROPERTY OF BANJO CORPORATION.

UNLESS SPECIFICALLY NOTED, THIS DRAWING AND ITEMS SHOWN ON THIS DRAWING ARE SUBJECT TO CHANGE AT ANY TIME.

**BANJO CORPORATION**  
 A UNIT OF IDEX CORPORATION  
 150 BANJO DRIVE, CRAWFORDSVILLE, IN 47933  
 WEB SITE: WWW.BANJOCORP.COM  
 E-MAIL: BANJOSALES@IDEXCORP.COM

DESCRIPTION:  
**2" BOTTOM LOAD VALVE**

PART NUMBER:  
**V200BL**