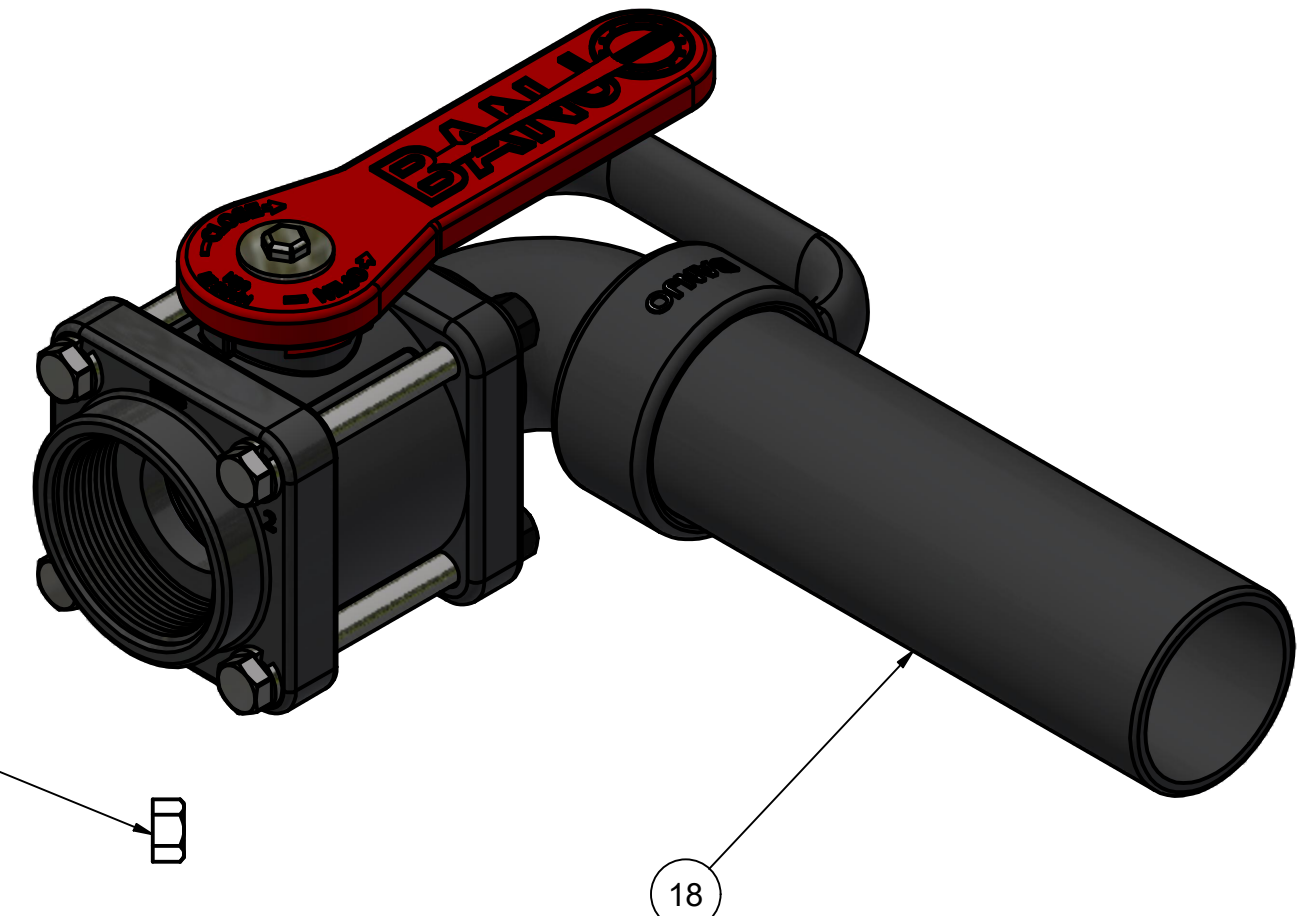
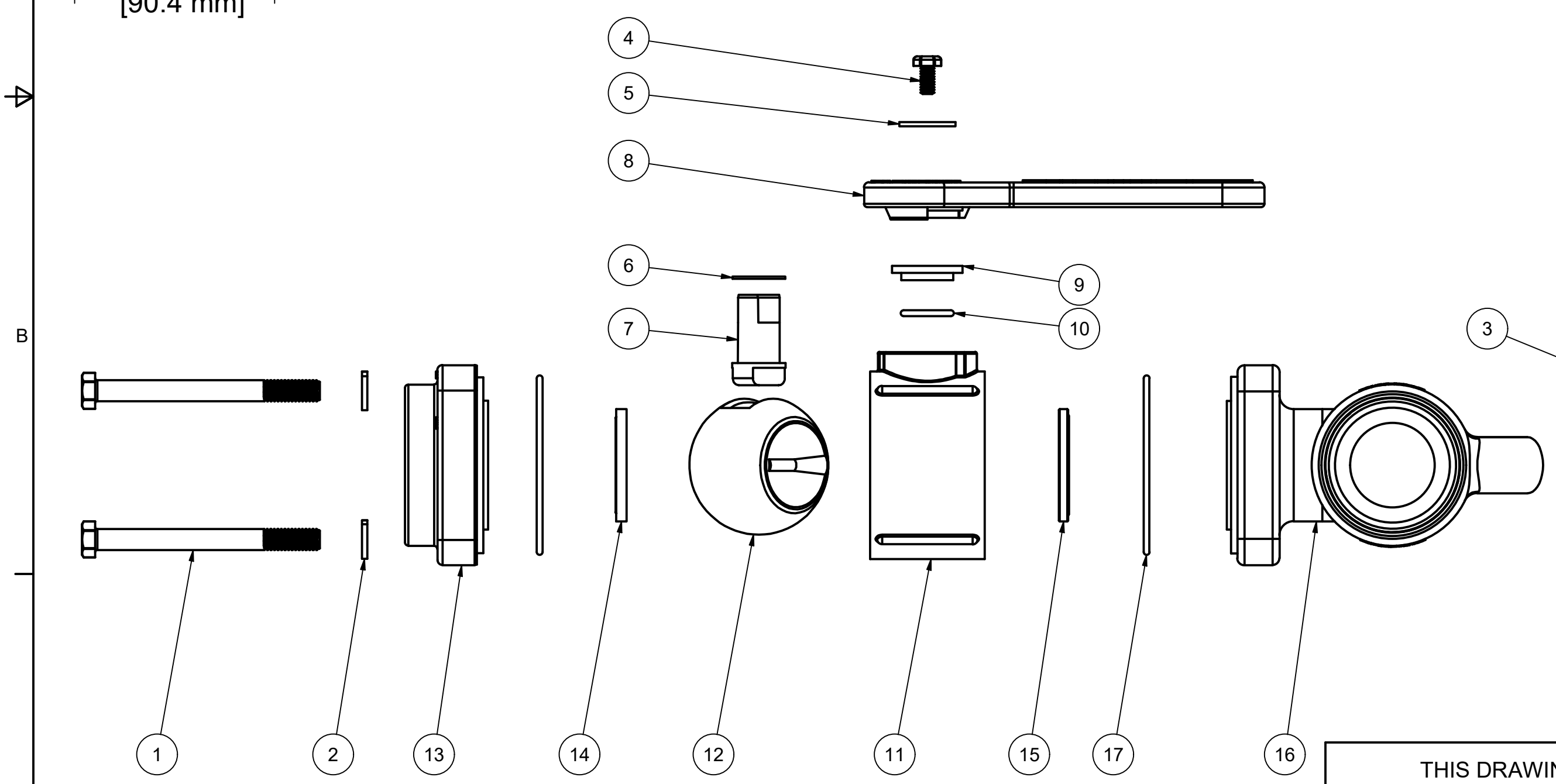



Parts List			
ITEM	QTY	PART NUMBER	DESCRIPTION
1	4	V20017	3/8-16 X 4" HHCS
2	4	V20018	3/8" LOCKWASHER
3	4	V20019	3/8-16 HEX NUT
4	1	V20020	2" handle Bolt
5	1	V20021	Handle Washer
6	1	V20060	VALVE STEM THRUST BEARING
7	1	V20151M	VALVE STEM
8	1	V20152	ANGLE HANDLE
9	1	V20159	2" STEM BUSHING
10	1	V20163	AS568A -116 O-RING, FKM, BROWN
11	1	V20254	2" VALVE BODY
12	1	V20255A	2" Valve Ball
13	1	V20256	2" NPT ENDPLATE, MACHINED
14	1	V20258	2" VALVE BALL SEAT
15	1	V20258A	2" Valve Seat
16	1	V20261	2" ANGLE FLANGE END PLATE
17	2	V20264	AS568A -151 O-RING, FKM, BROWN
18	1	V25165	2" NPT X 8" NOZZLE PIPE





BANJO CORPORATION

BANJO CORPORATION
 150 BANJO DRIVE, CRAWFORDSVILLE, IN 47933
 WEB SITE: WWW.BANJOCORP.COM
 E-MAIL: BANJOSALES@IDEXCORP.COM

<p>THIS DRAWING AND ALL INFORMATION CONTAINED THEREON ARE THE EXCLUSIVE PROPERTY OF BANJO CORPORATION.</p> <p>UNLESS SPECIFICALLY NOTED, THIS DRAWING AND ITEMS SHOWN ON THIS DRAWING ARE SUBJECT TO CHANGE AT ANY TIME.</p>	<p>DESCRIPTION</p> <p style="text-align: center; font-size: 1.2em;">2" FPT, 1-1/2" PORT</p> <p>PART NUMBER</p> <p style="text-align: center; font-size: 1.2em;">VA200</p>
--	---

4 3 2 1