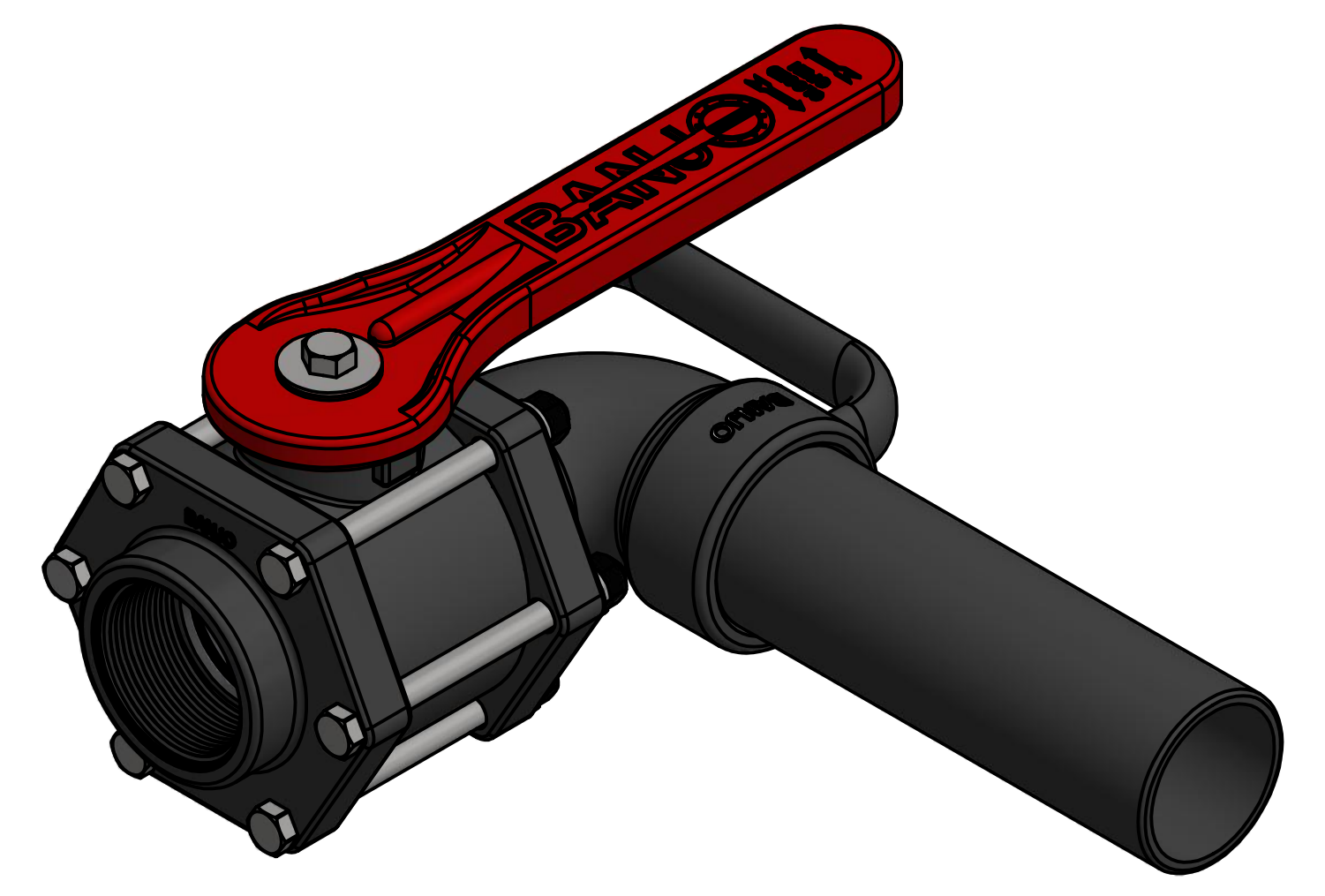
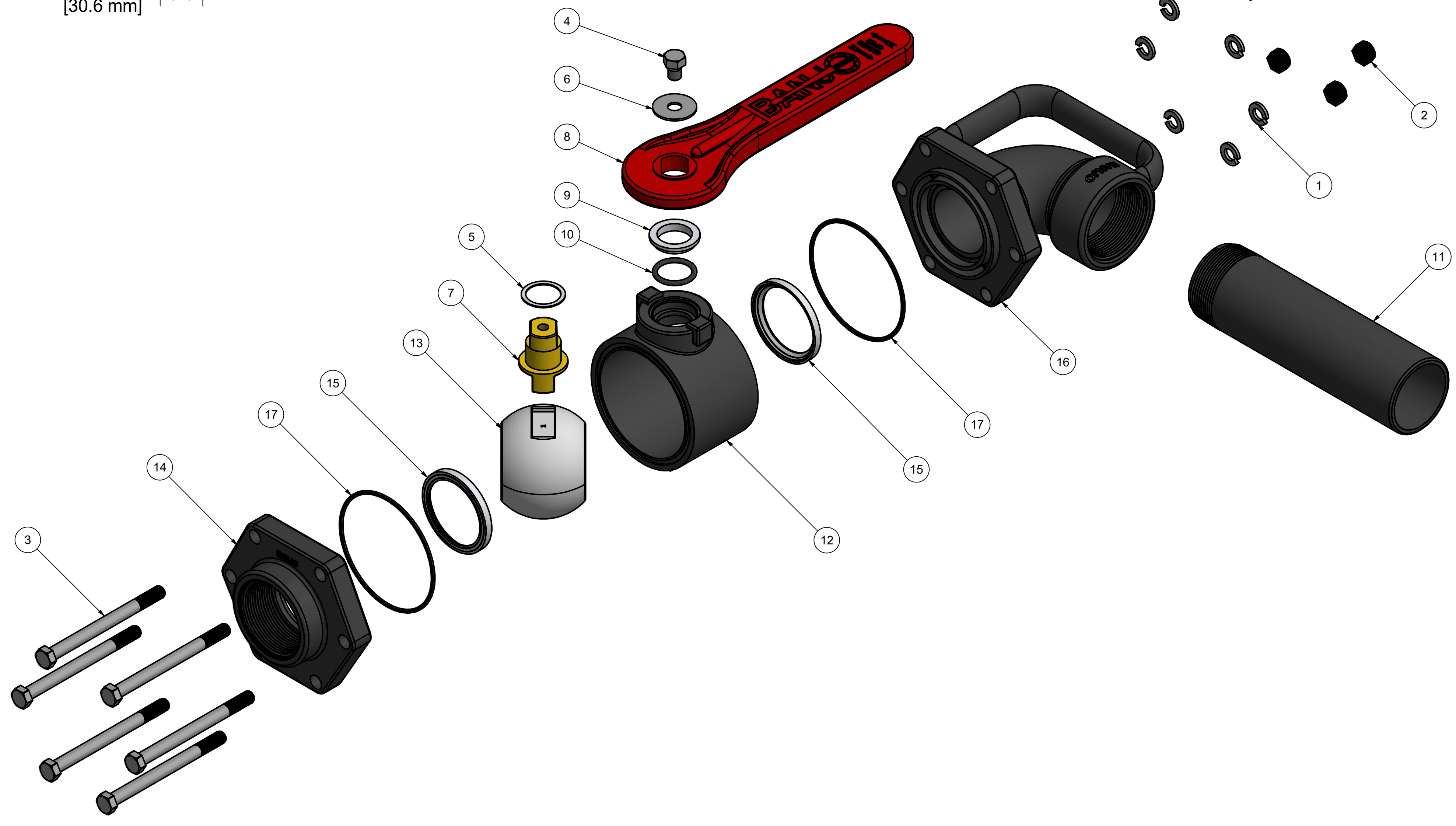


PARTS LIST			
ITEM	QTY	PART NUMBER	DESCRIPTION
1	6	V20018	3/8" LOCKWASHER
2	6	V20019	3/8" HEX NUT
3	6	V25017	3/8-16 X 4 1/2" HHCS
4	1	V25020	3/8" Handle Bolt
5	1	V25060	VALVE STEM THRUST BEARING
6	1	V25121	3/8" Fender Washer
7	1	V25151B	STEM 2"FP & 3"FP, MACHINED
8	1	V25152	2" FP ANGLE HANDLE
9	1	V25160	Stem Bushing
10	1	V25163	#214 FKM O'RING
11	1	V25165	2" NPT X 8" NOZZLE PIPE
12	1	V25254	2" FP VALVE BODY
13	1	V25255A	2" FP VALVE BALL, TUMBLED
14	1	V25256B	2" BSPC FP ENDPLATE, MACHINED
15	2	V25258A	2" FP Valve Seat
16	1	V25261	2" FP ANGLE FLANGE ENDPLATE
17	2	V25264	O-RING, ID: 3.575", CS: 0.103, FKM
18	1	VL1001	LABEL (N/S)



THIS DRAWING AND ALL INFORMATION CONTAINED THEREON ARE THE EXCLUSIVE PROPERTY OF BANJO CORPORATION.

UNLESS SPECIFICALLY NOTED, THIS DRAWING AND ITEMS SHOWN ON THIS DRAWING ARE SUBJECT TO CHANGE AT ANY TIME.

BANJO CORPORATION
 150 BANJO DRIVE, CRAWFORDSVILLE, IN 47933
 WEB SITE: WWW.BANJO.CORP.COM
 E-MAIL: BANJOSALES@IDEXCORP.COM

DESCRIPTION
2" FULL PORT ANGLE VALVE BSP

PART NUMBER
VA200FPB