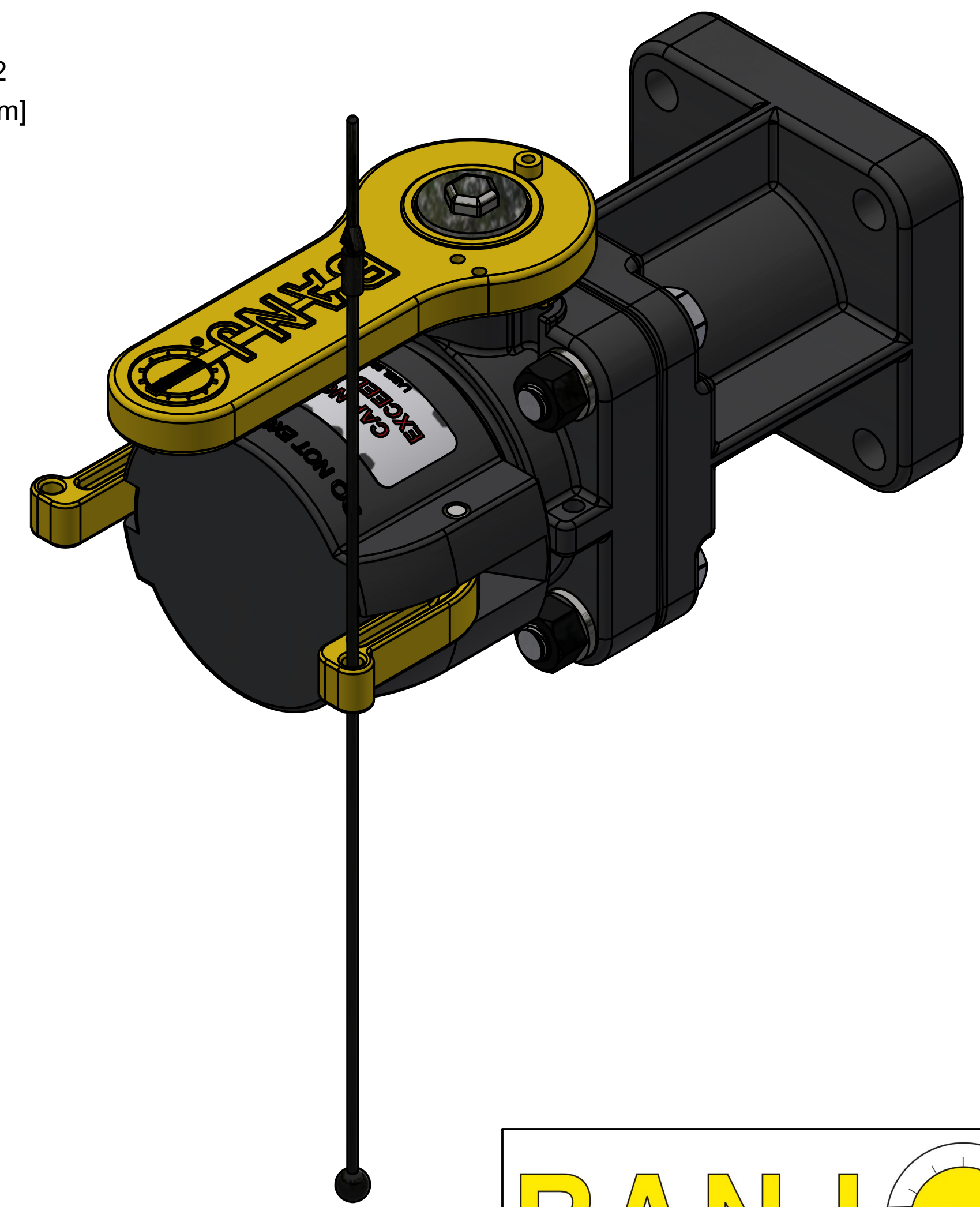
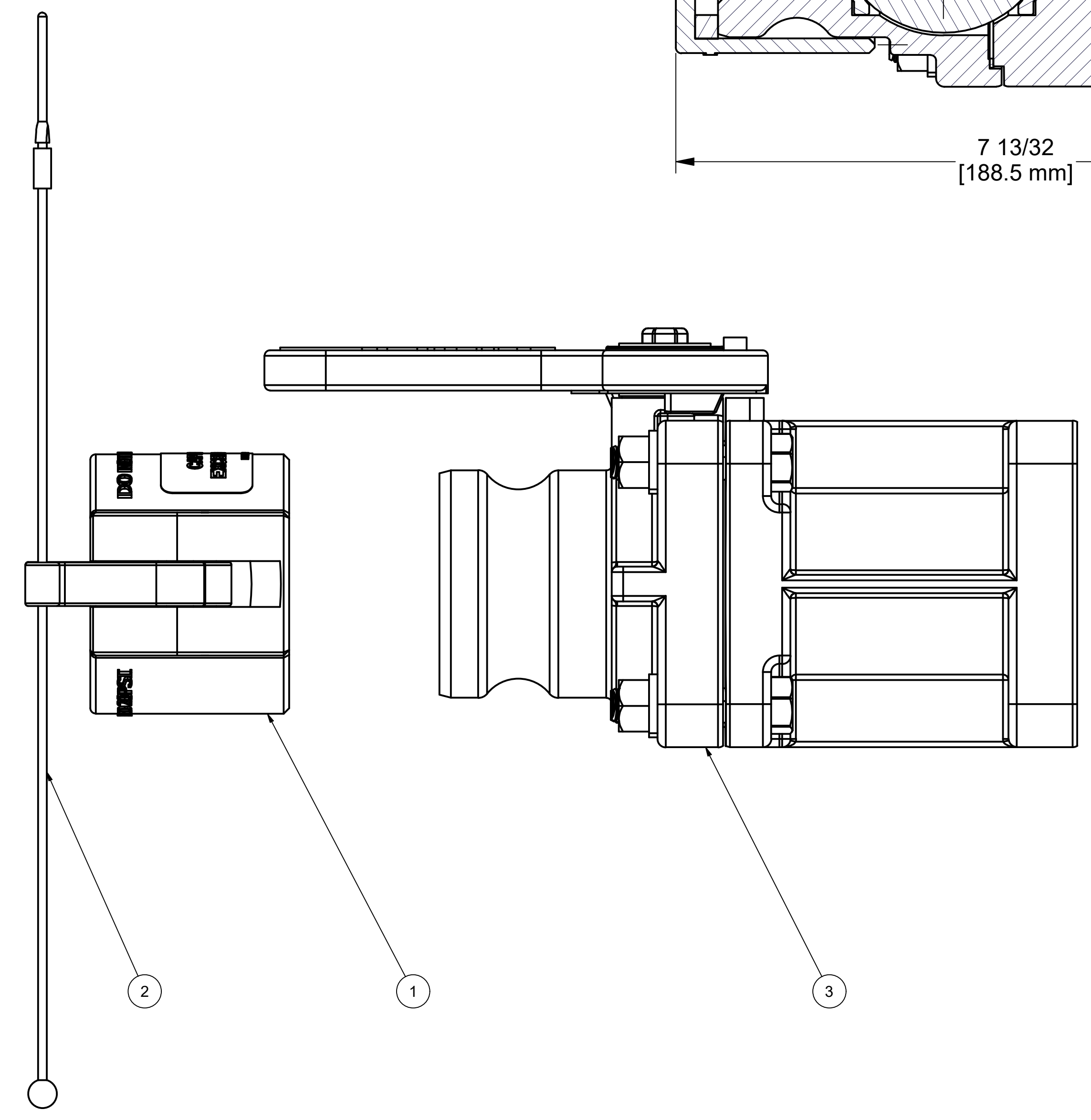
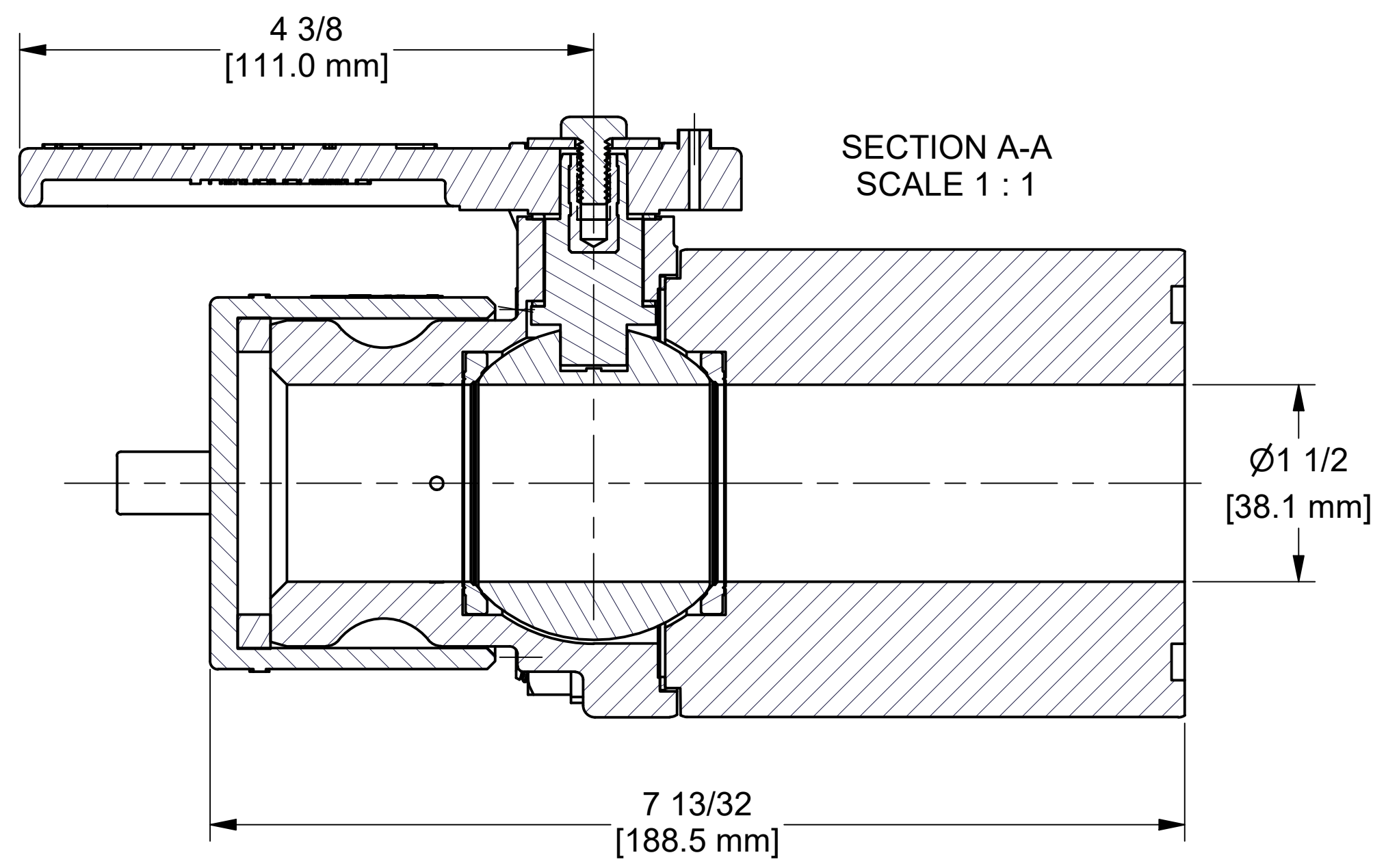
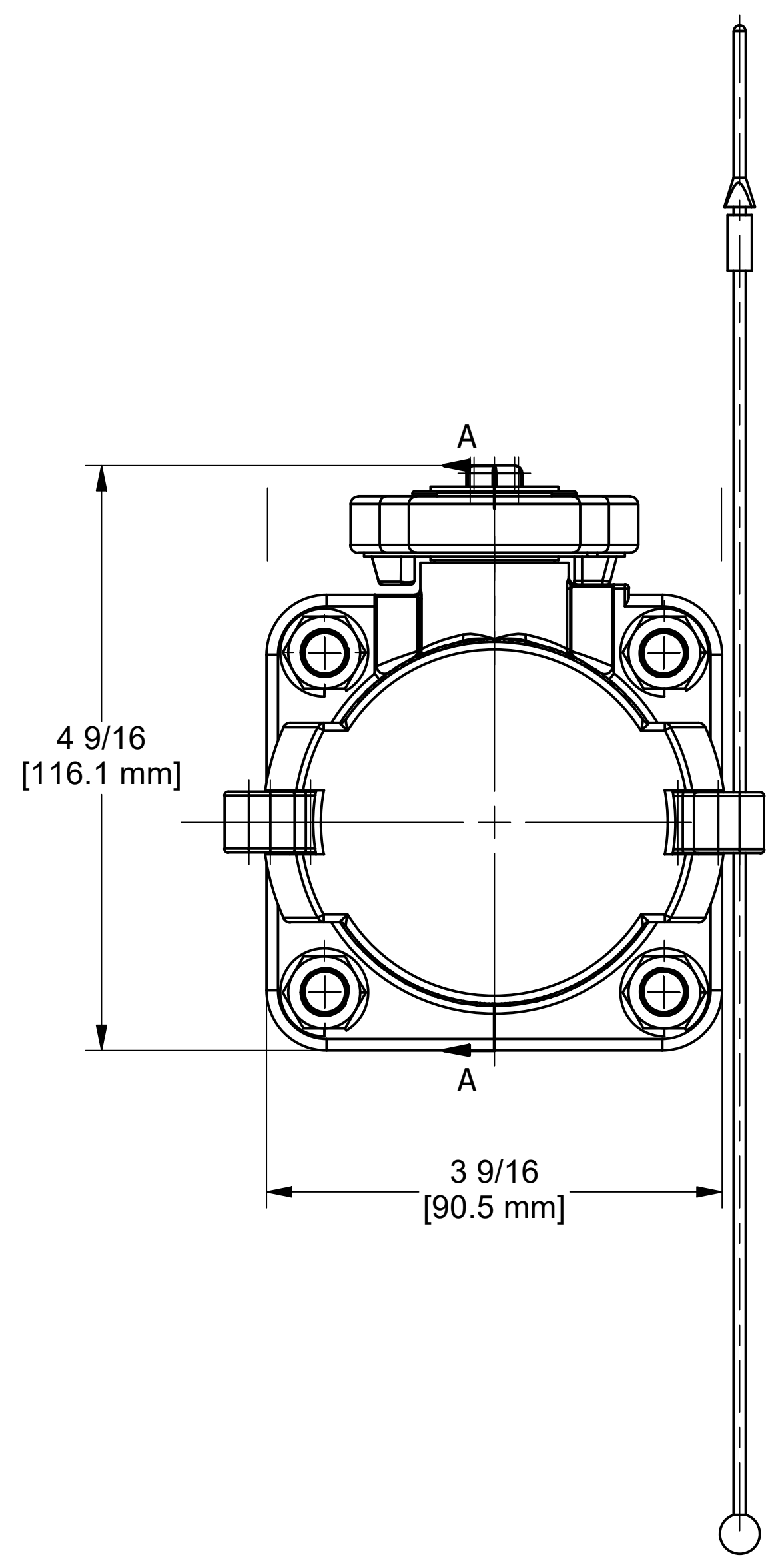


PARTS LIST			
ITEM	QTY	PART NUMBER	DESCRIPTION
1	1	202CAP	2" CAM LEVER CAP FOR IBC VALVES
2	1	V20207	POLYURETHANE LANYARD
3	1	VSFTF202	2"STUBBY-MLE ADAPTER-NEW STYLE

NOTE:

FOR GASKET BETWEEN TANK & VALVE USE VTF200GT



THIS DRAWING AND ALL INFORMATION CONTAINED THEREON ARE THE EXCLUSIVE PROPERTY OF BANJO CORPORATION.
UNLESS SPECIFICALLY NOTED, THIS DRAWING AND ITEMS SHOWN ON THIS DRAWING ARE SUBJECT TO CHANGE AT ANY TIME.

BANJO CORPORATION
A UNIT OF IDEX CORPORATION
150 BANJO DRIVE, CRAWFORDSVILLE, IN 47933
WEB SITE: WWW.BANJOCORP.COM
E-MAIL: BANJOSALES@IDEXCORP.COM

DESCRIPTION:
2" QDC OUTLET x CUSTOM INLET w/ CAP

PART NUMBER:
VSFTF202A