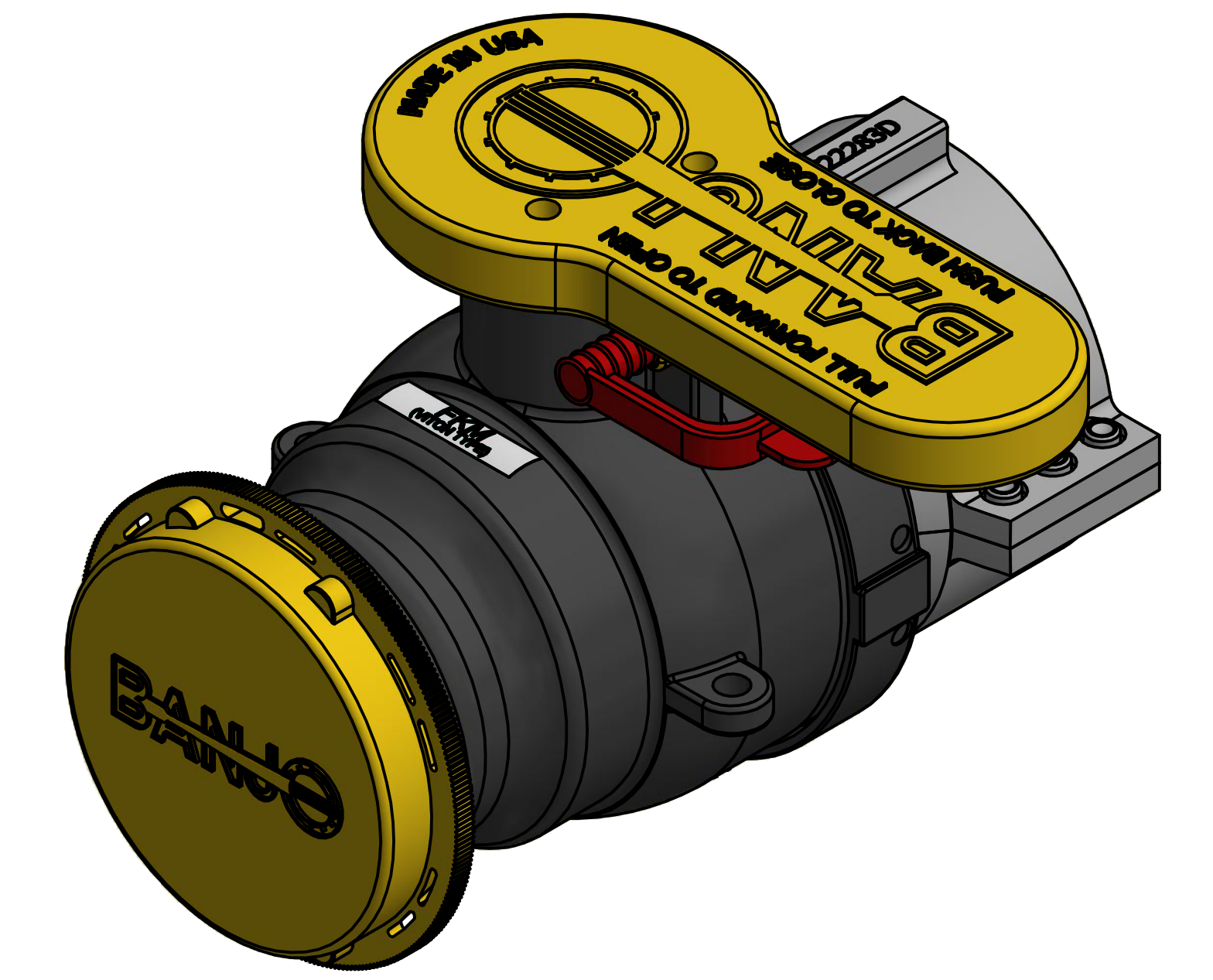
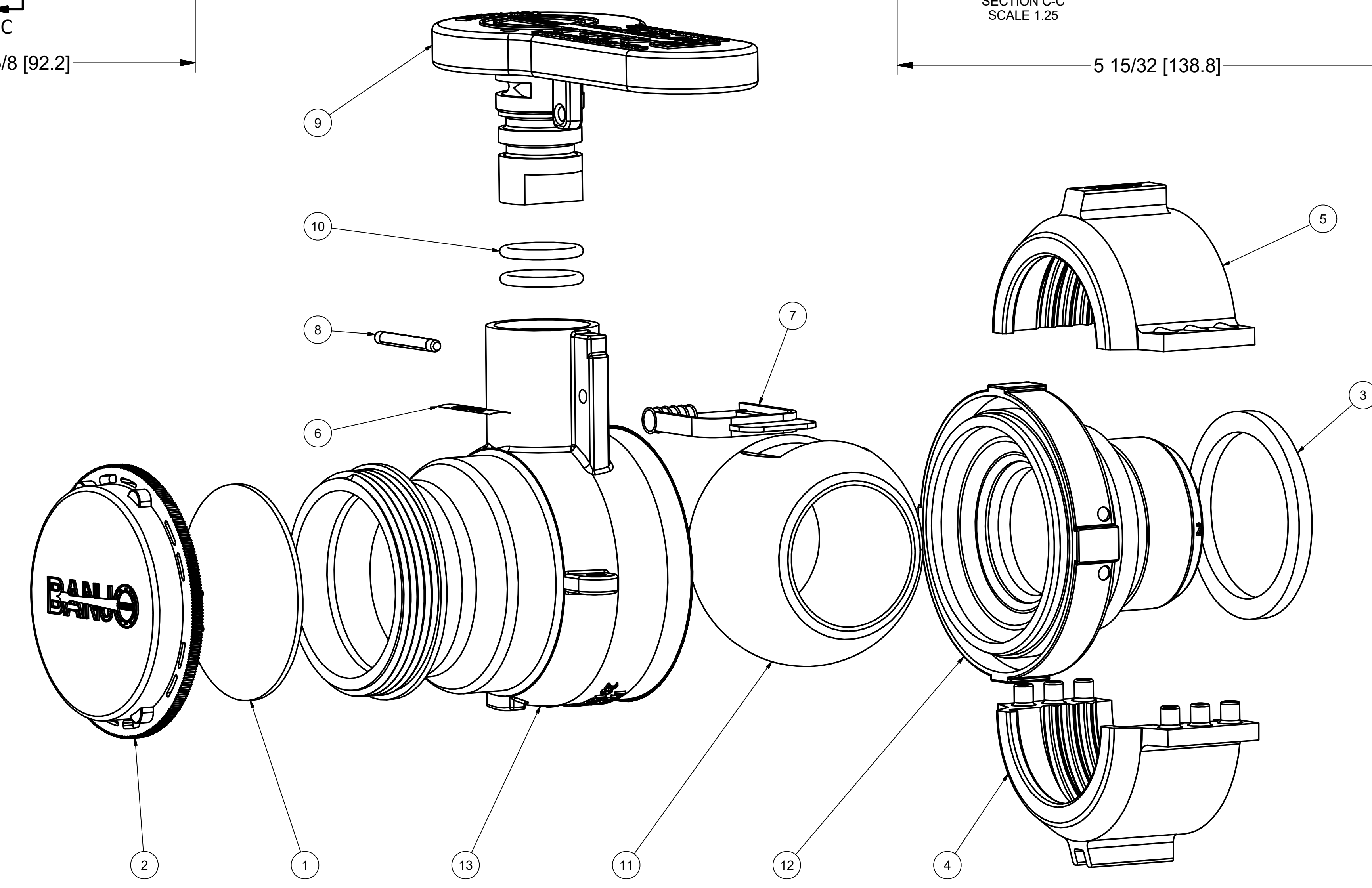



Parts List			
ITEM	QTY	PART NUMBER	DESCRIPTION
1	1	202FPTG	12A White Volara 2.28 x 1/16
2	1	211FPTX	2" NPT Yellow Cap
3	1	V22275GV	VALVE GASKET
4	1	V22283C	MALE COLLAR HALF
5	1	V22283D	FEMALE COLLAR HALF
6	1	VL1005	FKM LABEL
7	1	VS20209	SPRING-LOK SEAL
8	1	WS20002	Pin
9	1	WS20153	2" Handle for W Valve
10	2	WS20163	2-115 O-ring, FKM
11	1	WS20255T	2" TUMBLED VALVE BALL
12	1	WS22296	WELDED VALVE ENDPLATE
13	1	WSF20264	2" QDC WELD BODY



Welded valve. Individual parts shown not available for purchase.

THIS DRAWING AND ALL INFORMATION CONTAINED THEREON ARE THE EXCLUSIVE PROPERTY OF BANJO CORPORATION.
UNLESS SPECIFICALLY NOTED, THIS DRAWING AND ITEMS SHOWN ON THIS DRAWING ARE SUBJECT TO CHANGE AT ANY TIME.



BANJO CORPORATION

BANJO CORPORATION
150 BANJO DRIVE, CRAWFORDSVILLE, IN 47933
WEB SITE: WWW.BANJO.CORP.COM
E-MAIL: BANJOSALES@DEXCORP.COM

DESCRIPTION
MAUSER 2"POLY VLV QD FKM WITH CAP

PART NUMBER
W230234