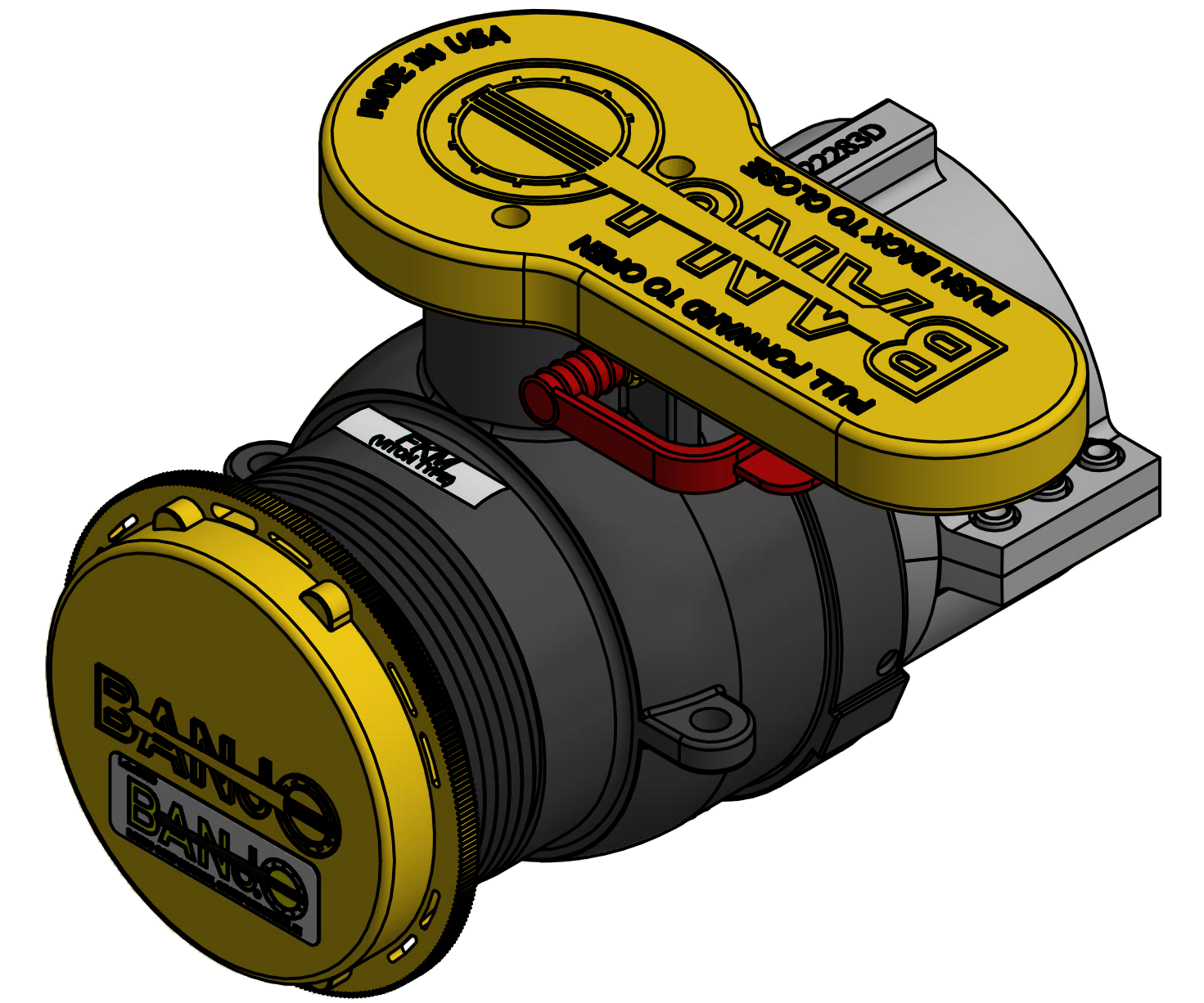
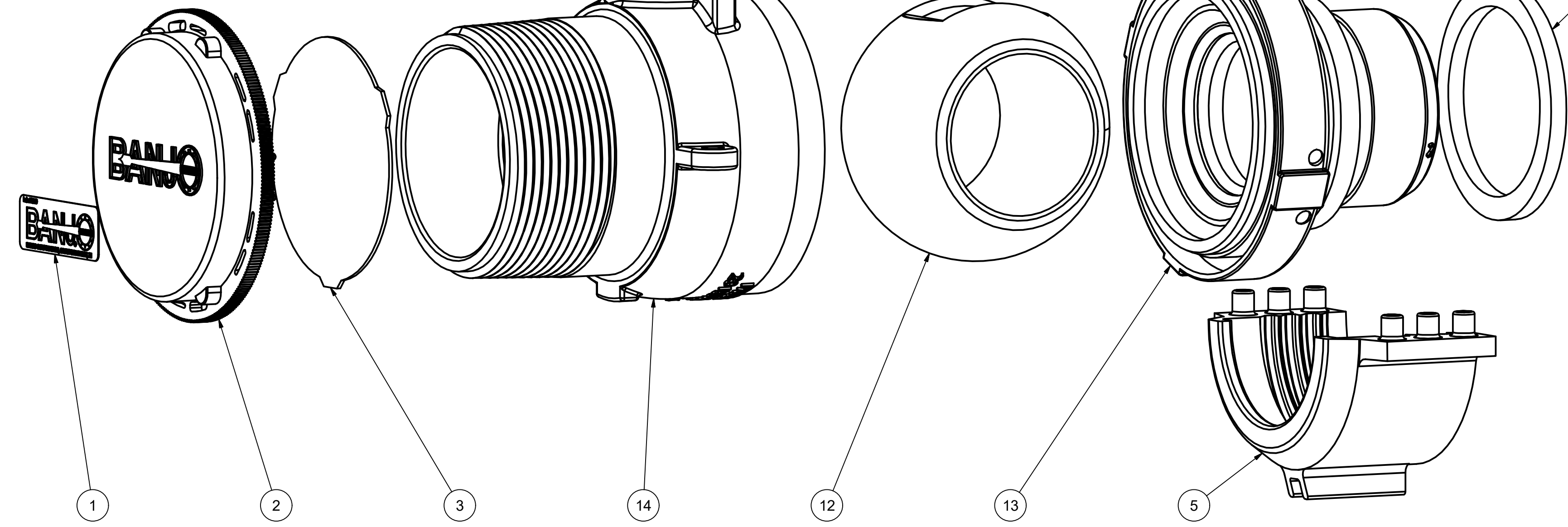


| Parts List |     |             |                                     |
|------------|-----|-------------|-------------------------------------|
| ITEM       | QTY | PART NUMBER | DESCRIPTION                         |
| 1          | 1   | 050DECAL    | Banjo Logo Decal                    |
| 2          | 1   | 211FPTX     | 2" NPT Yellow Cap                   |
| 3          | 1   | C25PFSLE113 | Foil Seal 0.035" C25 FSLE 1-13 59mm |
| 4          | 1   | V22275GV    | VALVE GASKET                        |
| 5          | 1   | V22283C     | MALE COLLAR HALF                    |
| 6          | 1   | V22283D     | FEMALE COLLAR HALF                  |
| 7          | 1   | VL1005      | FKM LABEL                           |
| 8          | 1   | VS20209     | SPRING-LOK SEAL                     |
| 9          | 1   | WS20002     | Pin                                 |
| 10         | 1   | WS20153     | 2" Handle for W Valve               |
| 11         | 2   | WS20163     | 2-115 O-ring, FKM                   |
| 12         | 1   | WS20255T    | 2" TUMBLED VALVE BALL               |
| 13         | 1   | WS22296     | WELDED VALVE ENDPLATE               |
| 14         | 1   | WSMT20254   | 2" NPT WELD BODY                    |



Welded valve. Individual parts shown not available for purchase.



THIS DRAWING AND ALL INFORMATION CONTAINED THEREON ARE THE EXCLUSIVE PROPERTY OF BANJO CORPORATION.  
UNLESS SPECIFICALLY NOTED, THIS DRAWING AND ITEMS SHOWN ON THIS DRAWING ARE SUBJECT TO CHANGE AT ANY TIME.

BANJO CORPORATION  
150 BANJO DRIVE, CRAWFORDSVILLE, IN 47933  
WEB SITE: WWW.BANJO.CORP.COM  
E-MAIL: BANJOSALES@DEXCORP.COM

DESCRIPTION  
**MAUSER 2"PLY VLV NPT FKM W/CAP FOIL**

PART NUMBER  
**W230237**