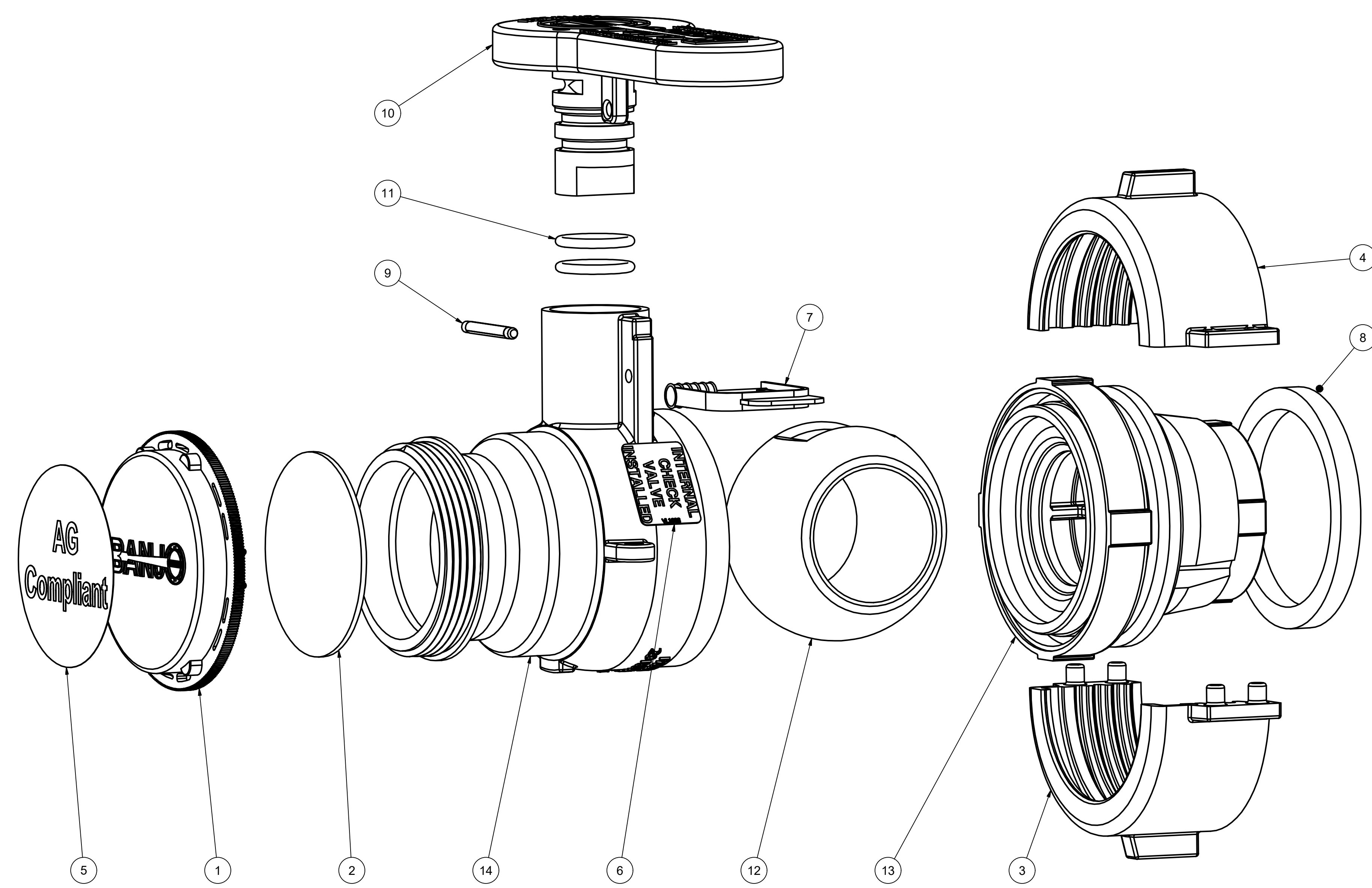


Parts List			
ITEM	QTY	PART NUMBER	DESCRIPTION
1	1	201FPTX	2" NPT BLACK Cap
2	1	202FPTG	12A White Volara 2.28 x 1/16
3	1	V20280A	RING HALF, MALE
4	1	V20280B	RING HALF, FEMALE
5	1	VL001FC	GREEN AG COMPLIANT LABEL
6	1	VL1008	Check Valve Equipped Decal
7	1	VS20209	SPRING-LOK SEAL
8	1	W20284GS	Gasket for V20280 Metal Connection Ring
9	1	WS20002	Pin
10	1	WS20153	2" Handle for W Valve
11	2	WS20163	2-115 O-ring, FKM
12	1	WS20255T	2" TUMBLED VALVE BALL
13	1	WS20284BC	W STUBBY 80 SERIES E/P ASSY
14	1	WSF20264	2" QDC WELD BODY



Welded valve. Individual parts shown not available for purchase.



THIS DRAWING AND ALL INFORMATION CONTAINED THEREON ARE THE EXCLUSIVE PROPERTY OF BANJO CORPORATION.  
UNLESS SPECIFICALLY NOTED, THIS DRAWING AND ITEMS SHOWN ON THIS DRAWING ARE SUBJECT TO CHANGE AT ANY TIME.

BANJO CORPORATION  
150 BANJO DRIVE, CRAWFORDSVILLE, IN 47933  
WEB SITE: WWW.BANJO.CORP.COM  
E-MAIL: BANJOSALES@DEXCORP.COM

DESCRIPTION  
**2"MLE QDC OUTLET X COLLAR BALL CHK**

PART NUMBER  
**WSFBC210**